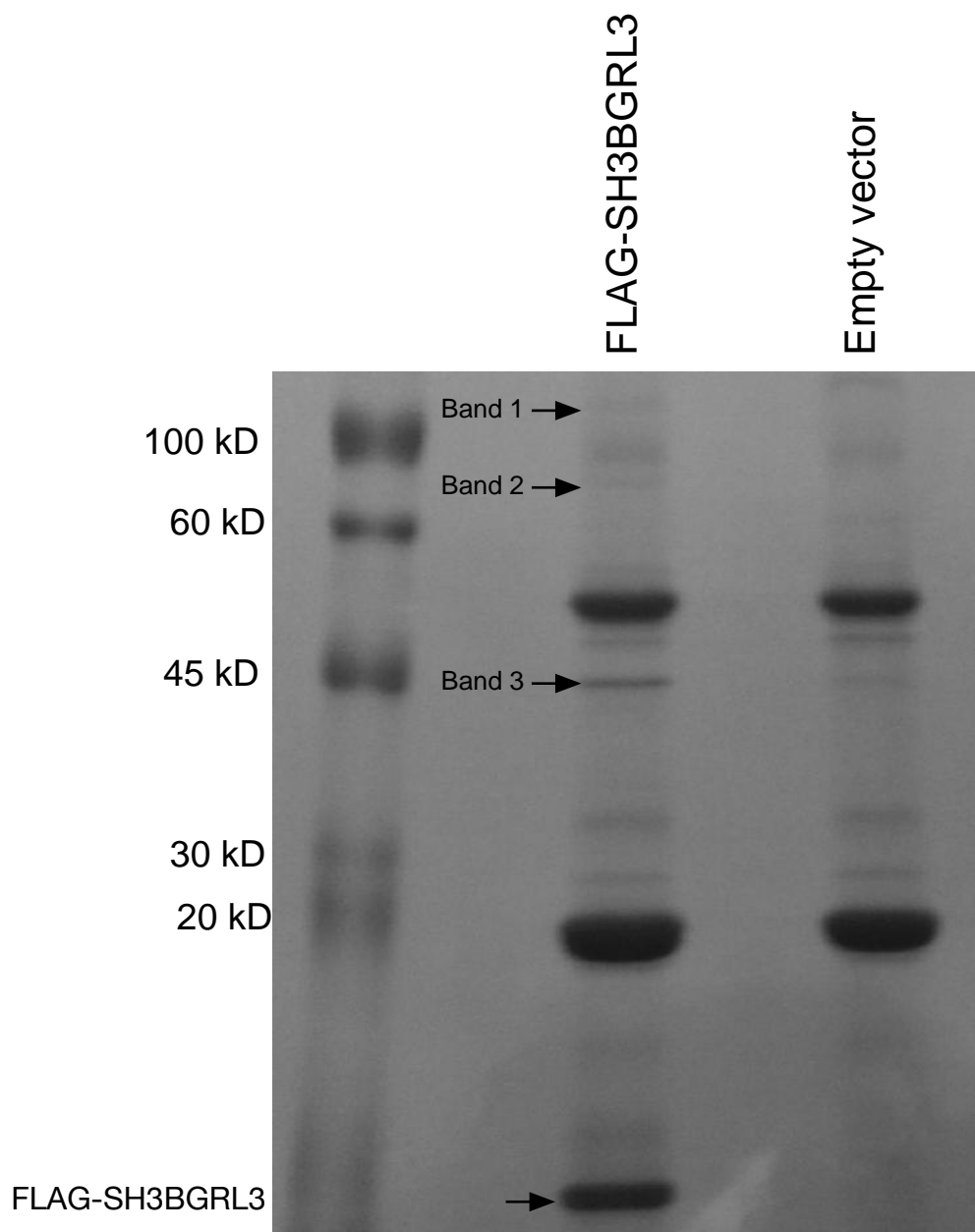


**SH3BGRL3 binds to Myosin 1c in a calcium dependent manner and modulates migration in the MDA-MB-231 cell line**

Filippo Di Pisa, Elisa Pesenti, Maria Bono, Andrea N Mazzarello, Cinzia Bernardi, Giovanni Renzone, Andrea Scaloni, Ermanno Ciccone, Franco Fais, Silvia Bruno, Paolo Scartezzini, Fabio Ghiotto



**Additional File 1. Co-immunoprecipitation with an anti-FLAG-coupled resin from lysates of SKBR3 cells transfected either with FLAG-SH3BGRL3 or with the empty vector. Three bands indicated with an arrow were cut and further subjected to proteomic analysis. Results are reported in Additional File 2.**