

A systematic review of the relationship between rigidity/flexibility and transdiagnostic cognitive and behavioral processes that maintain psychopathology

Journal of Experimental Psychopathology
July-September 2018: 1–40
© The Author(s) 2018
DOI: 10.1177/2043808718779431
journals.sagepub.com/home/epp



Lydia Morris and Warren Mansell

School of Health Sciences, University of Manchester, Manchester, UK

Abstract

An ever-growing number of transdiagnostic processes that maintain psychopathology across disorders have been identified. However, such processes are not consistently associated with psychological distress and symptoms. An understanding of what makes such processes pathological is required. One possibility is that individual differences in rigidity in the implementation of these processes determine the degree of psychopathology. The aim of this article is to examine the relationship between rigidity/flexibility and transdiagnostic maintenance processes. Initial searches were made for research examining relationships between 18 transdiagnostic processes and rigidity/flexibility. Relationships between rumination, perfectionism, impulsivity and compulsivity, and rigidity/flexibility were systemically reviewed; 50 studies met inclusion criteria. The majority of studies indicated that transdiagnostic cognitive and behavioral maintenance processes and rigidity were correlated, co-occurring, or predictive of each other. Findings are consistent with the hypothesis that it is inflexibility in the manner in which processes are employed that makes them pathologically problematic. However, further research is required to test and establish this.

Keywords

Control theory, executive functions, flexibility, inflexibility, rigidity, set-shifting, task switching

Date received: 2 December 2016; accepted: 7 December 2017

Convergent evidence from genetic, neurophysiological, personality, and cognitive-behavioral research suggests that current diagnostic categories do not precisely specify the factors that cause and maintain psychopathology (Buckholtz & Meyer-Lindenberg, 2012; Morris & Cuthbert, 2012; Rössler, 2013). Numerous reviews have identified cognitive and behavioral processes that maintain psychopathology across disorders (Harvey, Watkins, Mansell, &

Shafran, 2004; Nolen-Hoeksema & Watkins, 2011). These are termed transdiagnostic processes.

An important narrative review of the flexibility literature (Kashdan & Rottenberg, 2010) has made a strong case that it is the ability to flexibly adapt responses, in order to meet situational demands and personal goals, which could be the key contribution that flexibility makes to well-being. Yet, Kashdan and Rottenberg's review did not systematically review

Corresponding author:

Lydia Morris, School of Health & Society, University of Salford, Fredrick Road Campus, M6 6PU, UK.

Email: lydiamorris@nhs.net



Creative Commons CC BY: This article is distributed under the terms of the Creative Commons Attribution 4.0 License

(<http://www.creativecommons.org/licenses/by/4.0/>) which permits any use, reproduction and distribution of the work without further permission provided the original work is attributed as specified on the SAGE and Open Access pages (<https://us.sagepub.com/en-us/nam/open-access-at-sage>).

research relating to the relationship between rigidity/flexibility and cognitive-behavioral processes. Furthermore, the authors suggested that additional work was necessary to integrate the different facets of flexibility. To indicate the difference between the studies reviewed in their review and the current review, only seven studies were included in reference list of both. Earlier reviews have also found it difficult to integrate the facets of rigidity (Chown, 1959; Schultz & Searleman, 2002). The current review offers a theoretical account of how the constructs of both rigidity and flexibility could be integrated. Our review is further informed by reviews that indicate that rigidity and flexibility are transdiagnostic processes (e.g., Robinson et al., 2006; Snyder, Miyake, & Hankin, 2015; van Holst, van den Brink, Veltman, & Goudriaan, 2010).

Although considerable research evidence is available for whether a particular cognitive-behavioral process is transdiagnostic or not, attempts to explain how such processes relate to each other are much less common. Further, there is increasing evidence that a number of transdiagnostic processes are associated with psychological distress only in certain contexts. We propose that the feature of these processes that is responsible for maintaining distress is the rigid or inflexible way that they are applied. We introduce perceptual control theory (PCT; Powers, 1973) as a framework to explain how and why rigidity may have this role. The first step in testing this proposal is to review broad neuropsychological, clinical, and personality research to establish whether measures of transdiagnostic processes are related to measures of rigidity and inflexibility. Showing correlations between rigidity/flexibility and transdiagnostic processes is a necessary but not sufficient step to establishing whether these processes, when applied rigidly, lead to psychopathology. The current review includes a number of studies examining correlational, predictive, and interaction relationships, using a variety of experimental paradigms and both clinical and nonclinical participants. These diverse methods of assessing rigidity and of transdiagnostic processes make it unlikely that correlations are purely based on circumstantial method variance of individual measures.

To introduce the review, we define transdiagnostic processes, rigidity, and flexibility. We then summarize the evidence that transdiagnostic processes are not consistently associated with psychological distress. Finally, we introduce an explanatory PCT framework.

Figure 1 provides a diagrammatic overview of the hypothesized model presented within this article.

The definition of a transdiagnostic process

A cognitive or behavioral process is defined as “an aspect of cognition (e.g. attention, memory, thought, reasoning) or behavior (e.g. overt or subtle avoidance) that may contribute to the maintenance of a psychological disorder” (Harvey et al., 2004, p. 14). It is recognized that the terminology of “styles” could be used for some of the “processes” reviewed; for example, “ruminative response style” can be used to indicate the repetitive nature of this process (Nolen-Hoeksema & Morrow, 1991) and perfectionism can be described as a style or a process (Egan, Wade, & Shafran, 2011). However, the term process is preferred in order to focus on proximal and contextual factors that can affect a specific episode of any of the processes reviewed (Roberts, Watkins, & Wills, 2013). A *transdiagnostic* process is defined as a cognitive or behavioral process that contributes to the maintenance of symptoms of psychological distress across a wide range of psychological disorders.

The definition and measurement of rigidity and flexibility

Conceptualizing rigidity and flexibility has proved difficult (Chown, 1959; Kashdan & Rottenberg, 2010; Schultz & Searleman, 2002). We briefly review some key ways in which these constructs have been conceptualized. We then consider definitions based on the extant literature.

Within the neuropsychological and neurobiological literature, rigidity is often defined in terms of a difficulty in switching from one set way of responding to a different way of responding and can be synonymous with set/task-switching difficulties. Flexible cognitive control is comprised of a number of aspects including “. . . the inhibition of unwanted habitual or impulsive responses” and “the rapid updating and flexible switching of goals and behavioral dispositions . . .” (Goschke, 2014, p. 44). Therefore, flexibility encompasses both inhibiting inappropriate goals and switching tasks to respond to changing demands (Meiran, 2010; Miyake et al., 2000). Task-switching and inhibition can be conceptualized as relatively independent processes and some paradigms

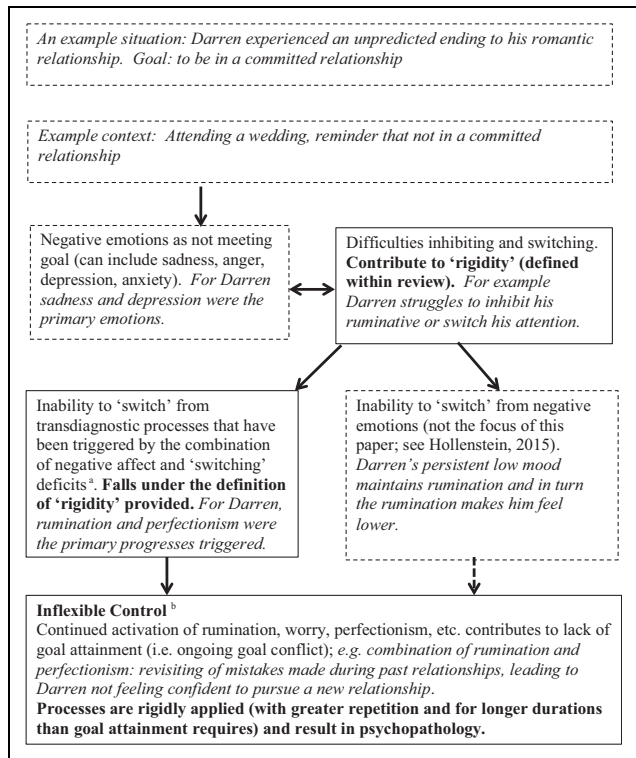


Figure 1. Overall model presented within the article, using an example. Notes. (1) Solid boxes indicate the relationships that this article primarily focuses upon. Dashed boxes provide overall context of the model. The example is italicized. (2) For the purpose of simplicity, feedback and bidirectional arrows are not used. But it is acknowledged that there will be additional feedback relationships as dynamic interactions involve constant feedback processes (Powers, 1973); for example, continued perfectionist rumination is likely to maintain negative affect (Di Schiena et al., 2012; Randles et al., 2010). ^aIt is recognized that inhibition deficits will also contribute to rigidity and inability to disengage from transdiagnostic processes. But (as discussed in the “The definition and measurement of rigidity and flexibility” section) it can be useful to separate these two constructs and the current review focuses more on switching. ^bThis construct is an aspect of arbitrary control (described in the account of PCT in the review introduction) but specifically focuses on instances where continued employment of a process prevents goal attainment and maintains internal conflict. PCT = perceptual control theory.

measure these specific components (Meiran, 2010; Whitmer & Gotlib, 2012). However, commonly theoretical accounts emphasize that the functions of switching and inhibition are highly interrelated (Koch, Gade, Schuch, & Philipp, 2010), with empirical data supporting this (Friedman & Miyake, 2004).¹ Therefore, it has been suggested that such executive

functions (EFs) exhibit both unity and diversity, that is, different components correlate (suggestive of a common underlying process) but also show separability (diversity) (Miyake et al., 2000; Miyake & Friedman, 2012).

Factor-analytic methods have been used to extract common and specific aspects of executive functioning (Friedman et al., 2008; Miyake & Friedman, 2012). Switching and inhibition are correlated at the latent level, but this variance is accounted for a common EF factor (Friedman et al., 2008). Further, at the latent level, inhibition is fully accounted for the common EF factor. The common factor is hypothesized to be the ability to maintain task goals in working memory and use them to direct behavior (Miyake & Friedman, 2012). Importantly, research indicates that common EF and switching-specific components can show opposing patterns of correlations (Altamirano, Miyake, & Whitmer, 2010; Friedman, Miyake, Robinson, & Hewitt, 2011) and, therefore, indicate that switching and common EF should be considered as separate (albeit interrelated) processes. Snyder et al. (2015) provided a review of this area.

A key, comprehensive review included a meta-analysis of three measures of rigidity and presented a definition (Schultz & Searleman, 2002). Based on this, and more recent conceptualizations of task sets within neuropsychological literature (e.g., Meiran, Kessler, & Adi-Japha, 2008; Miyake & Friedman, 2012), we define rigidity as “the tendency to develop and persevere in particular cognitive or behavioral patterns, and such patterns being continuously employed in situations where the pattern is no longer effective.”² For example, Rachel worries about her performance at work and tries to do her best to get her work perfect. She carries on perfecting work even when it means she does not meet a deadline in time. Rachel’s perfectionism enables her to produce work of a high standard, but she persists in perfecting her work even when this means that she does not meet a deadline and, therefore, is no longer working effectively.

A longstanding debate within rigidity literature is whether rigidity is a dispositional trait or a task-specific phenomenon observable under certain conditions (Chown, 1959; Schultz & Searleman, 2002; Stewin, 1983). In line with Schulz and Searleman (2002), the definition given incorporates both dispositional and context-specific explanations of rigidity. It is noted that for rigidity to be pathologically problematic, some degree of temporal stability is likely,

even if this is also task and context dependent (Schultz & Searleman, 2002). For example, a parent worrying about their child's education might help them clarify how best to support their child. However, if they keep worrying about this when they have put all the possible supports in place (a change in context that means that this no longer meets their goals), then this would be considered rigid. This is in line with a review of the literature that indicated that expression of a personality trait could vary as a function of context (Ferguson, Heckman, & Corr, 2011; Mischel & Shoda, 1995; Roberts, 2009), that is, even if rigidity was "trait like" (i.e., temporally stable), it would not manifest in all contexts. In a similar vein, it is also proposed that an individual could display rigidity in certain behavioral processes, but not in certain cognitive processes. To return to the example given earlier in this paragraph, of the parent worrying about their child's education, the parent might not persistently and excessively worry about their own work or even about their child's social relationships. This will be determined by the goals that are important to them; for example, they might value education more highly than their child having a lot of friends.

Following from the definition of rigidity given and with reference to the review by Kashdan and Rottenburg (2010), flexibility is defined as "despite an individual having formed a particular cognitive/behavioral pattern of responding to a specific situation they are able to disengage from this initial pattern if the initial pattern of responding is no longer effective for the specific situation." For example, Mumtaz has recently lost her mother and is experiencing a lot of sadness. While she is at work, she suppresses thoughts of her mother and appreciates being able to focus on her work; however, when she speaks to friends and attends a support group, she appreciates being able to fully experience and express her sadness. She is able to disengage from suppression of sadness within situations where it is not effective. Although not specifically emphasized in this definition, the authors propose that effectiveness of a given pattern of responding for an individual in a specific situation is determined by the individual's goals (Kashdan & Rottenburg, 2010).³ This is discussed in more detail in the section introducing the PCT-informed conceptual framework.

Throughout the review, the terms rigidity and flexibility will be used. However, rigidity is considered synonymous with inflexibility. One of the difficulties in providing a consistent account of rigidity and

flexibility is that flexibility can be considered interchangeable with switching abilities within the neuropsychological and neurobiological literature (e.g., Kehagia, Murray, & Robbins, 2010; Remijnse et al., 2013). However, flexibility in the clinical literature is often defined in terms of how effective a response is, that is, whether it involves switching from processes that are not in accordance with an individual's values/goals and can also encompass persisting with processes that are consistent with individual's goals. For example, the term is used in this way within acceptance and commitment therapy (ACT; Hayes, Strosahl, & Wilson, 1999) and relational frame theory (Hayes, Luoma, Bond, Masuda, & Lillis, 2006), some theoretical accounts of mindfulness (e.g., Shapiro, Carlson, Astin, & Freedman, 2006), and some CBT accounts (e.g., Dennis & Vander Wal, 2010). Although evidence suggests that effective switching results in greater flexibility (e.g., Snyder et al., 2015), there is a difference between the two conceptualizations described. This issue and a potential solution will be outlined within our conceptual account (the "An integrative PCT framework" section).

What is the relationship between rigidity and flexibility?

The authors' conceptualization of rigidity and flexibility is that these constructs are on the same dimension and are not conceptually distinct; consequently, the definitions of rigidity and flexibility provided are "mirror images" of each other. Furthermore, the definitions provided emphasize the ability to switch when a pattern of responding is no longer effective.

This conceptualization that rigidity and flexibility are opposite poles of a continuum is not new. Theorists have suggested that the rigidity of thought and behavior seen in many psychological disorders indicates a lack of contextual sensitivity and flexibility (Kashdan & Rottenburg, 2010). Furthermore, in the neuropsychological literature, flexibility and rigidity are generally seen to relate in this way; for example, flexibility is often measured by high ability to switch tasks and rigidity is often measured as low switching ability (Dennis & Vander Wal, 2010; Geurts, Corbett, & Solomon, 2009).

However, some theorists have considered rigidity to be a multidimensional construct rather than a unidimensional construct, with flexibility at the other end (Steinmetz, Loarer, & Houssemand, 2011) and a

distinction can be made between “cognitive” and “behavioral” rigidity (Schaie, Dutta, & Willis, 1991; Schultz & Searleman, 2002). It is noted that multidimensional conceptualizations of rigidity are common within the social and personality literature, but not in the neuropsychological literature. For example, Steinmetz et al. (2011) states

Presently, it is generally accepted that rigidity should not be considered as a one-dimensional construct with flexibility on the one extreme and rigidity on the other. Rigidity is to be considered as multidimensional in nature with perseverative behaviors in a multitude of personal habits, cognitive sets, and attitudinal sets. (Schultz & Searleman, 2002; also Schaie, Dutta, & Willis, 1991, p. 86)

A recent study utilized a multitrait-multimethod matrix and confirmatory factor analysis to investigate the correlations between self and informant ratings of rigidity and cognitive flexibility. Findings were of medium to large negative correlations between rigidity and cognitive flexibility measures (Steinmetz et al., 2011). Due to the strength of the correlation between latent factors of cognitive rigidity and flexibility ($r = -.46$), the authors suggest that rigidity and flexibility are not one-dimensional constructs (Steinmetz et al., 2011). They further conclude that: “Rigidity is not solely characterized by decreased flexibility in an individual’s behaviors and views. Rigid individuals show an important desire for restructuring their environments into more manageable forms with the aim of reducing their cognitive load” (p. 98). But it should be noted that a range of self- and informant-report measures measured flexibility and rigidity. This could contribute to lower correlations due to the unusual breadth of the items represented. For example, the Cognitive Flexibility Scale (Martin & Rubin, 1995) was used to measure cognitive flexibility. It includes items such as “I can communicate an idea in many different ways”; measures of rigidity included the Rigidity of Attitudes Regarding Personal Habits scale (Meresko et al., 1954), which includes items such as “The only way to make sure that things get done right is to set up a definite and fixed schedule and never depart from it.” Further, such measures could represent the converse dimension on the continuum. For example, the item described from the Rigidity of Attitudes Regarding Personal Habits scale could be reverse scored to represent flexibility of attitudes, or even reworded to represent such an attitude.

Further empirical work is required to clarify the exact relationship of these constructs. However, it is suggested that there is no conclusive evidence that rigidity and flexibility are not on a continuum. Even if rigidity is multidimensional, it is possible that each dimension is on a continuum; this could entail a continuum of rigid to flexible behavior, rigid to flexible cognitive control, and so on. Our theoretical rationale for this conclusion is provided in more detail in the section “An integrative PCT framework.”

Transdiagnostic processes are inconsistently related to psychological distress

To illustrate how transdiagnostic processes are established, we provide a summary of research pertaining to rumination and perfectionism, which are two of the processes focused upon in this review.

Rumination was established as a transdiagnostic maintenance process by Harvey et al. (2004), which reviewed the extant evidence to establish whether numerous cognitive and behavioral processes maintained psychopathology across Axis I disorders (including anxiety, mood, eating, psychotic, and substance-related disorders). Further reviews have provided additional support that rumination maintains psychopathology in all the disorder clusters aforementioned (Ehring & Watkins, 2008; Nolen-Hoeksema & Watkins, 2011; Watkins, 2015). In addition, rumination predicts the onset of multiple psychological disorders and symptoms, including depression, anxiety, binge eating, and substance abuse (see Watkins, 2015). Perfectionism was established as a transdiagnostic maintenance process for anxiety, mood, and eating disorders by a review in 2011 (Egan, Wade, et al., 2011); this review also indicated that perfectionism prospectively predicts eating disorders, depression, and bipolar disorder. More recent research supports this and indicates that perfectionism may predict anxiety symptoms (Mackinnon, Battista, Sherry, & Stewart, 2014; Mandel, Dunkley, & Moroz, 2015), although findings are mixed as to whether the relationship is prospective or concurrent (Gautreau, Sherry, Mushquash, & Stewart, 2015; Sherry, Richards, Sherry, & Stewart, 2014).

Table 1 provides a summary of transdiagnostic processes and research establishing their transdiagnostic status. (The research described within this table is based on previous reviews and, therefore, is determined by the extant evidence at the time of these

Table 1. A list of selected transdiagnostic processes based on previous reviews of research evidence (see source section for the specific reviews used).

Transdiagnostic process	Definition	Diagnoses that the process is related to (Axis I disorders)	Source
Selective attention to internal or external stimuli	“Selective attention refers to a process by which specific stimuli, within the external and internal environment are selected for further processing” (Harvey et al., 2004, p. 26)	Anxiety disorders (panic disorder, specific and social phobia, OCD, PTSD, GAD), pain disorder, hypochondriasis, BDD, eating disorders, psychotic disorder, and substance-related disorder	Harvey et al. (2004) ^a
Attentional avoidance and attention toward safety	This refers to directing attention away from possibly threatening stimuli and toward stimuli that have the potential to offer safety (Harvey et al., 2004)	Anxiety disorders (specific and social phobia), sexual disorder, unipolar depression, and psychotic disorder	
Explicit selective memory	A bias toward remembering concern-relevant stimuli from consciously retrieved, previously presented, stimuli (Harvey et al., 2004)	Anxiety disorders (panic disorder, social phobia, OCD, PTSD/ASD, GAD), eating disorders, unipolar and bipolar depression, and substance-related disorder	
Recurrent memory	Recurrent intrusive memories, including images (Harvey et al., 2004)	Anxiety disorders (panic disorder, social phobia, PTSD/ASD), and unipolar and bipolar depression	
Interpretative reasoning bias	Reasoning is concerned with deducing conclusions, generating judgments, and testing hypotheses in a logical way. “Interpretative reasoning involves reaching a conclusion as to the meaning of an ambiguous or open-ended situation” (Harvey et al., 2004, p. 136)	Anxiety disorders (panic disorder, social phobia, PTSD/ASD, GAD), pain disorder, social phobia, hypochondriasis, sexual disorder, eating disorders, impulse control, unipolar depression, psychotic disorder, and substance-related disorder	
Expectancy reasoning bias	“Expectancy reasoning involves the processes used to predict the likelihood of future events and to predict the outcomes that might result from particular actions or situations” (Harvey et al., 2004, p. 136)	Anxiety disorders (panic disorder, specific and social phobia, OCD, PTSD/ASD, GAD), pain disorder, hypochondriasis, sexual disorder, eating disorders, impulse control, unipolar depression, psychotic disorder, and substance-related disorder	
Recurrent thinking: rumination and worry	Rumination: “a mode of responding to distress that involves repetitively and passively focusing on symptoms of distress and on the possible causes and consequences of these symptoms” (Nolen-Hoeksema et al., 2008, p. 400). “Worry typically involves repetitive thinking about future potential threat, imagined catastrophes, uncertainties, and risks” (Watkins, 2008, p. 164)	Anxiety disorders (social phobia, OCD, PTSD/ASD, GAD), pain disorder, eating disorders, sleep disorder, unipolar depression, and psychotic disorder	
Avoidance behavior	Avoidance, or premature leaving, of fear-evoking situations (Harvey et al., 2004)	Anxiety disorders (specific phobia; PTSD/ASD), pain disorder, unipolar depression, and psychotic disorder	

(continued)

Table 1. (continued)

Transdiagnostic process	Definition	Diagnoses that the process is related to (Axis I disorders)	Source
Safety behaviors	Overt or covert behaviors to avoid a feared outcome (Salkovskis, 1991)	Anxiety disorders (panic disorder, specific and social phobia, OCD), BDD, eating disorders, sleep disorder, and psychotic disorder	
Experiential avoidance	“Experiential avoidance is the phenomenon that occurs when a person is unwilling to remain in contact with particular private experiences (e.g., bodily sensations, emotions, thoughts, memories, behavioral predispositions) and takes steps to alter the form or frequency of these events and the contexts that occasion them” (Hayes et al., 1999, p. 1154)	Anxiety disorders (panic disorder, specific and social phobia, OCD, PTSD/ASD), pain disorder, unipolar depression, sleep disorder, psychotic disorder, and substance-related disorder	Harvey et al. (2004) and Hayes et al. (1999)
Perfectionism	Clinical perfectionism (i.e., psychopathological perfectionism) has been defined as “the overdependence of self-evaluation on the determined pursuit of personally demanding, self-imposed, standards in at least one highly salient domain, despite adverse consequences” (Shafiq et al., 2002, p. 778). Of note, is the fact that there are other understandings of perfectionism, which specifically state that perfectionism has positive and negative forms (e.g., Owens & Slade, 2008)	Eating disorders, depression, bipolar disorder, and anxiety disorders (OCD, panic disorder)	Egan, Wade, et al. (2011) ^b
Intolerance of uncertainty	A “tendency to react negatively on an emotional, cognitive, and behavioral level to uncertain situations” (Buhr & Dugas, 2009, p. 216)	Anxiety disorders (panic disorder, social phobia, OCD, GAD), eating disorders, hypochondriasis, and unipolar depression	Einstein (2014) and Gentes and Ruscio (2011)
Neuroticism	“Represents an individual’s tendency to experience psychological distress” (Costa & McCrae, 1992)	Anxiety disorders (panic disorder, social phobia, agoraphobia, specific phobia, GAD, PTSD, OCD), unipolar depression, substance-related disorder, eating disorders, psychotic disorder, and somatoform disorders	Kotov, Gamez, Schmidt, and Watson (2010) and Malouff, Thorsteinsson, and Schutte (2005)
Impulsivity	“A predisposition toward rapid, unplanned reactions to internal or external stimuli without regard to the negative consequences of these reactions to the impulsive individuals or to others” (Moeller et al., 2001, p. 1784)	Depression, bipolar disorder, eating disorders, impulse control, and substance-related disorder	Aragues, Jurado, Quinto, and Rubio (2011); Carver, Johnson, and Joormann (2008, 2013); Hoffman et al. (2012); Johnson, Carver, and Joormann (2013); Johnson, Carver, Mulé, and

(continued)

Table 1. (continued)

Transdiagnostic process	Definition	Diagnoses that the process is related to (Axis I disorders)	Source
Compulsivity	The tendency (compulsion) to perform repetitive behaviors or mental acts (Taylor, 2011)	Anxiety disorders (OCD), eating disorders, impulse control, and substance-related disorder	Joormann (2013); Robbins, Gillan, Smith, de Wit, and Ersche (2012); and Verdejo-Garcia, Lawrence, and Clark (2008) Grant, Potenza, Weinstein, and Gorelick (2010); Hoffman et al. (2012); Naylor, Mountford, and Brown (2011); Taylor (2011); and Wareham and Potenza (2010)
Executive and attentional control deficits: working memory, inhibition, and switching	An influential model of executive functions describes three key aspects: (1) <i>updating</i> (adding relevant and removing no longer relevant information from working memory), (2) <i>shifting</i> between tasks or mental sets, and (3) <i>inhibiting</i> prepotent responses, as well as a <i>common EF</i> component tapped by all EF tasks (and which may subsume inhibition)" (Snyder, 2013, p. 82; describing the model of Miyake et al., 2000 and Miyake & Friedman, 2012)	Anxiety disorders (OCD, PTSD), eating disorders, bipolar disorder, unipolar depression, impulse control, psychotic disorder, and substance-related disorder	Goschke (2014); Roberts, Tchanturia, Stahl, Southgate, and Treasure (2007); Snyder et al. (2015); van Holst et al. (2010); and Zakzanis, Campbell, and Polsinelli (2010)

Notes. ASD = Acute stress disorder; BDD = Body dysmorphic disorder; GAD = General anxiety disorder; OCD = Obsessive compulsive disorder; PTSD = Post traumatic stress disorder.

All of the above processes have been defined in various ways, where major conceptual differences exist, then multiple definitions have been included. This table is provided as a summary of much more detailed reviews. Subtleties in the research regarding which diagnoses are related to which cognitive and behavioral processes cannot be fully captured (e.g., where results are mixed, it has been necessary to base the judgment to include a diagnosis on whether the majority of methodologically stronger studies support the relationship).

^aAll processes sourced from Harvey et al. (2004) met their criteria for a "definite transdiagnostic process." A definite transdiagnostic process is one, whereby "the majority of evidence, which must be at least of moderate quality, indicates that the process is present in all of the disorders in which it has been investigated. As a minimum, the process must have been investigated in four or more disorders" (Harvey et al., 2004, p. 24).

^bEgan et al. (2011) state: "For the purposes of this paper, we consider a transdiagnostic process not simply as one which occurs across different diagnoses but also one that is either a risk factor for the disorder or a maintaining mechanism" (p. 2).

^cThe final four sets of processes: intolerance of uncertainty, impulsivity, compulsivity, and executive and attentional control deficits have not been specifically reviewed using a definition and strategy similar to Harvey et al. (2004). Therefore, a number of reviews and papers are cited to support the claims (made by varied authors) that these are transdiagnostic processes.

reviews; a systematic review of empirical studies would be required to fully update the transdiagnostic status of different processes.) However, there is considerable evidence that transdiagnostic processes, whether behavioral or cognitive in nature, are *not* consistently associated with psychological distress. We briefly review examples of these in turn.

Behavioral avoidance can refer to avoidance, or premature leaving, of fear-evoking situations (Harvey et al., 2004). Safety behaviors involve overt or covert behaviors to avoid a feared outcome (Salkovskis, 1991). Although there is considerable evidence that safety behaviors can maintain and exacerbate anxiety (Helbig-Lang & Petermann, 2010), there is increasing evidence that judicious⁴ use of safety behaviors does not reduce the effectiveness of exposure therapy for anxiety and, in some instances, actually improves it (Deacon, Sy, Lickel, & Nelson, 2010; Hood, Antony, Koerner, & Monson, 2010; Milosevic & Radomsky, 2008; Rachman, Radomsky, & Shafran, 2008; Rachman, Shafran, Radomsky, & Zysk, 2011). In a recent review, it was suggested that a particular behavior can be more or less functional within a given situation (Helbig-Lang & Petermann, 2010); for example, preparing for a presentation might be functional, yet excessive preparation (commonly seen in social anxiety disorders) can be counterproductive.

Covert behaviors seem to show a similar pattern of findings. For example, emotional suppression is generally positively associated with psychopathology (Aldao, Nolen-Hoeksema, & Schweizer, 2010). However, emotional suppression can also be adaptive, such as choosing to suppress grief at work so that one can achieve the tasks of the day. Indeed, research shows that emotional suppression can predict *reduced* distress over time (Bonanno, Papa, Lalande, Westphal, & Coifman, 2004; Westphal, Seivert, & Bonanno, 2010). In the same studies, effective emotional expression, which is apparently opposite to emotion suppression, also predicted reduced distress (Bonanno et al., 2004; Westphal et al., 2010).

Further, a comprehensive review indicated that worry is not consistently associated with psychological distress (Watkins, 2008). Similarly, evidence from different research groups suggests that ruminative thinking has adaptive elements (Joormann, Dkane, & Gotlib, 2006; Treynor, Gonzalez, & Nolen-Hoeksema, 2003). In order to explain these findings, several authors have turned to accounts that refer to rigidity; for example, Watkins & Nolen-Hoeksema (2014) propose that one of the aspects that makes

ruminative thinking pathological is when it becomes habitual and recognize that deficits in attentional control (including inhibition) could result in difficulties in interrupting habits. A seminal review of the role of self-focused attention in psychopathology proposed that it is the rigidity of self-focused attention that maintains distress across disorders (Ingram, 1990). More recently, it has been found that “mind wandering” (attention shifting from an activity toward unrelated inner thoughts and feelings) becomes maladaptive when it becomes a rigid pattern (Ottaviani, Shapiro, & Couyoumdjian, 2013).

Personality style research indicates similar patterns of findings and explanation. For example, perfectionism has been conceptualized as having both adaptive and maladaptive aspects, with evidence to support this distinction (Bergman, Nyland, & Burns, 2007; Bieling, Israeli, & Antony, 2004; Owens & Slade, 2008). However, attempts in clinical samples to differentiate between adaptive and maladaptive perfectionism have not fully supported a categorical distinction (Egan, Piek, Dyck, & Kane, 2011). It has been proposed that whether perfectionism is adaptive or could not be determined by the degree of perfectionism and whether this enables an individual to meet their goals in a given situation (Haase, Prapavessis, & Owens, 2013; Hamachek, 1978; Shafran, Cooper, & Fairburn, 2002). For example, studies indicate that individuals can experience both adaptive and maladaptive perfectionism depending on the domain (e.g., adaptive perfectionism at work, maladaptive regarding physical appearance) (Haase et al., 2013).

There are also more specific empirical findings to indicate that it is the rigid way that processes are applied that maintains distress. Several studies using a range of methodologies have found that people who use a mixture of different coping processes showed less anxiety and depression than those who showed rigid adherence to either problem or emotion-focused processes (Cheng, 2001; Cheng, Hui, & Lam, 2000). Furthermore, individual differences in flexibility of process use are associated with, and predictive of, adjustment in students exposed to trauma and/or stressors (Galatzer-Levy, Burton, & Bonanno, 2012). Even though certain transdiagnostic processes (such as rumination and emotion suppression) are generally associated with psychological distress compared to “adaptive” processes (such as acceptance, reappraisal, and problem-solving), it appears that there is another important difference—the “maladaptive” processes are applied with less variability (Aldao et al., 2010;

Aldao & Nolen-Hoeksema, 2012). This suggests that it could be when these processes become more rigidly “default” that they become pathological.

It is important to note that some processes—but not all—are explicitly conceptualized in terms of rigidity and, therefore, are more likely to promote psychopathology. For example, intolerance of uncertainty is defined as a “tendency to react negatively on an emotional, cognitive, and behavioral level to uncertain situations” (Buhr & Dugas, 2009, p. 216). While uncertainty itself can be adaptive (Bar-Anan, Wilson, & Gilbert, 2009; Einstein, 2014), this definition emphasizes a negative reaction to the unpredictable events that will inevitably arise. Consequently, intolerance of uncertainty and intolerance of ambiguity have been conceptualized as aspects of rigidity (Fergus & Rowatt, 2014; Schultz & Searleman, 2002).⁵ In such cases, these processes seem likely to lead negative outcomes (i.e., psychopathology, elevated distress). Further, commonly self-report measures of transdiagnostic processes include items that refer to processes being employed repeatedly and excessively. Our review examines whether defining transdiagnostic processes “in terms of” rigidity is appropriate, especially given the less consistent relationship with psychopathology in other domains (e.g., repetitive thinking, perfectionism, emotional suppression).

Overall, the evidence indicates that it is when certain processes are utilized rigidly that they become pathological. Yet, the studies reviewed above have commonly not used established measures of processes that can contribute to rigidity and flexibility (e.g., switching measures). Furthermore, it is necessary to understand how and why such processes are sometimes pathological, for example, so that pathological processes can be treated therapeutically.

An integrative PCT framework

It is important not merely to state that the rigid use of certain processes can result in distress and psychopathology, but to explain how and why this may be the case. Furthermore, a closely specified theoretical account can enable unique predictions. We use a self-regulatory macro-theory,⁶ PCT, to provide such an explanation.

Control is a key tenet of PCT. It is seen as a fundamental process and refers to keeping a perception as close as possible to a desired goal (or internal reference; see Figure 2 for the closed “negative feedback” loop that is the basic unit of control within PCT). A

full pathway round such as closed loop is necessary to implement the control of perception by behavior. The “reference” or goal refers to a broad range of “personal just rights,” from reference values for a good cup of tea (e.g., milky but strong) to reference values for being a good person (e.g., kind, honest, etc.). It is beyond the scope of this article to provide a detailed account of the evidence base for PCT (see Mansell & Carey, 2009; Marken & Mansell, 2013).

PCT suggests that these internal references are organized hierarchically with higher levels specifying the references for the levels below. Higher level references refer to self-concept and other important references, such as “I want to be a safe” and “I want to be capable.” It is proposed that enduring higher level conflicts between goals undermines control and is associated with distress (Carey, Mansell, Tai, & Turkington, 2014), and this is supported by a recent systematic review of the literature (Kelly, Mansell, & Wood, 2015). For example, a person who has been assaulted in their neighborhood may experience anxiety and indecision about whether to leave the house because they strive to be capable *and* safe from harm.

A PCT account offers a distinct explanation of when and how particularly rigid forms of control (including habits and psychological processes) lead to distress, by maintaining the goal conflicts described above (Mansell, 2012). Such control is termed *arbitrary control* (Mansell, 2005; Powers, 1973). Arbitrary control refers to “attempts to make behavior conform to one set of goals without regard to other goals (and control systems) that may already be controlling that behavior” (Powers, 1973, p. 271). Figure 3(a) illustrates how conflict at higher levels of the control system can lead to rigid employment of transdiagnostic processes. It is generally a conscious choice to aim at a particular goal and sometimes this will involve implementing a particular transdiagnostic process, but it is unlikely that it is a volitional goal “to be rigid” or impair other goals. For example, the beginning of ruminative thinking can either arise spontaneously or through conscious choice (Hertel, 2004; Watkins & Nolen-Hoeksema, 2014), as rumination can be perceived to facilitate understanding a situation better or further goal pursuit in other ways (e.g., Kingston, Watkins, & O’Mahen, 2013; Moberly & Watkins, 2010; Watkins, 2004). For this thinking to interfere with goal progress, and therefore to be rigid, it will need to be continued; this can be a conscious or more automatic process (Watkins & Nolen-Hoeksema, 2014). However, the extent to which an

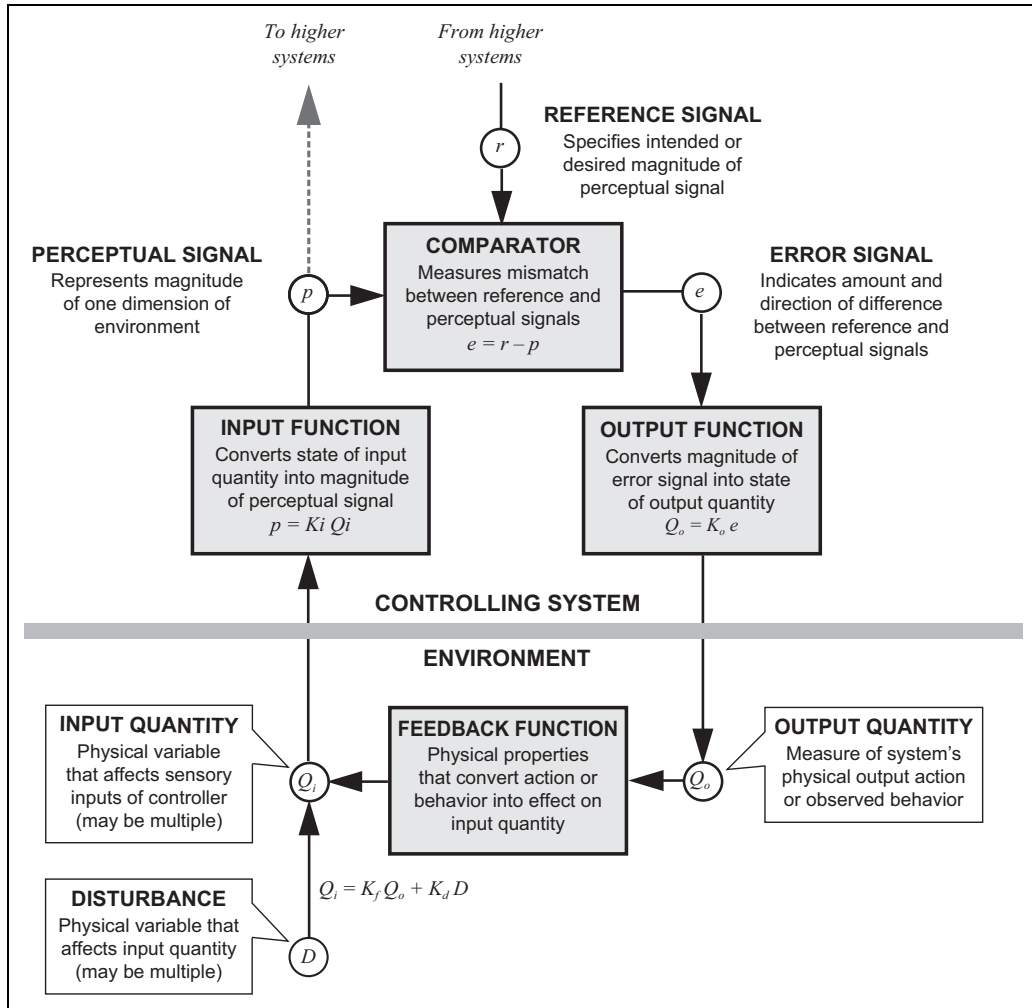


Figure 2. A model of the closed negative feedback loop described in PCT; definitions of key components are included within the diagram and a key is provided below (Redrawn by Dag Forssell from a diagram by William T. Powers). See Powers et al. (2011) for more details. Key: p = perceptual signal; r = reference signal; e = error signal; Q_i = input quantity; Q_o = output quantity; D = disturbance; K in each case (K_i , K_o , K_f , K_d) = a constant converting amount of input to amount of output at each of the indicated points in the loop. PCT = perceptual control theory.

individual is able to “switch from” rumination if they realize it is inconsistent with their goals will vary, as switching and inhibition deficits and low mood can contribute to difficulties disengaging (Koster, De Lissnyder, Derakshan, & De Raedt, 2011). So, in this example, the person is not choosing to be rigid, rather they are trying to reduce a behavior (rumination) that is not in line with their goals but are unable to effectively do so.

Arbitrary control is more likely to lead to goal conflict and psychological distress, because if one goal is pursued over another, then the second goal will not be met (Brandstädter & Renner, 1990; Kelly, Wood, & Mansell, 2012). For example, pursuing a goal of “work being perfect” by employing processes,

such as repeatedly checking work produced, could become problematic without being able to flexibly balance this with other goals, such as “completing work within time limits.” Thus, rigid implementation of a goal (via a goal-relevant process)⁷ is equivalent to pursuing a goal arbitrarily; when this process is implemented without current awareness of the conflict, it causes with other important goals. Such a conceptualization highlights the importance of (1) understanding the overall goal(s) an individual is trying to achieve and (2) establishing whether the transdiagnostic process that they are employing is in service of this goal(s).

There is recognition within the neuropsychological, clinical, and personality literatures that there is

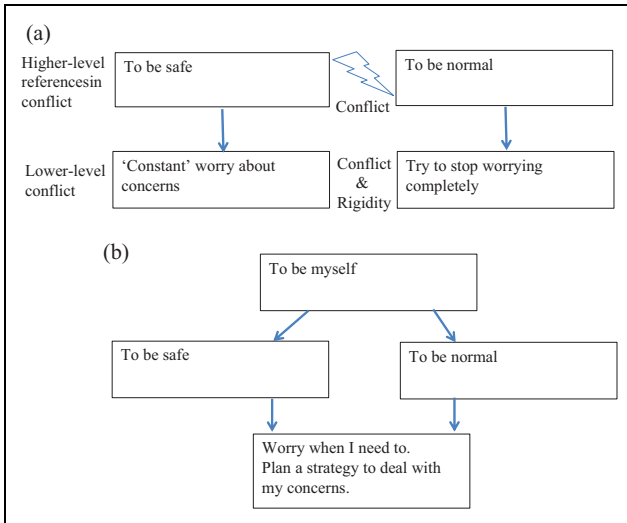


Figure 3. (a) Conflict at higher levels of the control system leading to rigid employment of transdiagnostic processes and lower level conflict. (b) Resolution of higher level conflict through awareness of the reference that is setting the conflicting goals. Note. The reference “To be myself” sets the references for “To be safe” and “To be normal.” Cognitively, this could be experienced as a realization that both “To be safe” and “To be normal” are valid goals of the self, and a balance can be achieved where both are met. The goals are the same as in Figure 2(a), and the individual is still worrying, but they have greater meta-flexibility (flexibility in meeting all their important goals).

a “trade off” between stable goal maintenance and flexible goal adaptation in order for an individual to meet personally important goals (e.g., Brands, Stapert, Köhler, Wade, & van Heugten, 2015; Goschke, 2000; Herd, Hazy, Chatham, Brant, & Friedman, 2014). Although stable stimulus–task associations allow effective responding under equivalent conditions, they can interfere when a new response is required (Goschke, 2000). For example, as rumination can promote maintenance of a certain mindset (stability), it can be adaptive in tasks that require goal maintenance (Altamirano et al., 2010). The capacity to focus attention on one goal, and employ goal-related transdiagnostic processes, can be beneficial in some circumstances (e.g., Brands et al., 2015; Dunne, Coffey, Gallagher, & Desmond, 2014); however, not when this is at the ongoing expense of another important goal (Henselmans et al., 2011). This supports the suggestion that employment of transdiagnostic processes can be described as rigid when it impedes goal progress, as the same process can both facilitate and impede goal progress depending on the context.

PCT predicts a crucial role for awareness in order to reduce rigidity and promote flexibility. Within PCT, the change mechanism, known as *reorganization*, makes changes to the control system when a conflict between goals (or error) is detected (Powers, 1973). These changes occur at the point that awareness is directed within the control system. Thus, targeted awareness promotes flexibility, and such flexibility would entail acting in a way in which an individual is able to meet all of their important goals and would require awareness of these higher level goals (Morris, Mansell, & McEvoy, 2016).

Therefore, our PCT framework specifically predicts that it is vital to bring awareness to the higher level goals of the individual to establish whether continued employment of a particular process is flexible—is employment of this process in line with all the important goals of the individual? The importance of considering a broad range of goals has been recognized within the neuropsychological literature with a recent article, presenting a neural network model of individual differences in task-switching abilities, suggesting that their model could be enhanced by including an “outer loop” for meta-task goal maintenance (Herd et al., 2014, p. 22). They recognize that individuals have “trained” on range of tasks throughout their life and have goals outside of the current task. This suggests that an individual’s current important goals can influence whether they switch tasks. In line with this, the ability of an individual employ transdiagnostic processes to meet all of their important goals is described as *meta-flexibility*, in order to distinguish it from task-specific switching processes. The key implication of this term is that switching can be used in a flexible way (to support goal pursuit), but that switching will not always be flexible (will not always promote goal pursuit). Figure 3(b) illustrates how higher level conflict can be resolved through awareness of important goals, and how this can result in more flexible employment of transdiagnostic processes.

This meta-flexibility account is in accordance with the aforementioned conceptualization that there is a “trade off” between stable goal maintenance and flexible goal adaptation (e.g., Goschke, 2000). Both continuing with a task and switching to another task can be adaptive. It is also in accordance with self-regulatory theories, which emphasize the necessity of flexibility in order to meet important goals (Carver & Scheier, 1998; Powers, 1973). For example, both tenacious pursuit of goals and flexible goal adaptation

have been shown to promote well-being in some situations and be detrimental to well-being in others (Henselmans et al., 2011; Wrosch, Scheier, & Miller, 2013). Initial evidence suggests that the degree of flexibility with which goals are tenaciously pursued moderates this relationship (Brandtstädter & Renner, 1990; Kelly et al., 2012).

Predictions that can be derived from this explanatory framework are that it is when employment of cognitive/behavioral processes promotes higher level goal conflict that such employment can truly be described as rigid and that people recover when awareness is brought to such higher level conflicts. A number of accounts, including PCT, suggest that “negative” emotions⁸ arise in response to perceiving stimuli in order to prepare the individual for action and to meet a goal (Boudreaux & Ozer, 2013; Morris et al., 2016). It has been suggested and evidenced elsewhere that negatively valenced emotions arise and endure when progress toward a goal is impeded (Carver & Scheier, 1998, 2013; Powers, 2005, 2008). Furthermore, it is recognized that negative emotions in themselves can make it more difficult for an individual to achieve their goals and inhibit transdiagnostic processes and, therefore, can directly contribute to rigidity. As shown in Figure 1, the same switching and inhibition deficits that prevent switching from transdiagnostic processes can also prevent switching from and inhibition of negative emotions. For example, considerable evidence indicates inhibition deficits in those who are depressed and particularly difficulties disengaging from negative material and rigid, repetitive rumination (e.g., Joormann, Yoon, & Zetsche, 2007; Koster et al., 2011). However, it is beyond the scope of this review to fully explore the relationship between negative emotion and rigidity; where possible, findings are reported that control for negative affect. The vicious cycle of negative emotions and transdiagnostic processes is broken by opportunities and interventions that broaden the individual’s awareness of their conflicted goals and help them to balance these more flexibly (Alsawy, Mansell, Carey, McEvoy, & Tai, 2014). Direct attempts to test these will require further research, which we return to in the discussion.

A review of the constructive and unconstructive consequences of repetitive thought concluded that a control theory account was the only one that explicitly hypothesized that repetitive thinking could have constructive as well as unconstructive consequences and, therefore, provided the most robust account (Watkins,

2008). Further, a control theory framework has been used elsewhere to explain the contexts in which a process can be both constructive and unconstructive (Egan, Wade, et al., 2011; Mansell, 2012). For example, in order to develop a clearer understanding of the form of perfectionism that maintains psychopathology, Shafran et al. (2002) have suggested a conceptualization of clinical perfectionism. What underlies such pathological perfectionism is whether unobtainable personal goals are rigidly pursued, that is, goals that cannot be obtained and/or that strongly conflict with other important goals (Egan, Piek, et al., 2011). Our use of a PCT framework allows that certain cognitive and behavioral processes are conceptualized in terms of rigidity and, therefore, are more likely to cause conflict and psychopathology. However, given our explicit emphasis that such processes are rigid only when they promote conflict with an individual’s other important goals, a therapist (or researcher) is less likely to assume a particular process is always maladaptive.

Therefore, elaborated control theory accounts can provide a specification of cognitive/behavioral maintenance processes that explains why these can be inconsistently associated with psychopathology (Watkins, 2008). In summary, this specification is that effective self-regulation requires flexible coordination between different levels within the goal hierarchy in order to meet valued goals (Carver & Scheier, 1998; Powers, 1973; Watkins, 2008). This entails responding to the contextual demands of different circumstances, that is, the employment of the most appropriate level within the goal hierarchy to meet the current task demands and the employment of correspondingly appropriate cognitive/behavioral processes (Watkins, 2008). However, such accounts do not specify that difficulties in switching (or inhibiting previously relevant task set) could impede appropriate employment of transdiagnostic cognitive/behavioral processes. Consequently, the PCT-informed framework presented here (see Figure 1) proposes that high levels of cognitive flexibility enable an individual to employ a transdiagnostic process (e.g., worry, thought suppression) in a way that ameliorates against their distress and may even have benefits. More specifically for the purposes of the current review, our framework predicts an association between transdiagnostic processes and psychopathology as a consequence of the fact that the existing measures of such processes partly assess the rigidity with which they are applied. This view would be supported by the

finding of consistent correlations between transdiagnostic processes and predefined measures of rigidity. This is the purpose of our systematic review.

Aims and hypotheses

As explained earlier, the aim of our review was to systematically examine the relationship between rigidity/flexibility and transdiagnostic processes that maintain psychopathology. We predicted that the majority of studies would find a correlational, or predictive, relationship between the measures of rigidity/flexibility and transdiagnostic processes. Correlational studies will provide evidence as to whether rigidity is commonly related to transdiagnostic processes. Of particular interest and support for the argument presented are studies that describe interaction effects (individuals who score highly on levels of rigidity and highly on levels of maintenance processes exhibit greater psychopathology) or that indicate that rigidity/flexibility predicts transdiagnostic processes.

Method

The methodology was informed by preferred reporting items for systematic reviews and meta-analyses (PRISMA) statement (Moher, Liberati, Tetzlaff, & Altman, 2009; see Appendix A). A meta-analytic approach was considered, but it was concluded that this would not be methodologically sound as any aggregation would be difficult to interpret due to heterogeneity in the designs of included studies and measures used (Liberati et al., 2009). Reviewed studies have used decidedly different methodologies and participant groups, and using meta-analytic approaches in such circumstances can mask important differences in findings (Cooper, 2003; Hinshaw, 2009).

Included measures

All measures of rigidity and flexibility that were covered by our definitions were included. Measures of switching and inhibition of task set will be included within the review. Measures of inhibitory processes that promote goal maintenance will not be included within this review. The experimental, self-report, and interview paradigms included are detailed below.

The experimental paradigms that measured switching and inhibition of previous task set were affective shift task, internal shift task, set-shift task, cognitive set shift task (CatBat), task-switching paradigm, Wisconsin card sorting test (WCST; including advanced

section), modified card sorting task, negative affective priming paradigm, modified Sternberg task, anti-saccade task, trail making test (TMT), Delis–Kaplan EF system TMT, Brixton test, picture set test, haptic illusion task (perceptual shift), and probabilistic reversal-learning task (involves shifting as the stimulus that was previously correct became incorrect, and vice versa). Shifting tasks (including the WCST, picture set test, and Brixton test) involve changing response pattern when a task rule changes; for example, the WCST involves sorting cards according to a rule that participants must ascertain purely from feedback as to whether their selection is right or wrong, the rule changes every 10 cards, and so participants must change their response once the rule changes. The term “task-switching paradigms” is generally used for tasks that involve similar shifting processes but also allow specific measurement of different EFs that may affect performance. Notably, some of the older performance-based measures (e.g., the WCST) involve a number of neurocognitive processes, such as substantial working memory demands (e.g., Hampshire & Owen, 2006; Wildes, Forbes, & Marcus, 2014) and, therefore, should be interpreted with caution.

The self-report measures of flexibility were Acceptance and Action Questionnaire (AAQ)–II and the flexibility subscale of the O’Brien Multiphasic Narcissism Inventory (OMNI). The self-report measures of rigidity were Persistence, Perseveration and Perfectionism Questionnaire (perseveration subscale); Test of Behavioral Rigidity (TBR), Rigidity Questionnaire; and Behavior Rating Inventory of EF—Adult Version (shift subscale). The EATATE interview paradigm was used to measure rigidity (inflexibility and being bound by rules).

It should be noted that self-report and experimental paradigms might measure different aspects of the same construct. For example, self-report measures might reflect a “typical performance,” whereas experimental measures provide greater control and tap performance on a specific occasion(s) (Hofmann, Gawronski, Gschwendner, Le, & Schmitt, 2005). However, both types of study were included so that the relationships of interest could be examined in a comprehensive manner across methodologies. Furthermore, most available studies used a combination of self-report and experimental paradigms.

These measures are diverse and variable in their psychometric properties; for example, a number of these measures have not been cross-validated with

other measures of rigidity and flexibility (Chown, 1959; Schultz & Searleman, 2002; Steinmetz et al., 2011). One measure with somewhat variable psychometric properties is the AAQ. The AAQ has a 16-item and a 9-item version, which have both predicted a wide range of outcomes (Bond et al., 2011; Hayes et al., 2006). However, the internal consistency has been low in a number of studies and the factor structure has been somewhat unstable (Bond et al., 2011). Recently, a 7-item AAQ-II has been developed and initial research has demonstrated sound factor structure and good reliability (Bond et al., 2011).

Data sources

Databases utilized in all searches were Embase (from 1974 to November 2014), MEDLINE (from 1946 to November 2014), and PsycINFO (from 1806 to November 2014). Restrictions imposed during searches were to identify studies that (a) were original peer-reviewed research articles, (b) used human participants, and (c) were written in English. For each study included in the review, manual searches of reference lists were conducted. One author was contacted to obtain additional data that were referred to in a study; they were unable to provide the information and the study was excluded.

Study selection

In order to identify the transdiagnostic processes to be included in this review, initial searches of reviews and relevant articles within this area were conducted (see Figure 4). A list of all processes identified in the book by Harvey et al. was compiled (Harvey et al., 2004). This book was the first attempt to review whether a number of cognitive and behavioral processes were common across a range of disorders. All processes they identified as transdiagnostic were included in the initial search terms. Given that this book was published in 2004, and in order to be as inclusive as possible, further transdiagnostic processes were included. Whether a process was considered to be transdiagnostic was determined by similar criteria to Harvey et al. (2004); that a process has been investigated in four or more disorders and the majority of evidence indicated that the process was present within all of these disorders. In addition, intolerance of ambiguity was included due to conceptual similarities with intolerance of uncertainty, despite being under-researched in clinical populations (Grenier et al., 2005). This resulted in a list of 18 processes: all-or-nothing/dichotomous thinking,

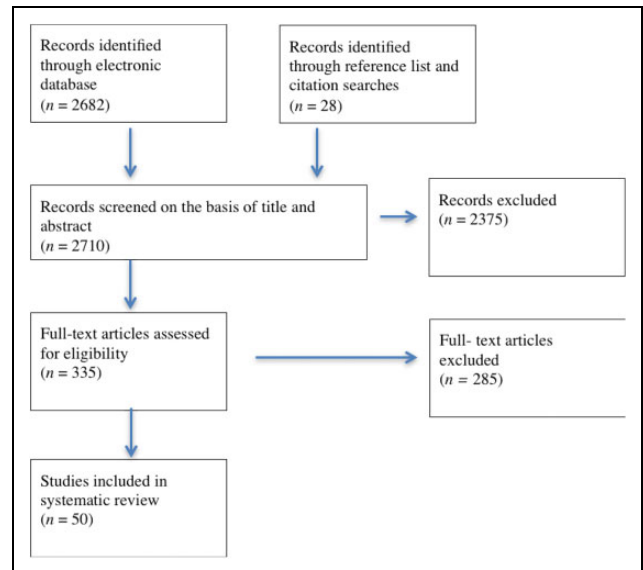


Figure 4. Selection of studies.

selective attention/attentional bias, attentional avoidance, elective memory, interpretation reasoning bias, expectation reasoning bias, emotional reasoning bias, avoidance behavior, safety behavior, experiential avoidance, pessimistic attributional style, intolerance uncertainty, intolerance ambiguity, worry, rumination, impulsivity, compulsivity, and perfectionism. All processes that this review mentions in detail are included in Table 1.

From this list, a preliminary abstract search was run for each of these 18 processes AND rigidity and for each of these processes AND flexibility. If these two searches generated a total of five or more potentially relevant papers, based on the abstract only, then the style was kept in the review. A paper was deemed appropriate in this regard if it reported an empirical study regarding associations or causal relationships between a transdiagnostic process and measures of rigidity or flexibility in an Adult Axis 1 disorder sample. Appendix B provides full search terms across all searches.

Based on this process, the transdiagnostic processes searched were selective attention/attentional bias, dichotomous thinking, rumination, worry, perfectionism, intolerance of ambiguity, compulsivity, and impulsivity. The search strategy used was to run an abstract search for studies using one of these processes AND a search term related to rigidity or flexibility. The searches identified 2,682 citations (after de-duplication).

Relevant titles and abstracts were identified against the following prespecified inclusion and exclusion criteria. Articles were included that were written in

English and that reported at least one empirical study regarding associations or causal relationships between specified processes and measures of rigidity or flexibility in an Adult Axis 1 disorder sample. Studies using analogue samples were also included when these measured subthreshold levels of transdiagnostic processes (e.g., high rumination). For example, correlational studies, studies investigating predictor variables, or prospective studies were included. Axis 1 disorders were focused upon in line with Harvey et al. (2004) and to keep the scope of the review manageable. Although Diagnostic and statistical manual of mental disorders (DSM-V) does not have axes, all the available research was conducted within previous versions of DSM (American Psychiatric Association, 1994).

Measures were included that measured rigidity/flexibility, and a relevant cognitive/behavioral process, experimentally or by self-report. Measures of switching were included, as were those that measured inhibition of previous task set, for example, difficulties inhibiting recently relevant information.

Citation searches were conducted on all papers included within the review, plus all examined full texts. Given the breadth of the search criteria in instances when an abstract was clearly not relevant, the full text was not searched; however, for all abstracts whereby potentially relevant tests, relationships or constructs were described that the full text was searched. For example, if an examination of cognitive flexibility was described, but it was not clear whether a relationship with a relevant process was examined, then the full text would be checked for relevance and for relevant citations.

Excluded were studies using nonhuman samples, samples of individuals with brain damage/organic brain impairment, samples of individuals with pervasive developmental disorder, samples of individuals with learning disability, child/adolescent samples (studies primarily with adults but which included data from participants aged 15 and over were included), and studies where participants were under the influence of drugs or alcohol. Appendix A provides an overview of the assessment of study quality.

Results

All tables report overall study design and the specific analysis/analyses used within the systematic review. Where partial eta squared (η_p^2) is used as a measure of effect size, the benchmarks of Cohen (1969) are used

to indicate small, medium, and large effects (based upon values of f that correspond to values of η_p^2 of .0099, .0588, and .1379, respectively) (Cohen, 1969; Richardson, 2011). Effect size is reported using Pearson's r wherever appropriate and, where possible, has been calculated for studies in which no effect size has been given. Person's r was calculated using (1) mean, standard deviation, and sample size (for one study, this was calculated without an available sample size); (2) F -test statistics (F -value, sample size); and (3) T -value (T -value, sample size).

Rumination

Eight studies found that rumination was associated with task-switching difficulties using a variety of experimental tasks (Altamirano et al., 2010; Brinker, Campisi, Gibbs, & Izzard, 2013; Davis & Nolen-Hoeksema, 2000; De Lissnyder, Koster, & De Raedt, 2012a; De Lissnyder, Koster, Goubert, et al., 2012b; Koster, De Lissnyder, & De Raedt, 2013) (see Table 2). However, one study found more mixed results on the WCST; depressive brooding was associated with categories completed, but not perseverative errors (Miranda, Valderrama, Tsydes, Gadol, & Gallagher, 2013). Five studies indicated that such switching difficulties in ruminators were more strongly related to difficulties inhibiting previously relevant task set than difficulties in switching task per se (De Lissnyder, Derakshan, De Raedt, & Koster, 2011; De Lissnyder, Koster, Derakshan, & De Raedt, 2010; Meiran, Diamond, Toder, & Nemets, 2011; Whitmer & Banich, 2007). The majority of these studies used the Ruminative Response Scale (RRS; long or short form) to measure rumination (Nolen-Hoeksema & Morrow, 1991; Treynor et al., 2003).⁹ The pattern of results has been replicated in a clinical sample (Whitmer & Gotlib, 2012).

Two further studies indicate that rumination is associated with difficulties inhibiting previously relevant information (Owens & Derakshan, 2013; Zetsche & Joormann, 2011). In contrast, in one study, a rumination manipulation interfered with inhibitory processes in the dysphoric group only (Philippot & Brutoux, 2008). However, this study could not clearly differentiate between switching and inhibitory deficits and is also limited by a relatively small sample size (approximately 20 per group).

Emotional material may impact on the degree of impairment, with research suggesting that inhibitory deficits are particularly marked with regard to

Table 2. Characteristics of studies investigating rumination and rigidity/flexibility.

Study	Population, design (analysis if different from design)	Measure of rumination	Measure of flexibility/rigidity	Findings
Altmirano et al. (2010)	Nonclinical, correlational	Shortened RRS	Letter-naming task	Post cue letter-naming accuracy was negatively correlated with RRS scores, $r = -.30$, $p = .005$; indicates that greater rumination associated with poorer shifting
Brinker et al. (2013)	Nonclinical, regression	– RRS – Rumination or distraction condition	WCST	RRS predicted the number of shifts on the WCST ($p < .01$, $\beta = -.349$)
Experiment 2				
Davis and Nolen-Hoeksema (2000)	Nonclinical, between groups (ANCOVA)	Shortened form RRS	WCST-AS	Ruminators found to commit more perseverative errors than non-ruminators, $p < .05$, $r = .18$ Ruminators failed to maintain set more often than non-ruminators, $p < .05$, $r = .27$
De Lissnyder et al. (2010)	Nonclinical, between groups (regression)	RRS-NL	AST	Depressive brooding predicted shifting impairment (also entered were reflective pondering, BDI-II scores), $p < .001$, $R^2 = .10$ ($r = .32$) Depressive brooding predicted impaired inhibition, $p < .05$, $R^2 = .05$ ($r = .71$)
De Lissnyder et al. (2011)	Nonclinical, between groups (ANOVA and regression)	RRS	Antisaccade task	High ruminators had slower antisaccade latencies (inhibition) than low ruminators ($p < .5$, $t = 2.37$, $r = .34$). Regression analysis (predictors: depressive symptoms, brooding and reflective rumination) indicated that brooding was predictive of antisaccade latencies ($p < .05$, $R^2 = 10\%$; $r = .32$). Rumination not associated with switching impairments.
De Lissnyder et al. (2012a)	Nonclinical, between groups (ANOVA)	RRS-NL	Modified IST	High ruminators showed impaired switching in the context of emotional stimuli, compared to low ruminators, reflected in a larger switch cost ($p < .05$, $t = 2.35$, $r = .36$)
De Lissnyder et al. (2012b)	Nonclinical, prospective (multilevel regression)	RRS-NL	Modified IST	Impaired internal switching for emotional information moderated the association between stress and depressive brooding, $p = .003$, $r = .44$ (controlling for baseline brooding and depression)
Genet et al. (2013)	Nonclinical, correlational (multilevel random coefficient modeling)	Daily diary entry:		1. Affective flexibility predicted daily rumination $p < .01$ 2. Cognitive flexibility was not correlated with daily rumination

(continued)

Table 2. (continued)

Study	Population, design (analysis if different from design)	Measure of rumination	Measure of flexibility/rigidity	Findings
		– Reported the extent to which they ruminated in response to the most unpleasant event of the day – Six modified items from the RRS	1. Novel affective task-switching paradigm 2. Task-switching paradigm	
Joormann (2006)	Nonclinical, between groups (ANOVA)	RSQ	Negative affective priming paradigm	High rumination group demonstrated less inhibition of both positive and negative words than low rumination group (controlling for depression), $p < .02$, $F = 6.09$, $r = .32$
Joormann and Gotlib (2008)	MDD and nonclinical, between group (correlation)	RRS	Modified Sternberg task	Significant correlations between intrusion effects and RRS rumination were found only in the MDD group, $r = .49$, $p < .02$ and not in the control group
Koster et al. (2013)	Nonclinical, between groups (ANOVA and regression)	RRS-NL	Modified IST	Switch cost in the emotion condition was larger in the high rumination group, compared to the low ruminators, $t = 2.22$, $p < .05$, $r = .34$. Regression analysis (depressive symptoms, brooding and reflective rumination as predictors) indicated that only brooding was predictive of shift costs in the emotional condition ($p < .05$, $\beta = -.51$) Switching cost was normal, but adjustment to single task conditions was slow (interaction: $p < .05$, $\eta_p^2 = .11$, fairly large effect size)
Meiran et al. (2011)	OCD/MDD, between groups (ANOVA)	Shortened RRS	Switching task	Partial correlations between brooding and WCST categories completed at follow-up significant, $r = -.33$, $p < .05$. But the correlation was not significant between brooding and failure to maintain set
Miranda et al. (2013)	Nonclinical, prospective (correlation)	RRS	WCST	For incongruent response trials, high ruminators had significantly lower accuracy than low ruminators, $p = .04$, $r = .35$
Owens and Derakshan (2013)	Nonclinical, between groups (ANOVA)	Shortened RRS	Task switching paradigm	Poor accuracy for high ruminators was driven by impaired filtering of the currently irrelevant task
Philippot and Brutoux (2008)	Nonclinical, between groups (ANOVA)	Rumination or distraction condition (dysphoric group and control)	Modified Stroop (including switching index)	Main effect of “switching errors” approached significance ($F = 3.68$, $p < .06$). Between groups contrasts indicated that dysphoric participants made more errors than the controls, especially in the rumination condition ($F = 2.13$, $p < .04$)

(continued)

Table 2. (continued)

Study	Population, design (analysis if different from design)	Measure of rumination	Measure of flexibility/rigidity	Findings
Whitmer and Banich (2007) Experiment 1	Nonclinical, correlational (regression)	RRS	Task-switching paradigm	RRS scores were significantly negatively correlated with set inhibition ($t = -5.92, p < .0001, r = -.693$), even when controlling for set-switching costs, depression, and worry ($t = -4.86, p = .015, r = -.63$). Set inhibition predicted RRS score while controlling for set-switching costs, $p < .0001$, but set-switching costs did not predict RRS score controlling for set inhibition, $p = .511$
Whitmer and Banich (2007) Experiment 2	Nonclinical, correlational (Regression)	RRS	Task-switching paradigm	RRS scores significantly predicted decreased inhibition ($t = -3.04, p = .004, r = .41$), even when controlling for set-switching costs, depression, and worry ($t = -2.52, p = .015, r = .36$)
Whitmer and Gotlib (2012)	MDD, between groups (ANOVA and regression)	Shortened RRS	Task-switching paradigm	MDD ruminative mood induction group exhibited significantly larger switch costs than the MDD distraction and the control rumination group (interaction: $p = .037, \eta_p^2 = .056$, medium effect size); trait rumination was related to inhibition deficits ($p = .050$) but not to increased switch costs ($p = .287$)
Zetsche and Joormann (2011)	Nonclinical, prospective (correlation and regression)	RRS	Negative affective priming paradigm	Reflection subscale of RRS negatively associated with priming for negative words, $p < .05, r = -.42$. After controlling for baseline scores, the negative priming score for sad faces was the only significant predictor of Time 2 rumination scores

Notes: ANOVA = Analysis of variance; AST = affective shift task. BDI-II = Beck Depression Inventory-II. IST = internal shift task. MDD = major depressive disorder. RRS = Ruminative Responses Scale. RSQ = Response Styles Questionnaire; WCST = Wisconsin card sorting test. WCST-AS = Wisconsin card sorting test-advanced section. WM = working memory.

negative stimuli. Specifically, three studies indicated that depressive rumination predicted deficits in inhibiting negative information (De Lissnyder et al., 2010; Joormann & Gotlib, 2008) and in set-shifting (Koster et al., 2013). Further, Genet, Malooly, and Siemer (2013) found that deficits in affective flexibility predicted increased rumination, but this only applied when participants were switching away from negative material. However, one study has indicated that high ruminators demonstrated more impaired inhibition for *both* positive and negative words than low ruminators (controlling for depression) (Joormann, 2006).

Overall, findings of the 19 studies in this section suggested that deficits in switching were associated with, and maybe predictive of, ruminative thinking. This supports the hypothesis that rigidity is associated with rumination. In the majority of studies, associations between switching and rumination remained significant when depression was controlled for. A range of paradigms were used to measure switching and inhibition. Six experiments indicated that trait rumination had a greater impact on inhibiting previously relevant task set than non-inhibitory switching processes. Although much of the evidence is from analogue samples, and none of the studies utilized random sampling, there are three studies that report results from clinical populations (generally with depression). Effect sizes are variable from fairly small ($r = .18$) to large ($r = .69$).

Perfectionism

In five studies within clinical and nonclinical samples, perfectionism and rigidity were associated (Grilo, 2004; Leyro, Berenz, Brandt, Smits, & Zvolensky, 2012; Lindner, Fichter, & Quadflieg, 2014; Serpell, Waller, Fearon, & Meyer, 2009; Waller et al., 2012) (see Table 3). In two studies, some measures of rigidity and flexibility were correlated with or predictive of perfectionism, but this was not consistent (Tchanturia, Morris, et al., 2004; Wetterneck et al., 2011). In a sample of clients with Obsessive compulsive disorder (OCD), a significant correlation was found between the OMNI Flexibility and Frost Multidimensional Perfectionism Scale (FMPS) doubts about actions subscale; however, no other significant correlations between the FMPS and Flexibility subscale were found (Wetterneck et al., 2011). Childhood perfectionism in individuals with current anorexia, or in long-term recovery, was strongly predictive of

performance on the trail making and Brixton tasks (Tchanturia, Anderluh, et al., 2004). However, childhood perfectionism was not predictive of rigidity on the other measures used, although this may reflect the measures, because these involved a range of perceptual, semantic, and other capabilities.

Overall, the research within these seven studies supports a relationship between rigidity and perfectionism. However, one study in a clinical sample found no correlation between shift costs and perfectionism (Filoteo et al., 2014). A further study in a clinical sample found that dichotomous thinking and rigidity (assessed by the TBR) combined were significant predictors of negative perfectionism, but only dichotomous thinking was a significant predictor of unique variance (Egan, Piek, Dyck, & Rees, 2007). However, the authors note that the TBR did not seem to adequately capture the clinical construct of rigidity.

Interestingly, Short, Mushquash, and Sherry (2013) found that while the FMPS doubts about action subscale was not correlated with perseveration on the Stroop task, there was an interaction between doubts about action and perseveration. Individuals who scored higher on perseveration and doubts about actions were more likely to engage in increased binge eating; thus these two styles together contributed to increased binging.

Overall, there is some evidence that rigidity and perfectionism are related. In a number of studies, measures of these two constructs were correlated (with r values of .39, .51, and .61). In one study, perfectionism predicted rigidity. However, the findings are preliminary and not totally consistent across measures. Insufficient studies have examined whether inhibition of task set or switching specific difficulties are more strongly associated with perfectionism. None of the studies utilized random sampling.

Compulsive behavior

In two student samples, perseveration/inflexibility was correlated with compulsive behaviors (Lawrence et al., 2006; Zohar, LaBuda, & Moschel-Ravid, 1995) (see Table 4). However, the magnitudes of the correlations were low. In another student sample, the AAQ-II was significantly positively correlated with Obsessive Compulsive Inventory–Revised washing subscale (Abramowitz, Lackey, & Wheaton, 2009). Given that it is stated in this study that the version of the AAQ-II used entails that higher scores indicate greater flexibility (less pathology), the direction of

Table 3. Characteristics of studies investigating perfectionism and rigidity/flexibility.

Study	Population, design (analysis if different from design)	Measure of perfectionism	Measure of flexibility/rigidity	Findings
Egan et al. (2007)	Depression/anxiety disorder, correlational (regression)	PANPS	TBR RQ	Dichotomous thinking and rigidity combined significant predictors of negative perfectionism in clinical sample ($R^2 = .71$, $p = .0001$, $r = .84$). But only dichotomous thinking was a significant predictor of a unique 43% of variance
Filoteo et al. (2014)	Anorexia nervosa, between groups (correlation)	Perfectionism subscale from EDI-2	Adapted category learning task	No significant correlation between shift costs and perfectionism
Grilo (2004)	Binge eating disorder, factor analytical (correlation)	DIPD-IV perfectionism	DIPD-IV rigidity factor	Rigidity and perfectionism factors most highly correlated with the three factors, $r = .51$, $p < .001$
Leyro et al. (2012)	Community (some with depression/anxiety), between groups (correlation)	PPPQ perfectionism	PPPQ perseveration	Perseveration correlated with perfectionism ($r = .61$, $p < .001$)
Lindner et al. (2014)	Anorexia recovered, between groups (correlation)	FMPS	BCST	Number of perseverations correlated with perfectionism in the recovered anorexia group ($r = .29$, $p = .004$)
Serpell et al. (2009)	Nonclinical, factor analytical (correlation/regression)	PPPQ perfectionism	PPPQ perseveration	Perseveration and perfectionism subscales correlated, $r = .39$, $p < .01$
Short et al. (2013)	Nonclinical, multi-method (correlation and regression)	Doubts about actions subscale: FMPS	Stroop (including assessment of ability to switch previous task set)	Perseveration not correlated with doubts about actions. Simple slopes analyses for individuals with low versus high perseveration indicated "doubts about actions" was a more robust predictor of binge eating for highly perseverative individuals ($p < .001$, $\beta = .41$)
Tchanturia, Morris, et al. (2004)	Eating disorders, between groups (regression)	EATATE interview	1. Brixton task 2. TMT 3. Cognitive set shift task (CatBat) 4. Picture set task 5. Haptic illusion task 6. EATATE	Childhood perfectionism was strongly predictive of performance on the TMT (time: $p = .01$, $\beta = .49$; errors: $p = .05$, $\beta = .43$) and on the Brixton task ($p = .004$, $\beta = .54$)
Waller et al. (2012)	Eating disorders and clinical comparison group, between groups (correlation)	PPPQ perfectionism	PPPQ perseveration	Perseveration and perfectionism subscales correlated, $r = .35$, $p < .001$
Wetterneck et al. (2011)	OCD, correlational	FMPS	OMNI	OMNI Flexibility and FMPS doubts about actions correlated ($r = .29$, $p < .05$)

Notes. BCST = Biology Card Sorting Task; DIPD-IV = Diagnostic Interview for DSM-IV Personality Disorders; EDI-2 = Eating Disorder Inventory-2; FMPS = Frost Multidimensional Perfectionism Scale; OMNI = O'Brien Multiphasic Narcissism Inventory; PPPQ = Persistence, Perseveration and Perfectionism Questionnaire; PANPS = Positive and Negative Perfectionism Scale; TMT = trail making test; TBR RQ = Test of Behavioral Rigidity, Rigidity Questionnaire.

Table 4. Characteristics of studies investigating compulsive behavior and rigidity/flexibility.

Study	Population, setting, design	Measure of compulsive behavior	Measure of flexibility/rigidity	Findings
Abramowitz et al. (2009)	Nonclinical, correlational	OCI-R	AAQ-II (10-item)	Correlation between AAQ-II and OCI-R washing subscale washing, $r = .21$, $p < .05$
Anderluh et al. (2009)	Eating disorders, between groups (Mann–Whitney), and predictive	EATATE interview	EATATE interview	Participants who reported childhood inflexibility had significantly longer duration of dieting ($p < .005$, $r = .26$), fasting ($p < .01$, $r = .28$), and shorter periods of regular binge eating ($p < .001$, $r = .29$) than those without. Participants who reported being bound by rules in childhood experienced significantly longer lifetime periods of excessive exercising ($p < .005$, $r = .35$)
Gloster et al. (2011)	Nonclinical, correlational	OCI-R	AAQ-II (7-item)	AAQ-II significantly correlated with the OCI washing ($r = -.29$), hoarding ($r = -.31$), ordering ($r = -.29$), checking ($r = -.28$), and neutralizing ($r = -.28$) subscales
Hashimoto et al. (2011)	OCD, between groups analysis (correlational)	YBOCS PI	TMT	Symmetry/ordering subscale significantly associated with switching difficulties on the TMT ($r = .777$, $p = .001$) Trend toward significant correlation between switching score on TMT and PI checking scale ($r = .291$, $p = .021$)
Kanakam et al. (2013)	Eating disorders, between groups (correlation)	OCI-R	1. WCST 2. EATATE	Perseverative errors on WCST significantly associated with ordering subscale ($r = .29$, $p = .04$) Perseverative errors associated with need for order and symmetry in childhood
Kelly et al. (2013)	Nonclinical, between groups (correlation)	EDE-Q	WCST	Total binge episodes associated with perseverative responses ($r = -.33$), more binge episodes were associated with greater perseveration
Kumbhani et al. (2010)	Schizophrenia, between groups (correlation)	OCI-R	1. DKEFS TM and WCST 2. BRIEF-A	1. Hoarding associated with poorer switching ability on the TM, $r = -.41$ ($p < .05$). Performance on the WCST not significantly correlated with OCI-R. 2. Self-rated shift score on the BRIEF-A not correlated with OCI-R subscales; however, informant rated shift correlated with checking ($r = .41$, $p < .01$) and hoarding ($r = .37$, $p < .05$)
Lawrence et al. (2006)	OCD, between groups (regression)	OCI-R	WCST	Perseverative errors on WCST associated with symmetry/order symptoms on the OCI-R ($R^2 = .13$, $p < .03$, $r = .36$)
Manning et al. (2013)	Pathological gambling, between groups (correlation)	SOGS	IED	No significant correlation between IED set shift and SOGS
McMillan et al. (2013)	Hoarding, correlational	Saving inventory revised	WCST	Hoarding behavior positively correlated with “failure to maintain set”

(continued)

Table 4. (continued)

Study	Population, setting, design	Measure of compulsive behavior	Measure of flexibility/rigidity	Findings
Schirmbeck et al. (2013)	Schizophrenia/schizoaffective disorder including clients with obsessive-compulsive symptoms, prospective (correlation)	Hamburger–Zwangsinventar: checking	1. WCST 2. TMT-B 3. Set-shift task	1. Perseverative errors associated with checking at baseline ($r = .31, p = .007$), but not at 12-month follow-up 2. TMT-B not significantly associated with checking at baseline, but was at follow-up ($r = .42, p = .003$) 3. Poorer set shifting associated with checking at baseline ($r = .29, p = .015$), but not at follow-up
Short et al. (2013)	Nonclinical, multi-method (correlation and regression)	Binge eating subscale from Eating Disorder Diagnostic Scale	Stroop (including assessment of ability to switch previous task set)	Perseveration was not correlated with binge eating
Wetterneck et al. (2011)	OCD, correlational (correlation and regression)	OCI-R	OMNI	Flexibility not significantly correlated with checking; ordering and neutralizing ($p < .10$)
Zohar et al. (1995)	Nonclinical, correlational	MOCI-R	WCST	Checking subscale of the MOCI (but not the washing, doubting, or slowness subscales) correlated with perseveration score on the WCST ($r = .24, p < .01$)

Notes. AAQ-II = Acceptance and Action Questionnaire-II; BRIEF-A = Behavior Rating Inventory of Executive Function-Adult Version; DKEFS TM = Delis–Kaplan executive function system, trail making; IED = Intra- extra Dimensional Set-shift; MOCI-R = Maudsley Obsessive Compulsive Inventory–Revised; OCI-R = Obsessive Compulsive Inventory–Revised; OMNI = O’Brien Multiphasic Narcissism Inventory; SOGS = South Oaks Gambling Screen; PI = Padua Inventory; TMT = trail making test; WCST = Wisconsin card sorting test; YBOCS = Yale-Brown Obsessive Compulsive Scale.

this correlation is surprising. However, it is also stated that AAQ-II is being used to measure experimental avoidance. Therefore, the findings must be interpreted with caution, because if the AAQ-II indicated greater experiential avoidance, then the correlation would be in the direction expected.

In three studies of clients with OCD, either checking or ordering behaviors were associated with greater rigidity (Hashimoto et al., 2011; Lawrence et al., 2006; Wetterneck et al., 2011). One study was methodologically limited as the sample size for the regression analysis was very low ($n = 39$), given the number of predictors (12) (Lawrence et al., 2006). In clients with compulsive hoarding, hoarding was associated with perseverative errors and hoarding severity correlated with failure to maintain set (McMillan, Rees, & Pestell, 2013). In addition, a study with clients with schizophrenia and OCD symptoms found that perseverative errors and poorer

set-shifting were significantly associated with checking at baseline, but not at 12-month follow-up (Schirmbeck et al., 2013). Conversely, TMT-B was not significantly associated with checking at baseline but was at 12-month follow-up. The majority of these studies support the relationship between compulsive behavior and rigidity. This has been further replicated in a sample of clients with schizophrenia (with no history of OCD); hoarding was associated with poorer switching ability (Kumbhani, Roth, Kruck, Flashman, & McAllister, 2010).

Further three studies of individuals with eating disorders (or eating difficulties) supported the relationship between rigidity and compulsive behavior. A large study investigated the association between rigidity in childhood (indicated by inflexibility and rule-bound traits) and a number of compulsive behaviors (Anderluh, Tchanturia, Rabe-Hesketh, Collier, & Treasure, 2009). Participants who reported

inflexibility in childhood had significantly longer duration of dieting and fasting and shorter duration of periods of regular binge eating than participants without this trait. A further study indicated that perseverative errors were significantly positively associated with ordering behaviors and need for order and symmetry in childhood (Kanakam, Raoult, Collier, & Treasure, 2013). In a nonclinical sample, the number of binge episodes was correlated with WCST perseverative errors (Kelly, Bulik, & Mazzeo, 2013).

As aforementioned, Short et al. (2013) found that individuals who scored higher on perseveration and doubts about actions were more likely to engage in increased binge eating; thus, these two processes together contributed to increased bingeing.

Overall studies provided evidence that compulsive behaviors were associated with rigidity. One study found that rigidity prospectively predicted a range of compulsive behaviors. Across all studies in this area, associations between rigidity/flexibility measures and compulsive behaviors were generally moderate to low. Additional research with clinical populations, which includes interaction terms, would be beneficial.

Impulsivity

The results of studies in this domain were somewhat mixed. Three studies in substance-dependent clients or nonclinical samples found that impulsivity was associated with rigidity (Ersche, Roiser, Robbins, & Sahakian, 2008; Fernandez-Serrano, Perales, Moreno-Lopez, Perez-Garcia, & Verdejo-Garcia, 2012; Van den Broek & Bradshaw, 1993) (see Table 5). However, Salgado et al. (2009) found no significant correlations between the WCST and the measures of impulsivity in an alcohol-dependent group. Another study found that higher impulsivity was associated with greater rigidity but failed to reach significance (Sweitzer, Allen, & Kaut, 2008); group numbers were fairly low at 17–21 per group.

Perseverations were significantly negative correlated with impulsiveness in recovered anorexic individuals and controls (Lindner et al., 2014). This was supported by a further study, in which impulsive anorexic clients showed significantly more shift errors than “normal performers” (Galimberti, Martoni, Cavallini, Erzegovesi, & Bellodi, 2012). However, the sample size for this analysis was very low.

Overall, the studies with clinical samples have generally found that impulsivity is associated with

rigidity (with r values of .21–.50). Studies using analogue samples provide additional, albeit limited, support that rigidity and impulsivity are associated. Again, the methodological quality of a number of studies is limited, including small sample sizes and lack of random sampling. Fewer studies in this domain used the newer and more precise switching paradigms. For example, few studies used paradigms that could discriminate between difficulties in inhibiting previously relevant task set and difficulties in switching per se. In summary, only a limited number of studies have investigated the relationship between impulsivity and rigidity; however, where both of these are present, they have generally been found to correlate.

Other studies: Selective attention and worry

This section reports the results of two studies: one regarding attentional bias and one worry. Deveney and Deldin (2006) indicated that individuals with major depressive disorder (MDD) performed more poorly than controls on an affective flexibility task when stimuli were negative; one can infer from this that the degree of flexibility was influenced by attentional bias.

A study using combination of different measurement paradigms found that cortisol reactivity and task-switching costs interacted to predict worry, but higher task-switching costs alone did not predict worry (Robinson, Ode, & Hilmert, 2011).

Clearly, there is insufficient to be able to draw any conclusions in these domains; however, the study on attentional bias supports earlier studies that found that emotionally salient material could result in greater impairments in switching and inhibition. It would have been useful if these studies examined whether rumination or worry moderated this relationship.

Discussion

In the areas covered by this review, the majority of studies have found a relationship between measures of rigidity and processes that can maintain pathology. Measures of rigidity were correlated with, predictive of (or predicted by), the processes examined. However, whether a significant relationship was found varied somewhat depending on the measures used. Relationships were nearly always in the expected direction, that is, greater rigidity was correlated with, or predictive of, greater levels of the transdiagnostic process (or greater levels of the process were more

Table 5. Characteristics of studies investigating impulsivity and rigidity/flexibility.

Study	Population, setting, design	Measure of impulsivity	Measure of flexibility/rigidity	Findings
Ersche et al. (2008)	Drug dependent, between groups (correlation)	BIS-II	PROB task	BIS non-planning score correlated with perseverative errors ($r = .26, p = .002$). BIS total scores showed a trend toward correlating with perseverative errors ($r = .22, p = .010$)
Fernandez-Serrano et al. (2012)	Cocaine dependent, between groups (correlation/regression)	UPPS-P impulsive behavior scale	1. Stroop (including switching index) 2. PROB task	1. Cocaine dependent not significantly more impaired switching than control group 2. Negative urgency correlated with the number of perseverative errors ($r = .209, p = .049$)
Galimberti et al. (2012)	Eating disorders, between groups (ANOVA)	BIS-II	1. ID/ED test	Participants were categorized into three groups (AN, BN, and controls) and were separately divided into poor, normal, and good performers on basis of SST score. ID/ED outcomes were the dependent variables. No significant differences were found in BN and control groups, while AN poor performers showed significantly more errors than normal performers in ED shift, $r = .62, p = .039$
Lindner et al. (2014)	Anorexia, recovered, between groups (correlation)	BIS-II	BCST	Perseverations significantly negative correlated with impulsiveness ($r = -.20, p = .004$)
Salgado et al. (2009)	Alcohol dependent, between groups (correlation)	IGT: non-planning impulsivity	WCST	In the alcohol-dependent group, no significant correlation found between measures of impulsivity and the WCST
Sweitzer et al. (2008)	Nonclinical, between groups (ANOVA)	1. BIS-II 2. Delay Discounting Questionnaire 3. IGT	WCST	No significant differences in number of perseverative errors between the high impulsive, medium impulsive, and low impulsive groups
Van den Broek and Bradshaw (1993)	Nonclinical, correlational	1. MFFT 2. BIS-8	MCST	1. Significant correlation between perseverative errors and impulsiveness index (MFFT) ($r = .50, p < .01$). Remained significant when age and intelligence were held constant ($r = .42, p < .02$) 2. No significant correlation between perseverative errors and BIS-8 impulsiveness

Notes. AN = Anorexia Nervosa; BIS-II = Barratt Impulsiveness Scale II; BN = Bulimia Nervosa; DKEFS = Delis-Kaplan executive function system; ID/ED test = intra-extra dimensional set shifting test; IGT = Iowa gambling task; MCST = modified card sorting task; MFFT = matching familiar figures test; PROB = Probabilistic Reversal-Learning; SST = stop signal task; UPPS-P = Urgency Premeditation Perseverance Sensation Seeking; WCST = Wisconsin card sorting test.

predictive of rigidity). The majority of studies used switching paradigms to measure levels of rigidity, but rigidity was also used to refer to a broader range of

paradigms (e.g., inhibition and self-report measures) (Joormann, Levens, & Gotlib, 2011; Tchanturia, Morris, et al., 2004; Whitmer & Banich, 2007).

This relationship was most consistently significant with regard to rumination and perfectionism. The majority of the 19 studies investigating rumination utilized between groups or correlational designs and nonclinical populations; however, there were two prospective studies. Overall, findings suggested that deficits in inhibition and switching were associated with, and maybe predictive of, ruminative thinking. In the majority of studies, associations between switching and rumination remained significant when depression was controlled for. Different experimental paradigms were used to measure switching and inhibition, but rumination was primarily measured through a limited number of self-report measures. A range of effect sizes were reported, from fairly small to fairly large, but the majority of studies reported medium effect sizes. In the area of perfectionism and rigidity, 9 of the 10 studies reported correlational relationships between the two constructs, using a range of measures. Effect sizes were mostly medium to large.

In the other areas, covered (impulsivity and compulsivity) effect sizes, or the consistency of findings, were lower. The majority of studies found a relationship in the direction expected (with a range of effect sizes). The studies of impulsivity and compulsivity rarely used the more precise switching paradigms, which could contribute to somewhat mixed results.

Does rigid application of transdiagnostic processes contribute to greater psychopathology?

Overall, correlational or predictive relationships were demonstrated and findings point to a statistical overlap between rigidity and maintenance processes, but for measures to be tapping into a single construct, a high correlation value of above .8 would be expected (Evans, 1996). This suggests that while the measures overlap (potentially due to features of rigidity within the measures of maintenance processes themselves), they also include components that may not contribute to the shared variance.

One possibility is our proposal that only a rigid application of these processes contributes to greater psychopathology. The shared variance could represent the common rigidity and the unique variance could represent process-specific factors. However, because impairments in EF are transdiagnostic, correlations between these and the other transdiagnostic processes reviewed could be because both of these are associated with psychopathology. The assessment of symptoms that constitute psychopathology will

pick up on the observable or reportable signs of the very processes that are being assessed (e.g., worry, perseverative compulsion). Although not fully addressing this issue, a number of the studies reviewed have included control groups or participants who are not experiencing psychological distress. Furthermore, some studies control for low mood, worry, and other symptoms that could explain some of the variance. In spite of this, the most reliable way to test whether transdiagnostic processes in conjunction with rigidity contribute to psychological distress would be to examine whether the interaction between a transdiagnostic process and rigidity predicts the maintenance and exacerbation of symptoms of psychopathology over time, when controlling for psychopathology at baseline. The authors are not aware of any such studies and this would be a useful area for future research.

If rigidity of application is a key factor in whether maintenance processes are problematic, then it would be expected that individuals who score high on levels of rigidity (or low on levels of flexibility) and high on levels of maintenance processes would be at greater risk of psychopathology. One study demonstrated that the interaction between perfectionism and perseveration contributed to increased binge eating, while perseveration alone did not (Short et al., 2013). Another study (not included within the systematic review) found that inhibition moderated the relationship between impulsiveness and bingeing/bulimic symptoms, but inhibition alone was not correlated with impulsiveness (Robinson, Pearce, Engel, & Wonderlich, 2009). This study did not measure the inhibition of task-set but indicates that the use of interaction terms could contribute to an understanding of how rigidity and transdiagnostic processes relate. These studies support the hypothesis that transdiagnostic processes in combination with switching/inhibition difficulties are predictive of psychopathology.

Four prospective studies have supported the related hypothesis that inhibition of task set and switching deficits have a causal role in inflexible employment of transdiagnostic processes (e.g., Joormann & Gotlib, 2008). Impaired inhibition predicted Time 2 rumination scores (controlling for rumination and depressive symptoms at Time 1) (Zetsche & Joormann, 2011). Impaired switching at Time 1 moderated the association between stress and increased rumination during a later stressful period (De Lissnyder, Koster, Goubert, et al., 2012). Further, perseverative errors on the WCST predicted suicidal ideation at

2–3 year follow-up, and ruminative brooding mediated the relationship between perseverative errors and suicidal ideation (Miranda et al., 2013). A large study (97 clients with eating disorders) found that participants who reported childhood inflexibility had significantly longer duration of dieting and fasting and shorter duration of periods of regular binge eating than those without; participants who reported being bound by rules in childhood experienced significantly longer lifetime periods of excessive exercising (Anderluh et al., 2009). This study used a self-report measure of inflexibility, and it is interesting that childhood inflexibility was particularly associated with high levels of compulsive dieting and fasting in adulthood, but with *shorter* duration of regular periods of binge eating. Given that perfectionism has been found to interact with perseveration to predict increased binge eating, this area requires further research (Short et al., 2013). Additional longitudinal studies are required. Overall, these studies provide some support for the model presented in Figure 1. However, they are clearly limited in number, and directions for future research are discussed in more detail toward the end of this section.

Which theoretical frameworks may account for the findings of the review?

These findings are consistent with the PCT explanatory framework proposed, but it was not possible to fully examine specific predictions of the theory based on the available data. Rigid employment of transdiagnostic processes can be problematic because this is more likely to lead to goal conflict; if one goal is pursued over another, then the second goal will not be met (Kelly et al., 2012). As aforementioned, when a particular process is employed in pursuit of a specific goal, it would only become problematic if this process impedes the achievement of another important goal. Therefore, when processes are applied rigidly, that is, repetitively and possibly with limited volitional control, they are more likely to impede goal awareness and attainment (Morris et al., 2016; Teachman, Joormann, Steinman, & Gotlib, 2012).

Specifically, a PCT account would predict that transdiagnostic processes are associated with distress when they maintain conflict between higher level goals. Goal conflict is associated with certain transdiagnostic processes (e.g., rumination and perfectionism), but it is not always specified/examined whether these processes are being applied particularly rigidly

or whether higher level conflicts are particularly detrimental (Boudreaux & Ozer, 2013; Emmons, King, & Sheldon, 1993; Martin, Shrira, & Startup, 2004; Mushquash & Sherry, 2012). Overall, this area requires more research, including examination of the relationship between higher level goal conflict, a range of (rigidly applied) transdiagnostic processes, and psychological distress. There are several methods of assessing goal conflict available, which vary in their capacity to assess conflict between higher level goals (see Kelly et al., 2015, for a review). For example, Varese, Mansell, and Tai (2017) used a modified version of the goal task (Dickson & MacLeod, 2004) with additional questions to enable participants to access important superordinate (higher level) goals that related to voices. Ratings of goal interference and facilitation derived from the strivings instrumentality matrix (Emmons & King, 1988) were used to assess higher level goals and their degree of conflict. Yet to date, such assessments of goal conflict have not been included in studies to test whether a transdiagnostic process and cognitive rigidity interact to maintain higher level goal conflict, which in turn mediates the maintenance of psychological distress.

Related to this, measures of switching and inhibition can be used to experimentally indicate rigidity. However, as previously described and indicated in Figure 1, according to our theoretical account, whether a transdiagnostic process is truly being employed rigidly is determined by whether it conflicts with an individual's goals. Paradigms described in the previous paragraph can be used to measure goal conflict. The paradigm used by Varese et al. (2017) could be adapted so that participants are asked specific questions about why they are using a particular process, and the same procedure could be used to ask about general goals that are important to participants. For example, the internal switch task could be administered to participants with MDD, levels of rumination could be measured with the Response Styles Questionnaire, then the paradigm to enable identification of higher level goals could be used to (1) identify goals related to rumination (e.g., is rumination perceived to help understand problems or perceived to be unhelpful) and (2) overall goals (e.g., overall important life goals, such as being a good parent, getting into a relationship). It would be predicted that the degree of conflict between goals related to rumination and overall goals would mediate levels of depression (higher conflict associated with higher depression). Further, that those with negative

appraisals of rumination (as unhelpful) would demonstrate higher switching and inhibition difficulties, because they would not believe that rumination helped them achieve their goals.

The finding that impaired inhibition of previously relevant task set is associated with rumination is consistent with Koster et al.'s (2011) useful "impaired disengagement hypothesis" of depressive rumination. However, it is suggested that this micro-theory is consistent with the broader PCT explanation, as the "impaired disengagement hypothesis" emphasizes how ruminative thought is problematic when it conflicts with an individual's self-view. For example, self-criticism or negative self-referential thinking commonly undermines the goals of positive self-regard. Further, the account states that, while the internal conflict signal will often promote disengagement from rumination, it is when individuals do not disengage that rumination increases symptoms and can negatively affect functioning (Rawal, Park, & Williams, 2010; Watkins & Moulds, 2005). In line with studies reviewed that indicated valence-specific biases (De Lissnyder et al., 2010; De Lissnyder, Koster, Goubert, et al., 2012; Genet et al., 2013), this account suggests that negative mood may increase the chances of impaired disengagement from rumination (Koster et al., 2011). In accordance with PCT, the "impaired disengagement hypothesis" explains that it is only when rumination causes conflict, and this processing endures, that rumination is pathologically problematic (Nolen-Hoeksema, Wisco, & Lyubomirsky, 2008). Considering this broader explanation suggests that "impaired disengagement" due to impaired inhibition (and impaired attentional control) may promote rumination in a range of disorders, as ruminative thinking is not limited to depressive disorders (e.g., social anxiety disorder, borderline personality disorder, eating disorders) (Baer, Peters, Eisenlohr-Moul, Geiger, & Sauer, 2012; Hofmann, 2007; McEvoy, Watson, Watkins, & Nathan, 2013).

The outcomes of the current review are also broadly consistent with ACT (Hayes et al., 1999). However, these findings do not clearly support the specific tenets of ACT. Psychological inflexibility in ACT "entails the rigid dominance of psychological re-actions over chosen values and contingencies in guiding action; this often occurs when people fuse with evaluative and self-descriptive thoughts and attempt to avoid experiencing unwanted internal events" (Bond et al., 2011, p. 678). Flexibility entails

higher levels of acceptance and value-based processes (Hayes et al., 2006) and inflexibility entails lower levels of such processes, including higher levels of experiential avoidance (Bond et al., 2011; Hayes et al., 2006). Support for this account could have been strengthened if a greater number of studies examined the relationship between experiential avoidance and measures that can indicate rigidity. The focus of the current review upon rigidity and flexibility as commonly defined in the psychological, neuropsychological, and neurobiological literature meant that acceptance and value-based processes were not specifically reviewed and, therefore, it is possible that relevant supportive research was missed.

Limitations of the current review

It is necessary to consider limitations of the systematic review strategy used here. Although a broad range of inclusive search terms was used, the authors did not include nonacademic publications or findings of conference abstracts that were not reported in a peer-reviewed journal. Therefore, the review is unable to assess the extent to which publication bias could have affected the findings reported. Furthermore, the systematic study selection was carried out by one author, which could limit objectivity.

The evidence base reported in the current review is preliminary. Measurement issues (e.g., variable psychometric properties, conflation of neuropsychological processes) limit the available literature. Further, this review is deliberately inclusive of a broad range of measures with varying time frames; for example, task-switching paradigms measure processes on the timescale of seconds, whereas mixing costs measure on the timescale of minutes, and self-report can measure various timescales (Meiran, personal communication). Although this is appropriate to the broad hypotheses of the review, it is highly recommended that researchers developing this topic use a more nuanced approach. It is recommended that researchers use more than one rigidity paradigm in order to measure general flexibility rather than task-specific processes (Meiran, 2010; Snyder et al., 2015) and chose paradigms that specifically measure different aspects of executive functioning. A range of EF can be impaired in certain client groups, but it is still important to establish whether this is the case and not to conflate impairments arising from different EFs (Snyder, 2013; Snyder, Kaiser, Warren, & Heller, 2014). Dynamic paradigms, such as ecological momentary

assessment, can be useful as these are able to examine within-individual adaptations to different contexts (Kashdan & Rottenberg, 2010). It is also noted that the current review does not examine neurobiological research and so cannot comment on whether the cognitive processes described arise from common, or distinct, neural mechanisms (Snyder et al., 2015).

It is important that future studies consider factors that have been found to be related to levels of rigidity in a number of studies. The majority of studies reviewed considered the potential impact of age or gender on switching abilities and some considered the potential impact of intelligence (Friedman et al., 2006; Schultz & Searleman, 2002; Tchanturia, Anderluh, et al., 2004). Apart from the studies on rumination (or with clients with depression), few studies considered the impact of mood (Dreisbach & Goschke, 2004; Marien, Aarts, & Custers, 2012; Meeten & Davey, 2011). Furthermore, very few studies considered the potential effect of state anxiety (Eysenck & Derakshan, 2011; Plessow, Fischer, Kirschbaum, & Goschke, 2011). Limited research has investigated whether switching/inhibition difficulties are a potential causal risk factor for developing psychopathology or a consequence of psychopathology (Snyder et al., 2015).

Summary of recommendations for future research

1. Studies that examine whether individuals who score highly on both rigidity and maintenance styles are at greater risk of psychopathology than those who score highly on one or the other.
2. In addition, studies that examine whether the interaction between a transdiagnostic process and rigidity predicts the maintenance and exacerbation of symptoms of psychopathology over time, when controlling for psychopathology at baseline.
3. Research examining whether the impact of rigidly applied processes is mediated by goal conflict, as indicated by our use of a PCT framework.
4. Further research examining whether rigidity is a potential causal risk factor for developing psychopathology or a consequence of psychopathology.
5. Further research examining how rigidity interacts with internal (e.g., mood) and external

context (e.g., situational demands), as well as transdiagnostic processes.

Conclusion

With increasing identification of transdiagnostic processes, it seems important to consider what mechanisms these processes may have in common, in order to contribute to a parsimonious explanation of psychopathology. The majority of studies indicated that measures of rigidity/flexibility and maintenance processes were correlated, co-occurring, or predictive of each other. Possible explanations for this were considered, but data were insufficient to draw any definite conclusions. Further studies with interaction terms are required in order to establish whether maintenance processes *in combination* with rigidity are particularly predictive of psychopathology.

Authors' note

The manuscript was written while both authors were affiliated with the University of Manchester. It was primarily written while the first author was in receipt of a North West Doctoral Training College, Economic Social Research Council, CASE Studentship Award. Initial work on the manuscript commenced while the first author was employed by Manchester Mental Health and Social Care Trust.

Acknowledgments

The authors would like to thank two reviewers of a previous version of the review and also Dr Julia Hose (consultant psychiatrist), Dr Elizabeth Murphy (clinical psychologist), Dr Rebecca Kelly (clinical psychologist), and Professor Alex Wood for their very insightful and helpful comments. The first author is now employed by the University of Salford.

Declaration of Conflict of Interests

The author(s) declared no potential conflicts of interest with respect to the research, authorship, and/or publication of this article.

Funding

The author(s) received no financial support for the research, authorship, and/or publication of this article.

Notes

1. Friedman and Miyake (2004) specifically found a high correlation between inhibiting responses to distractors and switch costs.

2. This definition encompasses emotional rigidity (or emotional inertia): “emotional inertia is the tendency to persist in emotional states, particularly negative states” (Hollenstein, 2015, p. 310).
3. Emotional (affective) flexibility falls within this definition. This can describe “cognitive flexibility in the processing of emotional material” (Genet & Siemer, 2011, p. 1) or emotional adaptability with regard to “qualitative shifts in context and/or goals” (Hollenstein, 2015, p. 311).
4. “Judicious” use is described as providing access to safety during exposure tasks in the early stages of treatment but subsequently reducing this (Rachman et al., 2008).
5. Although similar constructs, intolerance of uncertainty generally refers to difficulty tolerating a future situation where as intolerance of ambiguity refers to difficulty tolerating a present moment uncertain situation (Grenier et al., 2005).
6. Macro-theories aim to explain and model how basic psychological components relate in people experiencing psychological distress and those who are not (Barnard, 2004; Barnard et al., 2000). These are broader than micro-theories, which focus on specific constructs, for example, the relationship between cognitive processes and the symptoms of one specific disorder.
7. A goal-relevant process refers to one that is in pursuit of an individual’s personally important goal; this understanding does not preclude that the process employed may not be the most helpful one to meet that goal. For example, worry can be engaged in because an individual believes that it supports their goal to prepare themselves for a potential threat, but research suggests that repeated worry is not the most effective strategy to achieve this (Francis and Dugas, 2004; Ottaviani et al., 2013).
8. The term “negative” is used here to distinguish emotions (e.g., anger, fear, and depression) from emotions commonly described as pleasant and that do not promote the same tendency toward action (e.g., contentment, equanimity) (Morris et al., 2016; Powers, 2008).
9. The RRS distinguishes between depressive brooding and reflective pondering (Treynor et al., 2003) and these studies generally indicate that the brooding subscale is more strongly associated with switching difficulties (Koster et al., 2013; Whitmer & Banich, 2007).

References

- Abramowitz, J. S., Lackey, G. R., & Wheaton, M. G. (2009). Obsessive-compulsive symptoms: The contribution of obsessional beliefs and experiential avoidance. *Journal of Anxiety Disorders, 23*, 160. doi:10.1016/j.janxdis.2008.06.003
- Aldao, A., & Nolen-Hoeksema, S. (2012). The influence of context on the implementation of adaptive emotion regulation strategies. *Behaviour Research and Therapy, 50*, 493–501. doi:10.1016/j.brat.2012.04.004
- Aldao, A., Nolen-Hoeksema, S., & Schweizer, S. (2010). Emotion-regulation strategies across psychopathology: A meta-analytic review. *Clinical Psychology Review, 30*, 217–237. doi:10.1016/j.cpr.2009.11.004
- Alsawy, S., Mansell, W., Carey, T. A., McEvoy, P., & Tai, S. J. (2014). Science and practice of transdiagnostic CBT: A perceptual control theory (PCT) approach. *International Journal of Cognitive Therapy, 7*, 334–359. doi:10.1521/ijct.2014.7.4.334
- Altamirano, L. J., Miyake, A., & Whitmer, A. J. (2010). When mental inflexibility facilitates executive control beneficial side effects of ruminative tendencies on goal maintenance. *Psychological Science, 21*, 1377–1382. doi:10.1177/0956797610381505
- American Psychiatric Association. (1994). *Diagnostic and Statistical Manual of Mental Disorders* (4th ed.). Washington, DC: American Psychiatric Association.
- Anderluh, M., Tchanturia, K., Rabe-Hesketh, S., Collier, D., & Treasure, J. (2009). Lifetime course of eating disorders: Design and validity testing of a new strategy to define the eating disorders phenotype. *Psychological Medicine, 39*, 105–114. doi:10.1017/S0033291708003292
- Aragues, M., Jurado, R., Quinto, R., & Rubio, G. (2011). Laboratory paradigms of impulsivity and alcohol dependence: A review. *European Addiction Research, 17*, 64–71. doi:10.1159/000321345
- Baer, R. A., Peters, J. R., Eisenlohr-Moul, T. A., Geiger, P. J., & Sauer, S. E. (2012). Emotion-related cognitive processes in borderline personality disorder: A review of the empirical literature. *Clinical Psychology Review, 32*, 359–369. doi:10.1016/j.cpr.2012.03.002
- Bar-Anan, Y., Wilson, T. D., & Gilbert, D. T. (2009). The feeling of uncertainty intensifies affective reactions. *Emotion, 9*, 123. doi:10.1037/a0014607
- Barnard, P. (2004). Bridging between basic theory and clinical practice. *Behaviour Research and Therapy, 42*, 977–1000. doi: http://dx.doi.org/10.1016/j.brat.2004.04.002
- Barnard, P., May, J., Duke, D., & Duce, D. (2000). Systems, interactions, and macrotheory. *ACM Transactions on Computer-Human Interaction (TOCHI), 7*, 222–262. doi: http://dx.doi.org/10.1145/353485.353490
- Bergman, A. J., Nyland, J. E., & Burns, L. R. (2007). Correlates with perfectionism and the utility of a dual

- process model. *Personality and Individual Differences*, 43, 389–399. doi:10.1016/j.paid.2006.12.007
- Bieling, P. J., Israeli, A. L., & Antony, M. M. (2004). Is perfectionism good, bad, or both? Examining models of the perfectionism construct. *Personality and Individual Differences*, 36, 1373–1385. doi:10.1016/S0191-8869(03)00235-6
- Bonanno, G. A., Papa, A., Lalande, K., Westphal, M., & Coifman, K. (2004). The importance of being flexible the ability to both enhance and suppress emotional expression predicts long-term adjustment. *Psychological Science*, 15, 482–487. doi:10.1111/j.0956-7976.2004.00705.x
- Bond, F. W., Hayes, S. C., Baer, R. A., Carpenter, K. M., Guenole, N., Orcutt, H. K., . . . Zettle, R. D. (2011). Preliminary psychometric properties of the Acceptance and Action Questionnaire–II: A revised measure of psychological inflexibility and experiential avoidance. *Behavior Therapy*, 42, 676–688. doi:10.1016/j.beth.2011.03.007
- Boudreaux, M. J., & Ozer, D. J. (2013). Goal conflict, goal striving, and psychological well-being. *Motivation and Emotion*, 37, 433–443. doi:10.1007/s11031-012-9333-2
- Brands, I., Stapert, S., Köhler, S., Wade, D., & van Heugten, C. (2015). Life goal attainment in the adaptation process after acquired brain injury: The influence of self-efficacy and of flexibility and tenacity in goal pursuit. *Clinical Rehabilitation*, 29, 611–622. doi:10.1177/0269215514549484
- Brandtstädter, J., & Renner, G. (1990). Tenacious goal pursuit and flexible goal adjustment: Explication and age-related analysis of assimilative and accommodative strategies of coping. *Psychology and Aging*, 5, 58. doi:10.1037/0882-7974.5.1.58
- Brinker, J. K., Campisi, M., Gibbs, L., & Izzard, R. (2013). Rumination, mood and cognitive performance. *Psychology*, 4, 224. doi:10.4236/psych.2013.43A034
- Buckholtz, J. W., & Meyer-Lindenberg, A. (2012). Psychopathology and the human connectome: Toward a transdiagnostic model of risk for mental illness. *Neuron*, 74, 990–1004. doi:10.1016/j.neuron.2012.06.002
- Buhr, K., & Dugas, M. J. (2009). The role of fear of anxiety and intolerance of uncertainty in worry: An experimental manipulation. *Behaviour Research and Therapy*, 47, 215–223. doi:10.1016/j.brat.2008.12.004
- Carey, T. A., Mansell, W., Tai, S. J., & Turkington, D. (2014). Conflicted control systems: The neural architecture of trauma. *The Lancet Psychiatry*, 1, 316–318. doi:10.1016/S2215-0366(14)70306-2
- Carver, C. S., Johnson, S. L., & Joormann, J. (2008). Serotonergic function, two-mode models of self-regulation, and vulnerability to depression: What depression has in common with impulsive aggression. *Psychological Bulletin*, 134, 912.
- Carver, C. S., Johnson, S. L., & Joormann, J. (2013). Major depressive disorder and impulsive reactivity to emotion: Toward a dual-process view of depression. *British Journal of Clinical Psychology*, 52, 285–299.
- Carver, C. S., & Scheier, M. F. (1998). *On the self-regulation of behavior*. Cambridge, England: Cambridge University Press.
- Carver, C. S., & Scheier, M. F. (2013). Goals and emotion. In M. D. Robinson, E. R. Watkins, & E. Harmon-Jones (Eds.), *Guilford handbook of cognition and emotion* (pp. 176–194). New York, NY: Guilford Press.
- Cheng, C. (2001). Assessing coping flexibility in real-life and laboratory settings: A multimethod approach. *Journal of Personality and Social Psychology*, 80, 814. doi:10.1037//0022-3514.80.5.814
- Cheng, C., Hui, W., & Lam, S. (2000). Perceptual style and behavioral pattern of individuals with functional gastrointestinal disorders. *Health Psychology*, 19, 146. doi:10.1037//0278-6133.19.2.146
- Chown, S. M. (1959). Rigidity: A flexible concept. *Psychological Bulletin*, 56, 195.
- Cohen, J. (1969). *Statistical power analysis for the behavioral sciences*. New York, NY; London, England: Academic Press.
- Cooper, H. (2003). Editorial. *Psychological Bulletin*, 129, 3–9.
- Costa, P. T., & McCrae, R. R. (1992). Normal personality assessment in clinical practice: The NEO personality inventory. *Psychological Assessment*, 4, 5.
- Davis, R. N., & Nolen-Hoeksema, S. (2000). Cognitive inflexibility among ruminators and nonruminators. *Cognitive Therapy and Research*, 24, 699–711. doi:10.1023/A:1005591412406
- Deacon, B. J., Sy, J. T., Lickel, J. J., & Nelson, E. A. (2010). Does the judicious use of safety behaviors improve the efficacy and acceptability of exposure therapy for claustrophobic fear? *Journal of Behavior Therapy and Experimental Psychiatry*, 41, 71–80. doi:10.1016/j.jbtep.2009.10.004
- De Lissnyder, E., Derakshan, N., De Raedt, R., & Koster, E. H. (2011). Depressive symptoms and cognitive control in a mixed antisaccade task: Specific effects of depressive rumination. *Cognition and Emotion*, 25, 886–897. doi:10.1080/02699931.2010.514711
- De Lissnyder, E., Koster, E. H., & De Raedt, R. (2012a). Emotional interference in working memory is related to rumination. *Cognitive Therapy and Research*, 36, 348–357. doi:10.1007/s10608-011-9352-4

- De Lissnyder, E., Koster, E. H., Goubert, L., Onraedt, T., Vanderhasselt, M.-A., & De Raedt, R. (2012b). Cognitive control moderates the association between stress and rumination. *Journal of Behavior Therapy and Experimental Psychiatry*, *43*, 519–525. doi:10.1016/j.jbtep.2011.07.004
- De Lissnyder, E., Koster, E. H. W., Derakshan, N., & De Raedt, R. (2010). The association between depressive symptoms and executive control impairments in response to emotional and non-emotional information. *Cognition and Emotion*, *24*, 264–280. doi:10.1080/02699930903378354
- Dennis, J. P., & Vander Wal, J. S. (2010). The cognitive flexibility inventory: Instrument development and estimates of reliability and validity. *Cognitive Therapy and Research*, *34*, 241–253. doi:10.1007/s10608-009-9276-4
- Deveney, C. M., & Deldin, P. (2006). A preliminary investigation of cognitive flexibility for emotional information in major depressive disorder and non-psychiatric controls. *Emotion*, *6*, 429–437. doi:10.1037/1528-3542.6.3.429
- Dickson, J. M., & MacLeod, A. K. (2004). Approach and avoidance goals and plans: Their relationship to anxiety and depression. *Cognitive Therapy and Research*, *28*, 415–432. doi:10.1023/B:COTR.0000031809.20488.ee
- Di Schiena, R., Luminet, O., Philippot, P., & Douilliez, C. (2012). Adaptive and maladaptive perfectionism in depression: Preliminary evidence on the role of adaptive and maladaptive rumination. *Personality and Individual Differences*, *53*, 774–778. doi: http://dx.doi.org/10.1016/j.paid.2012.05.017
- Dreisbach, G., & Goschke, T. (2004). How positive affect modulates cognitive control: Reduced perseveration at the cost of increased distractibility. *Journal of Experimental Psychology: Learning, Memory, and Cognition*, *30*, 343–353. doi:10.1037/0278-7393.30.2.343
- Dunne, S., Coffey, L., Gallagher, P., & Desmond, D. (2014). “If I can do it I will do it, if I can’t, I can’t”: A study of adaptive self-regulatory strategies following lower limb amputation. *Disability and Rehabilitation*, *36*, 1990–1997. doi:10.3109/09638288.2014.885993
- Egan, S. J., Piek, J., Dyck, M., & Kane, R. (2011). The reliability and validity of the positive and negative perfectionism scale. *Clinical Psychologist*, *15*, 121–132. doi:10.1111/j.1742-9552.2011.00029.x
- Egan, S. J., Piek, J. P., Dyck, M. J., & Rees, C. S. (2007). The role of dichotomous thinking and rigidity in perfectionism. *Behaviour Research and Therapy*, *45*, 1813–1822. doi:10.1016/j.brat.2007.02.002
- Egan, S. J., Wade, T. D., & Shafran, R. (2011). Perfectionism as a transdiagnostic process: A clinical review. *Clinical Psychology Review*, *31*, 203–212. doi:10.1016/j.cpr.2010.04.009
- Ehring, T., & Watkins, E. R. (2008). Repetitive negative thinking as a transdiagnostic process. *International Journal of Cognitive Therapy*, *1*, 192–205. doi:10.1521/ijct.2008.1.3.192
- Einstein, D. A. (2014). Extension of the transdiagnostic model to focus on intolerance of uncertainty: A review of the literature and implications for treatment. *Clinical Psychology: Science and Practice*, *21*, 280–300. doi:10.1111/cpsp.12077
- Emmons, R. A., & King, L. A. (1988). Conflict among personal strivings: Immediate and long-term implications for psychological and physical well-being. *Journal of Personality and Social Psychology*, *54*, 1040. doi:10.1037/0022-3514.54.6.1040
- Emmons, R. A., King, L. A., & Sheldon, K. (1993). Goal conflict and the self-regulation of action. In D. M. Wegner & J. W. Pennebaker (Eds.), *Century psychology series. Handbook of mental control* (pp. 528–551). Englewood Cliffs, NJ: Prentice-Hall, Inc.
- Ersche, K. D., Roiser, J. P., Robbins, T. W., & Sahakian, B. J. (2008). Chronic cocaine but not chronic amphetamine use is associated with perseverative responding in humans. *Psychopharmacology*, *197*, 421–431. doi:10.1007/s00213-007-1051-1
- Evans, J. D. (1996). *Straightforward statistics for the behavioral sciences*. Pacific Grove, CA: Brooks/Cole Publishing Company.
- Eysenck, M. W., & Derakshan, N. (2011). New perspectives in attentional control theory. *Personality and Individual Differences*, *50*, 955–960. doi:10.1016/j.paid.2010.08.019
- Fergus, T. A., & Rowatt, W. C. (2014). Intolerance of uncertainty and personality: Experiential permeability is associated with difficulties tolerating uncertainty. *Personality and Individual Differences*, *58*, 128–131. doi:10.1016/j.paid.2013.10.017
- Ferguson, E., Heckman, J. J., & Corr, P. (2011). Personality and economics: Overview and proposed framework. *Personality and Individual Differences*, *51*, 201–209. doi:10.1016/j.paid.2011.03.030
- Fernandez-Serrano, M. J., Perales, J. C., Moreno-Lopez, L., Perez-Garcia, M., & Verdejo-Garcia, A. (2012). Neuropsychological profiling of impulsivity and compulsivity in cocaine dependent individuals. *Psychopharmacology*, *219*, 673–683. doi:10.1007/s00213-011-2485-z

- Field, A. P. (2005). *Discovering Statistics Using SPSS* (2nd ed.). London, UK: Sage Publications.
- Filoteo, J. V., Paul, E. J., Ashby, F. G., Frank, G. K., Helie, S., Rockwell, R., . . . Kaye, W. H. (2014). Simulating category learning and set shifting deficits in patients weight-restored from anorexia nervosa. *Neuropsychology, 28*, 741–751. doi:10.1037/neu0000055
- Francis, K., & Dugas, M. J. (2004). Assessing positive beliefs about worry: Validation of a structured interview. *Personality and Individual Differences, 37*, 405–415. doi: <http://dx.doi.org/10.1016/j.jpaid.2003.09.012>
- Friedman, N. P., & Miyake, A. (2004). The relations among inhibition and interference control functions: A latent-variable analysis. *Journal of Experimental Psychology: General, 133*, 101. doi:10.1037/0096-3445.133.1.101
- Friedman, N. P., Miyake, A., Corley, R. P., Young, S. E., DeFries, J. C., & Hewitt, J. K. (2006). Not all executive functions are related to intelligence. *Psychological Science, 17*, 172–179. doi:10.1111/j.1467-9280.2006.01681.x
- Friedman, N. P., Miyake, A., Robinson, J. L., & Hewitt, J. K. (2011). Developmental trajectories in toddlers' self-restraint predict individual differences in executive functions 14 years later: A behavioral genetic analysis. *Developmental Psychology, 47*, 1410.
- Friedman, N. P., Miyake, A., Young, S. E., DeFries, J. C., Corley, R. P., & Hewitt, J. K. (2008). Individual differences in executive functions are almost entirely genetic in origin. *Journal of Experimental Psychology: General, 137*, 201.
- Galatzer-Levy, I. R., Burton, C. L., & Bonanno, G. A. (2012). Coping flexibility, potentially traumatic life events, and resilience: A prospective study of college student adjustment. *Journal of Social and Clinical Psychology, 31*, 542–567. doi:10.1521/jscp.2012.31.6.542
- Galimberti, E., Martoni, R. M., Cavallini, M. C., Erzegovesi, S., & Bellodi, L. (2012). Motor inhibition and cognitive flexibility in eating disorder subtypes. *Progress in Neuro-Psychopharmacology and Biological Psychiatry, 36*, 307–312. doi:10.1016/j.pnpbp.2011.10.017
- Gautreau, C. M., Sherry, S. B., Mushquash, A. R., & Stewart, S. H. (2015). Is self-critical perfectionism an antecedent of or a consequence of social anxiety, or both? A 12-month, three-wave longitudinal study. *Personality and Individual Differences, 82*, 125–130.
- Genet, J. J., Malooly, A. M., & Siemer, M. (2013). Flexibility is not always adaptive: Affective flexibility and inflexibility predict rumination use in everyday life. *Cognition and Emotion, 27*, 685–695. doi:10.1080/02699931.2012.733351
- Genet, J. J., & Siemer, M. (2011). Flexible control in processing affective and non-affective material predicts individual differences in trait resilience. *Cognition and Emotion, 25*, 380–388. doi:10.1080/02699931.2010.491647
- Gentes, E. L., & Ruscio, A. M. (2011). A meta-analysis of the relation of intolerance of uncertainty to symptoms of generalized anxiety disorder, major depressive disorder, and obsessive-compulsive disorder. *Clinical Psychology Review, 31*, 923–933. doi:10.1016/j.cpr.2011.05.001
- Geurts, H. M., Corbett, B., & Solomon, M. (2009). The paradox of cognitive flexibility in autism. *Trends in Cognitive Sciences, 13*, 74–82. doi:10.1016/j.tics.2008.11.006
- Gloster, A. T., Klotsche, J., Chaker, S., Hummel, K. V., & Hoyer, J. (2011). Assessing psychological flexibility: What does it add above and beyond existing constructs? *Psychological assessment, 23*, 970. doi: 10.1037/a0024135
- Goschke, T. (2000). Intentional reconfiguration and involuntary persistence in task set switching. In S. Monsell & J. Driver (Eds.), *Control of cognitive processes: Attention and Performance XVIII* (Vol. 18, pp. 331–355). Cambridge, MA: MIT Press.
- Goschke, T. (2014). Dysfunctions of decision-making and cognitive control as transdiagnostic mechanisms of mental disorders: Advances, gaps, and needs in current research. *International Journal of Methods in Psychiatric Research, 23*, 41–57. doi:10.1002/mpr.1410
- Grant, J. E., Potenza, M. N., Weinstein, A., & Gorelick, D. A. (2010). Introduction to behavioral addictions. *The American Journal of Drug and Alcohol Abuse, 36*, 233–241. doi:10.3109/00952990.2010.491884
- Grenier, S., Barrette, A.-M., & Ladouceur, R. (2005). Intolerance of uncertainty and intolerance of ambiguity: Similarities and differences. *Personality and individual differences, 39*, 593–600. doi: <http://dx.doi.org/10.1016/j.jpaid.2005.02.014>
- Grilo, C. M. (2004). Factor structure of DSM-IV criteria for obsessive compulsive personality disorder in patients with binge eating disorder. *Acta Psychiatrica Scandinavica, 109*, 64–69. doi:10.1046/j.0001-690X.2003.00223.x
- Haase, A. M., Prapavessis, H., & Owens, R. G. (2013). Domain-specificity in perfectionism: Variations across domains of life. *Personality and Individual Differences, 55*, 711–715. doi:10.1016/j.jpaid.2013.05.025
- Hamachek, D. E. (1978). Psychodynamics of normal and neurotic perfectionism. *Psychology: A Journal of Human Behavior, 15*, 27–33.

- Hampshire, A., & Owen, A. M. (2006). Fractionating attentional control using event-related fMRI. *Cerebral Cortex*, *16*, 1679–1689. doi:10.1093/cercor/bhj116
- Harvey, A. G., Watkins, E., Mansell, W., & Shafran, R. (2004). *Cognitive behavioural processes across psychological disorders: A transdiagnostic approach to research and treatment*. Oxford, England: Oxford University Press.
- Hashimoto, N., Nakaaki, S., Omori, I. M., Fujioi, J., Noguchi, Y., Murata, Y., . . . Furukawa, T. A. (2011). Distinct neuropsychological profiles of three major symptom dimensions in obsessive-compulsive disorder. *Psychiatry Research*, *187*, 166–173. doi:10.1016/j.psychres.2010.08.001
- Hayes, S. C., Luoma, J. B., Bond, F. W., Masuda, A., & Lillis, J. (2006). Acceptance and commitment therapy: Model, processes and outcomes. *Behaviour Research and Therapy*, *44*, 1–25. doi:10.1016/j.brat.2005.06.006
- Hayes, S. C., Strosahl, K., & Wilson, K. G. (1999). *Acceptance and commitment therapy: An experiential approach to behavior change*. New York, NY; London, England: Guilford Press.
- Helbig-Lang, S., & Petermann, F. (2010). Tolerate or eliminate? A systematic review on the effects of safety behavior across anxiety disorders. *Clinical Psychology: Science and Practice*, *17*, 218–233. doi:10.1111/j.1468-2850.2010.01213.x
- Henselmans, I., Flier, J., van Sonderen, E., Smink, A., Sanderman, R., & Ranchor, A. V. (2011). The tenacious goal pursuit and flexible goal adjustment scales: A validation study. *Psychology and Aging*, *26*, 174. doi:10.1037/a0021536
- Herd, S. A., Hazy, T. E., Chatham, C. H., Brant, A. M., & Friedman, N. P. (2014). A neural network model of individual differences in task switching abilities. *Neuropsychologia*, *62*, 375–389. doi:10.1016/j.neuropsychologia.2014.04.014
- Hertel, P. (2004). Memory for emotional and nonemotional events in depression. In D. Reisberg & P. Hertel (Eds.), *Memory and emotion* (pp. 186–216). New York, NY: Oxford University Press.
- Hinshaw, S. P. (2009). Editorial. *Psychological Bulletin*, *135*, 511–515.
- Hoffman, E. R., Gagne, D. A., Thornton, L. M., Klump, K. L., Brandt, H., Crawford, S., . . . Jones, I. (2012). Understanding the association of impulsivity, obsessions, and compulsions with binge eating and purging behaviours in anorexia nervosa. *European Eating Disorders Review*, *3*, e129–e136. doi:10.1002/erv.2161
- Hofmann, S. G. (2007). Cognitive factors that maintain social anxiety disorder: A comprehensive model and its treatment implications. *Cognitive Behaviour Therapy*, *36*, 193–209. doi:10.1080/16506070701421313
- Hofmann, W., Gawronski, B., Gschwendner, T., Le, H., & Schmitt, M. (2005). A meta-analysis on the correlation between the implicit association test and explicit self-report measures. *Personality and Social Psychology Bulletin*, *31*, 1369–1385. doi:10.1177/0146167205275613
- Hollenstein, T. (2015). This time, it's real: Affective flexibility, time scales, feedback loops, and the regulation of emotion. *Emotion Review*, *7*, 308–315. doi:10.1177/1754073915590621
- Hood, H. K., Antony, M. M., Koerner, N., & Monson, C. M. (2010). Effects of safety behaviors on fear reduction during exposure. *Behaviour Research and Therapy*, *48*, 1161–1169. doi:10.1016/j.brat.2010.08.006
- Ingram, R. E. (1990). Self-focused attention in clinical disorders: Review and a conceptual model. *Psychological Bulletin*, *107*, 156. doi:10.1037/0033-2909.107.2.156
- Johnson, S. L., Carver, C. S., & Joormann, J. (2013). Impulsive responses to emotion as a transdiagnostic vulnerability to internalizing and externalizing symptoms. *Journal of Affective Disorders*, *150*, 872–878. doi:10.1016/j.jad.2013.05.004
- Johnson, S. L., Carver, C. S., Mulé, S., & Joormann, J. (2013). Impulsivity and risk for mania: Towards greater specificity. *Psychology and Psychotherapy: Theory, Research and Practice*, *86*, 401–412.
- Joormann, J. (2006). Differential effects of rumination and dysphoria on the inhibition of irrelevant emotional material: Evidence from a negative priming task. *Cognitive Therapy and Research*, *30*, 149–160. doi:10.1007/s10608-006-9035-8
- Joormann, J., Dkane, M., & Gotlib, I. H. (2006). Adaptive and maladaptive components of rumination? Diagnostic specificity and relation to depressive biases. *Behavior Therapy*, *37*, 269–280. doi:10.1016/j.beth.2006.01.002
- Joormann, J., & Gotlib, I. H. (2008). Updating the contents of working memory in depression: Interference from irrelevant negative material. *Journal of Abnormal Psychology*, *117*, 182. doi:10.1037/0021-843X.117.1.182
- Joormann, J., Levens, S. M., & Gotlib, I. H. (2011). Sticky thoughts depression and rumination are associated with difficulties manipulating emotional material in working memory. *Psychological Science*, *22*, 979–983. doi:10.1177/0956797611415539
- Kanakam, N., Raoult, C., Collier, D., & Treasure, J. (2013). Set shifting and central coherence as neurocognitive endophenotypes in eating disorders: A preliminary investigation in twins. *The World Journal of Biological*

- Psychiatry*, 14, 464–475. doi:10.3109/15622975.2012.665478
- Kashdan, T. B., & Rottenberg, J. (2010). Psychological flexibility as a fundamental aspect of health. *Clinical Psychology Review*, 30, 865–878. doi:10.1016/j.cpr.2010.03.001
- Kehagia, A. A., Murray, G. K., & Robbins, T. W. (2010). Learning and cognitive flexibility: Frontostriatal function and monoaminergic modulation. *Current Opinion in Neurobiology*, 20, 199–204.
- Kelly, N. R., Bulik, C. M., & Mazzeo, S. E. (2013). Executive functioning and behavioral impulsivity of young women who binge eat. *International Journal of Eating Disorders*, 46, 127–139. doi:10.1002/eat.22096
- Kelly, R. E., Mansell, W., & Wood, A. M. (2015). Goal conflict and well-being: A review and hierarchical model of goal conflict, ambivalence, self-discrepancy and self-concordance. *Personality and Individual Differences*, 85, 212–229. doi:10.1016/j.paid.2015.05.011
- Kelly, R. E., Wood, A. M., & Mansell, W. (2012). Flexible and tenacious goal pursuit lead to improving well-being in an aging population: A ten-year cohort study. *International Psychogeriatrics*, 1, 1–9. doi:10.1017/S1041610212001391
- Kingston, R. E., Watkins, E. R., & O'Mahen, H. A. (2013). An integrated examination of risk factors for repetitive negative thought. *Journal of Experimental Psychopathology*, 4, 161–181.
- Koch, I., Gade, M., Schuch, S., & Philipp, A. M. (2010). The role of inhibition in task switching: A review. *Psychonomic Bulletin and Review*, 17, 1–14. doi:10.3758/PBR.17.1.1
- Koster, E. H. W., De Lissnyder, E., & De Raedt, R. (2013). Rumination is characterized by valence-specific impairments in switching of attention. *Acta Psychologica*, 144, 563–570. doi:10.1016/j.actpsy.2013.09.008
- Koster, E. H. W., De Lissnyder, E., Derakshan, N., & De Raedt, R. (2011). Understanding depressive rumination from a cognitive science perspective: The impaired disengagement hypothesis. *Clinical Psychology Review*, 31, 138–145. doi:10.1016/j.cpr.2010.08.005
- Kotov, R., Gamez, W., Schmidt, F., & Watson, D. (2010). Linking “big” personality traits to anxiety, depressive, and substance use disorders: A meta-analysis. *Psychological Bulletin*, 5, 768–821.
- Kumbhani, S. R., Roth, R. M., Kruck, C. L., Flashman, L. A., & McAllister, T. W. (2010). Nonclinical obsessive-compulsive symptoms and executive functions in schizophrenia. *The Journal of Neuropsychiatry and Clinical Neurosciences*, 22, 304–312. doi:10.1176/appi.neuropsych.22.3.304
- Lawrence, N. S., Wooderson, S., Mataix-Cols, D., David, R., Speckens, A., & Phillips, M. L. (2006). Decision making and set shifting impairments are associated with distinct symptom dimensions in obsessive-compulsive disorder. *Neuropsychology*, 20, 409–419. doi:10.1037/0894-4105.20.4.409
- Leyro, T. M., Berenz, E. C., Brandt, C. P., Smits, J. A., & Zvolensky, M. J. (2012). Evaluation of perseveration in relation to panic-relevant responding: An initial test. *Behavioural and Cognitive Psychotherapy*, 40, 205. doi:10.1017/S135246581100066X
- Liberati, A., Altman, D. G., Tetzlaff, J., Mulrow, C., Gøtzsche, P. C., Ioannidis, J. P., . . . Moher, D. (2009). The PRISMA statement for reporting systematic reviews and meta-analyses of studies that evaluate health care interventions: Explanation and elaboration. *PLOS Medicine*, 151, e1000100. doi:10.1371/journal.pmed.1000100
- Lindner, S. E., Fichter, M. M., & Quadflieg, N. (2014). Set-shifting and its relation to clinical and personality variables in full recovery of anorexia nervosa. *European Eating Disorders Review*, 22, 252–259. doi:10.1002/erv.2293
- Mackinnon, S. P., Battista, S. R., Sherry, S. B., & Stewart, S. H. (2014). Perfectionistic self-presentation predicts social anxiety using daily diary methods. *Personality and Individual Differences*, 56, 143–148.
- Malouff, J. M., Thorsteinsson, E. B., & Schutte, N. S. (2005). The relationship between the five-factor model of personality and symptoms of clinical disorders: A meta-analysis. *Journal of Psychopathology and Behavioral Assessment*, 27, 101–114.
- Mandel, T., Dunkley, D. M., & Moroz, M. (2015). Self-critical perfectionism and depressive and anxious symptoms over 4 years: The mediating role of daily stress reactivity. *Journal of Counseling Psychology*, 62, 703.
- Manning, V., Teoh, H. C., Guo, S., Wong, K. E., & Li, T.K. (2013). Executive functioning in Asian pathological gamblers. *International Gambling Studies*, 13, 403–416. doi: http://dx.doi.org/10.1080/14459795.2013.829516
- Mansell, W. (2005). Control theory and psychopathology: An integrative approach. *Psychology and Psychotherapy-Theory Research and Practice*, 78, 141–178. doi:10.1348/147608304x21400
- Mansell, W. (2012). Working with comorbidity in CBT. In W. Dryden & R. Branch (Eds.), *The CBT handbook*. Los Angeles, CA: Sage.
- Mansell, W., & Carey, T. A. (2009). A century of psychology and psychotherapy: Is an understanding of ‘control’

- the missing link between theory, research, and practice? *Psychology and Psychotherapy-Theory Research and Practice*, 82, 337–353. doi:10.1348/147608309x432526
- Marien, H., Aarts, H., & Custers, R. (2012). Being flexible or rigid in goal-directed behavior: When positive affect implicitly motivates the pursuit of goals or means. *Journal of Experimental Social Psychology*, 48, 277–283. doi:10.1016/j.jesp.2011.08.013
- Marken, R. S., & Mansell, W. (2013). Perceptual control as a unifying concept in psychology. *Review of General Psychology*, 17, 190–195. doi:10.1037/a0032933
- Martin, L. L., Shrira, I., & Startup, H. M. (2004). Rumination as a function of goal progress, stop rules, and cerebral lateralization. In C. Papageorgiou & A. Wells (Eds.), *Depressive rumination. nature, theory and treatment*. Chichester, England: John Wiley & Sons Ltd.
- Martin, M. M., & Rubin, R. B. (1995). A new measure of cognitive flexibility. *Psychological Reports*, 76, 623–626. doi:10.1037/0096-3445.129.1.4
- McEvoy, P. M., Watson, H., Watkins, E. R., & Nathan, P. (2013). The relationship between worry, rumination, and comorbidity: Evidence for repetitive negative thinking as a transdiagnostic construct. *Journal of Affective Disorders*, 151, 313–320. doi:10.1016/j.jad.2013.06.014
- McMillan, S. G., Rees, C. S., & Pestell, C. (2013). An investigation of executive functioning, attention and working memory in compulsive hoarding. *Behavioural and Cognitive Psychotherapy*, 41, 610–625. doi:10.1017/S1352465812000835
- Meeten, F., & Davey, G. C. (2011). Mood-as-input hypothesis and perseverative psychopathologies. *Clinical Psychology Review*, 31, 1259–1275. doi:10.1016/j.cpr.2011.08.002
- Meiran, N. (2010). *Task switching: Mechanisms underlying rigid vs. flexible self control in society, mind, and brain* (pp. 202–220). New York, NY: Oxford University Press.
- Meiran, N., Diamond, G. M., Toder, D., & Nemets, B. (2011). Cognitive rigidity in unipolar depression and obsessive compulsive disorder: Examination of task switching, Stroop, working memory updating and post-conflict adaptation. *Psychiatry Research*, 185, 149–156. doi:10.1016/j.psychres.2010.04.044
- Meiran, N., Kessler, Y., & Adi-Japha, E. (2008). Control by action representation and input selection (CARIS): A theoretical framework for task switching. *Psychological Research*, 72, 473–500. doi:10.1007/s00426-008-0136-8
- Meresko, R., Rubin, M., Shontz, F. C., & Morrow, W. R. (1954). Rigidity of attitudes regarding personal habits and its ideological correlates. *The Journal of Abnormal and Social Psychology*, 49, 89.
- Milosevic, I., & Radomsky, A. S. (2008). Safety behaviour does not necessarily interfere with exposure therapy. *Behaviour Research and Therapy*, 46, 1111–1118. doi:10.1016/j.brat.2008.05.011
- Miranda, R., Valderrama, J., Tsypes, A., Gadol, E., & Gallagher, M. (2013). Cognitive inflexibility and suicidal ideation: Mediating role of brooding and hopelessness. *Psychiatry Research*, 210, 174–181. doi:10.1016/j.psychres.2013.02.033
- Mischel, W., & Shoda, Y. (1995). A cognitive-affective system theory of personality: Reconceptualizing situations, dispositions, dynamics, and invariance in personality structure. *Psychological Review*, 102, 246. doi:10.1037/0033-295X.102.2.246
- Miyake, A., & Friedman, N. P. (2012). The nature and organization of individual differences in executive functions four general conclusions. *Current Directions in Psychological Science*, 21, 8–14. doi:10.1177/0963721411429458
- Miyake, A., Friedman, N. P., Emerson, M. J., Witzki, A. H., Howerter, A., & Wager, T. D. (2000). The unity and diversity of executive functions and their contributions to complex “frontal lobe” tasks: A latent variable analysis. *Cognitive Psychology*, 41, 49–100. doi:10.1006/cogp.1999.0734
- Moberly, N. J., & Watkins, E. R. (2010). Negative affect and ruminative self-focus during everyday goal pursuit. *Cognition and Emotion*, 24, 729–739.
- Moeller, F. G., Barratt, E. S., Dougherty, D. M., Schmitz, J. M., & Swann, A. C. (2001). Psychiatric aspects of impulsivity. *American journal of psychiatry*, 158, 1783–1793. doi:10.1176/appi.ajp.158.11.1783
- Moher, D., Liberati, A., Tetzlaff, J., & Altman, D. G. (2009). Preferred reporting items for systematic reviews and meta-analyses: The PRISMA statement. *Annals of Internal Medicine*, 151, 264–269. doi:10.1016/j.jclinepi.2009.06.005
- Morris, L., Mansell, W., & McEvoy, P. (2016). The take control course: Conceptual rationale for the development of a transdiagnostic group for common mental health problems. *Frontiers in Psychology*, 7, 99. doi:10.3389/fpsyg.2016.00099
- Morris, S. E., & Cuthbert, B. N. (2012). Research domain criteria: Cognitive systems, neural circuits, and dimensions of behavior. *Dialogues in Clinical Neuroscience*, 14, 29.
- Mushquash, A. R., & Sherry, S. B. (2012). Understanding the socially prescribed perfectionist’s cycle of self-defeat: A 7-day, 14-occasion daily diary study. *Journal of Research in Personality*, 46, 700–709. doi:10.1016/j.jrp.2012.08.006

- Naylor, H., Mountford, V., & Brown, G. (2011). Beliefs about excessive exercise in eating disorders: The role of obsessions and compulsions. *European Eating Disorders Review, 19*, 226–236. doi:10.1002/erv.1110
- Nolen-Hoeksema, S., & Morrow, J. (1991). A prospective study of depression and posttraumatic stress symptoms after a natural disaster: The 1989 Loma Prieta earthquake. *Journal of Personality and Social Psychology, 61*, 115. doi:10.1037/0022-3514.61.1.115
- Nolen-Hoeksema, S., & Watkins, E. R. (2011). A heuristic for developing transdiagnostic models of psychopathology explaining multifinality and divergent trajectories. *Perspectives on Psychological Science, 6*, 589–609. doi:10.1177/1745691611419672
- Nolen-Hoeksema, S., Wisco, B. E., & Lyubomirsky, S. (2008). Rethinking rumination. *Perspectives on Psychological Science, 3*, 400–424. doi:10.1111/j.1745-6924.2008.00088.x
- Ottaviani, C., Shapiro, D., & Couyoumdjian, A. (2013). Flexibility as the key for somatic health: From mind wandering to perseverative cognition. *Biological Psychology, 94*, 38–43. doi:10.1016/j.biopsycho.2013.05.003
- Owens, M., & Derakshan, N. (2013). The effects of dysphoria and rumination on cognitive flexibility and task selection. *Acta Psychologica, 142*, 323–331. doi:10.1016/j.actpsy.2013.01.008
- Owens, R. G., & Slade, P. D. (2008). So perfect it's positively harmful? Reflections on the adaptiveness and maladaptiveness of positive and negative perfectionism. *Behavior Modification, 32*, 928–937. doi:10.1177/0145445508319667
- Philippot, P., & Brutoux, F. (2008). Induced rumination dampens executive processes in dysphoric young adults. *Journal of Behavior Therapy and Experimental Psychiatry, 39*, 219–227. doi:10.1016/j.jbtep.2007.07.001
- Plessow, F., Fischer, R., Kirschbaum, C., & Goschke, T. (2011). Inflexibly focused under stress: Acute psychosocial stress increases shielding of action goals at the expense of reduced cognitive flexibility with increasing time lag to the stressor. *Journal of Cognitive Neuroscience, 23*, 3218–3227. doi:10.1162/jocn_a_00024
- Powers, W. T. (1973). *Behavior: The control of perception*. Chicago, IL: Aldine.
- Powers, W. T. (2005). *Behavior: The Control of Perception*. Carmel, IN: Benchmark Press.
- Powers, W. T. (2008). On emotions and PCT: A brief overview. http://www.livingcontrolsystems.com/intro_papers/on_emotions.pdf.
- Powers, W. T., Abbott, B., Carey, T. A., Goldstein, D. M., Mansell, W., Marken, R. S., . . . Taylor, M. (2011). Perceptual Control Theory: A Model for Understanding the Mechanisms and Phenomena of Control. Retrieved from: <http://www.pctweb.org/PCTunderstanding-2.pdf>
- Rachman, S., Radomsky, A. S., & Shafran, R. (2008). Safety behaviour: A reconsideration. *Behaviour Research and Therapy, 46*, 163–173. doi:10.1016/j.brat.2007.11.008
- Rachman, S., Shafran, R., Radomsky, A. S., & Zysk, E. (2011). Reducing contamination by exposure plus safety behaviour. *Journal of Behavior Therapy and Experimental Psychiatry, 42*, 397–404. doi:10.1016/j.jbtep.2011.02.010
- Randles, D., Flett, G. L., Nash, K. A., McGregor, I. D., & Hewitt, P. L. (2010). Dimensions of perfectionism, behavioral inhibition, and rumination. *Personality and Individual Differences, 49*, 83–87. doi: <http://dx.doi.org/10.1016/j.paid.2010.03.002>
- Rawal, A., Park, R. J., & Williams, J. M. G. (2010). Rumination, experiential avoidance, and dysfunctional thinking in eating disorders. *Behaviour Research and Therapy, 48*, 851–859. doi:10.1016/j.brat.2010.05.009
- Remijnse, P. L., van den Heuvel, O. A., Nielen, M. M., Vriend, C., Hendriks, G.-J., Hoogendijk, W. J. G., . . . Veltman, D. J. (2013). Cognitive inflexibility in obsessive-compulsive disorder and major depression is associated with distinct neural correlates. *PLoS One, 8*, e59600.
- Richardson, J. T. (2011). Eta squared and partial eta squared as measures of effect size in educational research. *Educational Research Review, 6*, 135–147. doi:10.1016/j.edurev.2010.12.001
- Robbins, T. W., Gillan, C. M., Smith, D. G., de Wit, S., & Ersche, K. D. (2012). Neurocognitive endophenotypes of impulsivity and compulsivity: Towards dimensional psychiatry. *Trends in Cognitive Sciences, 16*, 81–91.
- Roberts, B. W. (2009). Back to the future: Personality and assessment and personality development. *Journal of Research in Personality, 43*, 137–145. doi:10.1016/j.jrp.2008.12.015145.
- Roberts, H., Watkins, E. R., & Wills, A. J. (2013). Cueing an unresolved personal goal causes persistent ruminative self-focus: An experimental evaluation of control theories of rumination. *Journal of Behavior Therapy and Experimental Psychiatry, 44*, 449–455. doi:10.1016/j.jbtep.2013.05.004
- Roberts, M. E., Tchanturia, K., Stahl, D., Southgate, L., & Treasure, J. (2007). A systematic review and meta-analysis of set-shifting ability in eating disorders. *Psychological Medicine, 37*, 1075–1084. doi:10.1017/S0033291707009877

- Robinson, L. J., Thompson, J. M., Gallagher, P., Goswami, U., Young, A. H., Ferrier, I. N., & Moore, P. B. (2006). A meta-analysis of cognitive deficits in euthymic patients with bipolar disorder. *Journal of Affective Disorders, 93*, 105–116. doi:10.1016/j.jad.2006.02.016
- Robinson, M. D., Ode, S., & Hilmert, C. J. (2011). Regulated and unregulated forms of cortisol reactivity: A dual vulnerability model. *Psychosomatic Medicine, 73*, 250–256. doi:10.1097/PSY.0b013e3182099deb
- Robinson, M. D., Pearce, E. A., Engel, S. G., & Wonderlich, S. A. (2009). Cognitive control moderates relations between impulsivity and bulimic symptoms. *Cognitive Therapy and Research, 33*, 356–367. doi:10.1007/s10608-008-9192-z
- Rössler, W. (2013). What is normal? The impact of psychiatric classification on mental health practice and research. *Frontiers in Public Health, 1*, 68. doi:10.3389/fpubh.2013.00068
- Salgado, J. V., Malloy-Diniz, L. F., Campos, V. R., Abrantes, S. S. C., Fuentes, D., Bechara, A., & Correa, H. (2009). Neuropsychological assessment of impulsive behavior in abstinent alcohol-dependent subjects. *Revista Brasileira de Psiquiatria, 31*, 4–9. doi:10.1590/S1516-44462009000100003
- Salkovskis, P. M. (1991). The importance of behaviour in the maintenance of anxiety and panic: A cognitive account. *Behavioural Psychotherapy, 19*, 6–19. doi:10.1017/S0141347300011472
- Schaie, K. W., Dutta, R., & Willis, S. L. (1991). Relationship between rigidity-flexibility and cognitive abilities in adulthood. *Psychology and Aging, 6*, 371. doi:10.1037/0882-7974.6.3.371
- Schirmbeck, F., Rausch, F., Englisch, S., Eifler, S., Esslinger, C., Meyer-Lindenberg, A., & Zink, M. (2013). Stable cognitive deficits in schizophrenia patients with comorbid obsessive-compulsive symptoms: A 12-month longitudinal study. *Schizophrenia Bulletin, 39*, 1261–1271. doi:10.1093/schbul/sbs123
- Schultz, P., & Searleman, A. (2002). Rigidity of thought and behavior: 100 years of research. *Genetic, Social, and General Psychology Monographs, 128*, 165–207.
- Serpell, L., Waller, G., Fearon, P., & Meyer, C. (2009). The roles of persistence and perseveration in psychopathology. *Behavior Therapy, 40*, 260–271. doi:10.1016/j.beth.2008.07.001
- Shafran, R., Cooper, Z., & Fairburn, C. G. (2002). Clinical perfectionism: A cognitive-behavioural analysis. *Behaviour Research and Therapy, 40*, 773–791. doi:10.1016/S0005-7967(01)00059-6
- Shapiro, S. L., Carlson, L. E., Astin, J. A., & Freedman, B. (2006). Mechanisms of mindfulness. *Journal of Clinical Psychology, 62*, 373–386. doi:10.1002/jclp.20237
- Sherry, S. B., Richards, J. E., Sherry, D. L., & Stewart, S. H. (2014). Self-critical perfectionism is a vulnerability factor for depression but not anxiety: A 12-month, 3-wave longitudinal study. *Journal of Research in Personality, 52*, 1–5.
- Short, M. M., Mushquash, A. R., & Sherry, S. B. (2013). Perseveration moderates the relationship between perfectionism and binge eating: A multi-method daily diary study. *Eating Behaviors, 14*, 394–396. doi:10.1016/j.eatbeh.2013.06.001
- Snyder, H. R. (2013). Major depressive disorder is associated with broad impairments on neuropsychological measures of executive function: A meta-analysis and review. *Psychological Bulletin, 139*, 81. doi:10.1037/a0028727
- Snyder, H. R., Kaiser, R. H., Warren, S. L., & Heller, W. (2014). Obsessive-compulsive disorder is associated with broad impairments in executive function a meta-analysis. *Clinical Psychological Science, 3*, 301–330.
- Snyder, H. R., Miyake, A., & Hankin, B. L. (2015). Advancing understanding of executive function impairments and psychopathology: Bridging the gap between clinical and cognitive approaches. *Frontiers in Psychology, 6*, 328. doi:10.3389/fpsyg.2015.00328
- Steinmetz, J.-P., Loarer, E., & Houssemand, C. (2011). Rigidity of attitudes and behaviors: A study on the validity of the concept. *Individual Differences Research, 9*, 84–106.
- Stewin, L. (1983). The concept of rigidity: An enigma. *International Journal for the Advancement of Counseling, 6*, 227–232. doi:10.1007/BF00124273
- Sweitzer, M. M., Allen, P. A., & Kaut, K. P. (2008). Relation of individual differences in impulsivity to nonclinical emotional decision making. *Journal of the International Neuropsychological Society, 14*, 878–882. doi:10.1017/S1355617708080934
- Taylor, S. (2011). Etiology of obsessions and compulsions: A meta-analysis and narrative review of twin studies. *Clinical Psychology Review, 31*, 1361–1372. doi:10.1016/j.cpr.2011.09.008
- Tchanturia, K., Anderluh, M. B., Morris, R. G., Rabe-Hesketh, S., Collier, D. A., Sanchez, P., & Treasure, J. L. (2004). Cognitive flexibility in anorexia nervosa and bulimia nervosa. *Journal of the International Neuropsychological Society, 10*, 513–520. doi:10.1017/S1355617704104086
- Tchanturia, K., Morris, R., Anderluh, M., Collier, D., Nikolaou, V., & Treasure, J. (2004). Set shifting in anorexia

- nervosa: An examination before and after weight gain, in full recovery and relationship to childhood and adult OCPD traits. *Journal of Psychiatric Research*, 38, 545–552. doi:10.1017/S1355617704104086
- Teachman, B. A., Joormann, J., Steinman, S. A., & Gotlib, I. H. (2012). Automaticity in anxiety disorders and major depressive disorder. *Clinical Psychology Review*, 32, 575–603. doi:10.1016/j.cpr.2012.06.004
- Treynor, W., Gonzalez, R., & Nolen-Hoeksema, S. (2003). Rumination reconsidered: A psychometric analysis. *Cognitive Therapy and Research*, 27, 247–259. doi:10.1023/A:1023910315561
- Van den Broek, M., & Bradshaw, C. (1993). An investigation of the relationship between perseveration and impulsiveness. *Personality and Individual Differences*, 14, 531–534. doi:10.1016/0191-8869(93)90145-S
- van Holst, R. J., van den Brink, W., Veltman, D. J., & Goudriaan, A. E. (2010). Why gamblers fail to win: A review of cognitive and neuroimaging findings in pathological gambling. *Neuroscience and Biobehavioral Reviews*, 34, 87–107. doi:10.1016/j.neubiorev.2009.07.007
- Varese, F., Mansell, W., & Tai, S. J. (2017). What is distressing about auditory verbal hallucinations? The contribution of goal interference and goal facilitation. *Psychology and Psychotherapy: Theory, Research and Practice*, 90, 720–734.
- Verdejo-García, A., Lawrence, A. J., & Clark, L. (2008). Impulsivity as a vulnerability marker for substance-use disorders: Review of findings from high-risk research, problem gamblers and genetic association studies. *Neuroscience and Biobehavioral Reviews*, 32, 777–810. doi:10.1016/j.neubiorev.2007.11.003
- Waller, G., Shaw, T., Meyer, C., Haslam, M., Lawson, R., & Serpell, L. (2012). Persistence, perseveration, and perfectionism in the eating disorders. *Behavioural and Cognitive Psychotherapy*, 40, 462–473. doi:10.1017/S135246581200015X
- Wareham, J. D., & Potenza, M. N. (2010). Pathological gambling and substance use disorders. *The American Journal of Drug and Alcohol Abuse*, 36, 242–247. doi:10.3109/00952991003721118
- Watkins, E. (2004). Appraisals and strategies associated with rumination and worry. *Personality and Individual Differences*, 37, 679–694.
- Watkins, E. (2008). Constructive and unconstructive repetitive thought. *Psychological Bulletin*, 134, 163. doi:10.1037/0033-2909.134.2.163
- Watkins, E. (2015). An alternative transdiagnostic mechanistic approach to affective disorders illustrated with research from clinical psychology. *Emotion Review*, 7, 163–167.
- Watkins, E., & Moulds, M. (2005). Positive beliefs about rumination in depression—a replication and extension. *Personality and Individual Differences*, 39, 73–82. doi:10.1016/j.paid.2004.12.006
- Watkins, E., & Nolen-Hoeksema, S. (2014). A habit-goal framework of depressive rumination. *Journal of Abnormal Psychology*, 123, 24. doi:10.1037/a0035540
- Westphal, M., Seivert, N. H., & Bonanno, G. A. (2010). Expressive flexibility. *Emotion*, 10, 92. doi:10.1037/a0018420
- Wetterneck, C. T., Little, T. E., Chasson, G. S., Smith, A. H., Hart, J. M., Stanley, M. A., & Bjorgvinsson, T. (2011). Obsessive-compulsive personality traits: How are they related to OCD severity? *Journal of Anxiety Disorders*, 25, 1024–1031. doi:10.1016/j.janxdis.2011.06.011
- Whitmer, A. J., & Banich, M. T. (2007). Inhibition versus switching deficits in different forms of rumination. *Psychological Science*, 18, 546–553. doi:10.1111/j.1467-9280.2007.01936.x
- Whitmer, A. J., & Gotlib, I. H. (2012). Switching and backward inhibition in major depressive disorder: The role of rumination. *Journal of Abnormal Psychology*, 121, 570–578. doi:10.1037/a0027474
- Wildes, J. E., Forbes, E. E., & Marcus, M. D. (2014). Advancing research on cognitive flexibility in eating disorders: The importance of distinguishing attentional set-shifting and reversal learning. *International Journal of Eating Disorders*, 47, 227–230. doi:10.1002/eat.22243
- Wrosch, C., Scheier, M. F., & Miller, G. E. (2013). Goal adjustment capacities, subjective well-being, and physical health. *Social and Personality Psychology Compass*, 7, 847–860. doi:10.1111/spc3.12074
- Zakzanis, K. K., Campbell, Z., & Polsinelli, A. (2010). Quantitative evidence for distinct cognitive impairment in anorexia nervosa and bulimia nervosa. *Journal of Neuropsychology*, 4, 89–106. doi:10.1348/174866409X459674
- Zetsche, U., & Joormann, J. (2011). Components of interference control predict depressive symptoms and rumination cross-sectionally and at six months follow-up. *Journal of Behavior Therapy and Experimental Psychiatry*, 42, 65–73. doi:10.1016/j.jbtep.2010.06.001
- Zohar, A. H., LaBuda, M., & Moschel-Ravid, O. (1995). Obsessive-compulsive behaviors and cognitive functioning: A study of compulsivity, frame shifting and type A activity patterns in a normal population. *Neuropsychiatry, Neuropsychology, and Behavioral Neurology*, 8, 163–167.

Appendix A

The recommendations in the PRISMA statement for reporting the flow of information through the different phases were followed (Liberati et al., 2009; Moher et al., 2009). The PRISMA statement includes a 27-item checklist of items to include in systematic reviews, which includes items related to all sections of the review (abstract, introduction, etc.) (Moher et al., 2009). Of the 27 items recommended, 22 items were incorporated into the review, as relevant to the focus of the review. For example, the introduction described the rationale for the review in the context of what is already known. The items, or elements of items, that were not incorporated were generally (with one exception) excluded because they were not relevant to either the focus or the methodological design of the review; for example, it was not relevant to include the details of which interventions were included, as the review does not examine intervention studies. Items that were not included were number five, which pertained to protocol registration, as the protocol was not registered and is detailed within the current review rather than elsewhere. Items 15 and 22 were not included as they relate to analyzing risk of bias across studies and the authors are not aware of any methods of doing this without first conducting a meta-analysis. Items 16 and 23 pertain to additional analyses and were not reported, as it was not appropriate to do sensitivity, subgroup, or meta-regression analyses because the review was not a meta-analysis.

Assessment of study quality

One author conducted all study selection and risk of bias assessments (unblinded assessments). Although a number of quality assessment tools are available, the PRISMA statement cautions against using these (Liberati et al., 2009). Component-based approaches are recommended (Liberati et al., 2009). The components focused on in order to assess quality in the current review were as follows:

- **Sample size:** Ideally, studies would report results of an a priori power calculation demonstrating the study had sufficient sample size. However, very few studies did and so sample size is judged using “rules of thumb,” but it is recognized that such approaches are oversimplifications (Field, 2005).
- **Measurement of relevant constructs.**
- **Design/statistical method,** for example, lack of appropriate controls for factors that had been

demonstrated to affect relationships of interest and use of randomization.

- **Generalizability:** Whether the population is clinical or nonclinical. If multiple appropriate measures were used to measure the same construct, this was considered to provide additional generalizability.

Appendix B

Preliminary search terms

Flexibility or rigidity AND. Thinking processes (all-or-nothing thinking/all adj nothing, black-or-white, black adj white, dichotomous thinking), selective attention/attentional bias, attentional avoidance, selective memory, interpretation reasoning (interpretati* bias), expectation reasoning (reasoning bias and expectancy bias), emotional reasoning, avoidance behavior, safety behavior, experiential avoidance, pessimistic attributional style (negative attributional style), intolerance uncertainty, intolerance ambiguity, worry, rumination (ruminati*), impulsivity (impulsiv*), compulsivity (compulsiv*), and perfectionism (perfectioni*).

Final search terms

The search strategy used was to run an abstract search for pairs of search terms using a maintenance process AND a search term related to rigidity or flexibility (detailed below):

Selective attention/attentional bias, thinking processes (all-or-nothing thinking/all adj nothing, black-or-white, black adj white, and dichotomous thinking), rumination (ruminati*), worry, perfectionism (perfectioni*), intolerance of ambiguity, compulsivity (compulsiv*), and impulsivity (impulsiv*).

Rigidity, flexib*, flexibility, cognitive inflexibility, set-shifting, set-switching, task-shifting, task-switching, cognitive switching, and perseveration/perseverative (perseverat*).

Author biographies

Lydia Morris is a clinical psychologist who has extensive experience of working in mental health primary care contexts. She has been focusing upon transdiagnostic research for the past 5-years.

Warren Mansell is a clinical psychologist. He is a Reader at the University of Manchester and a highly regarded researcher, who has published extensively on transdiagnostic psychological approaches.