



Detecting the Shape of Anisotropic Gold Nanoparticles in Dispersion With Single Particle Extinction and Scattering

Journal:	<i>Nanoscale</i>
Manuscript ID	NR-ART-11-2016-008977.R1
Article Type:	Paper
Date Submitted by the Author:	17-Dec-2016
Complete List of Authors:	<p>Potenza, M. A. C.; Univ Milan, Physics Krpetic, Zeljka; University of Salford, School of Environment and Life Sciences Sanvito, Tiziano; EOS S.r.l., Cai, Qi; University College Dublin, School of Chemistry and Chemical Biology Monopoli, Marco; CBNI, UCD, SCCB de Araújo, João; Universidade Federal do Rio Grande do Norte, d. Departamento de Física Teórica e Experimental Cella, Claudia; EOS S.r.l. Boselli, Luca; University College Dublin, School of Chemistry and Chemical Biology Castagnola, Valentina; University College Dublin Milani, Paolo; Universita' di Milano, Physics Department Dawson, Kenneth; University College Dublin, School of Chemistry and Chemical Biology</p>



Nanoscale

Full Paper

Detecting the Shape of Anisotropic Gold Nanoparticles in Dispersion With Single Particle Extinction and Scattering

M. A. C. Potenza,^{a,‡} Ž. Krpetić,^{b,c,‡} T. Sanvito,^{d,‡} Q. Cai,^b M. Monopoli,^b J. M. de Araújo,^{b,e} C. Cella,^d L. Boselli,^b V. Castagnola,^b P. Milani^{*a} and K. A. Dawson^{*b}

,Received 00th January 20xx,
Accepted 00th January 20xx

DOI: 10.1039/x0xx00000x

www.rsc.org/

The shape and size of nanoparticles are important parameters affecting the biodistribution, bioactivity, and toxicity. The high-throughput characterisation of nanoparticle shape in the dispersion is a fundamental prerequisite for realistic *in vitro* and *in vivo* evaluation, however, with routinely available bench-top optical characterisation techniques, it remains a challenging task. Herein, we demonstrate the efficacy of Single Particle Extinction and Scattering (SPES) technique for the *in situ* detection of the shape of nanoparticles in dispersion, applied to a small library of anisotropic gold particles, with potential developments of in-line detection. The use of SPES paves the way to the routine quantitative analysis of nanoparticles dispersed in biologically relevant fluids, which is of importance for the nanosafety assessment and any *in vitro* and *in vivo* administration of nanomaterials.

Introduction

Nanoparticle design aimed for applications in nanomedicine is constantly introducing new complex and often multicomponent nanoparticles that require advanced characterisation techniques to keep up with the technological advances.^{1, 2} The evaluation of the biological responses, pharmacokinetics and, in general, the *in vitro* and *in vivo* characterisation for the assessment of nanosafety and efficacy behaviour of nanoparticles (NPs) are the key enabling factors for the development of reliable nanoparticle-based diagnostic,

therapeutic tools and toxicology.^{3, 4} The characterisation of nanoparticle interactions in contact with complex biological entities must take into account the behaviour of nanosized objects in different media as the nanoparticles be affected by a number of biomolecules present therein, which can significantly influence their aggregation state and altering the dispersion quality, overall shape, bioavailability, and efficacy in case of diagnostic or therapeutic applications.⁵

Physico chemical properties of nanoparticles influence their toxicological behaviour but the link between the two is far from being completely understood. Due to the high surface-to-volume ratio, the surface of nanoparticles is very reactive and results in complex and dynamic interactions with the surrounding media.⁶ In the case of nanoparticles dispersed in complex biological fluids, particle low energy state is reached, in some cases, by adsorbing biomolecules from the surrounding medium with the formation of a dynamic/static biomolecular corona.⁶ The adsorption is dependent on the local properties of nanoparticles in dispersion *i.e.* particle size, core material, surface chemistry which can affect the surface charge, curvature and ultimately the particle shape.⁷⁻⁹ Besides surface chemistry, nanoparticle size and shape are key parameters affecting the biological response, *i.e.* rate of the cellular uptake, biodistribution, bioactivity, therapeutic efficacy and toxicity.^{10, 11} This highlights the importance of accurate determination of geometry, morphology and rheology of nanoparticles.¹²

Before using nanoparticle dispersions for biological applications, typically the number of parameters, such as particle size and shape distribution, morphology, the stability

^a CIMAINA and Dipartimento di Fisica, Università degli Studi di Milano, Via Celoria, 16, 20133 Milano, Italy.

^b Centre for BioNano Interactions, School of Chemistry and Chemical Biology, University College Dublin, Belfield, Dublin 4, Dublin, Ireland.

^c School of Environment and Life Sciences, University of Salford, M5 4WT Salford, United Kingdom

^d EOS srl, Viale Ortles 22/4, 20139 Milano, Italy.

^e Departamento de Física Teórica e Experimental, Universidade Federal do Rio Grande do Norte, 59078-970, Natal, RN, Brazil

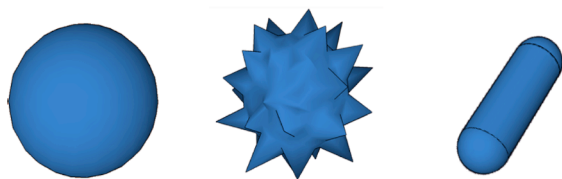
† The manuscript was written through contributions of all authors. All authors have given approval to the final version of the manuscript

‡ These authors have contributed equally: M. A. C. P., Ž. K., T. S.

* E-mail: Paolo.Milani@mi.infn.it; Kenneth.A.Dawson@cni.ucd.ie

Present address: Marco Monopoli. Royal College of Surgeons in Ireland. 121/122 St. Stephen's Green, Dublin 2, Dublin, Ireland. Željka Krpetić. School of Environment and Life Sciences, University of Salford, M5 4WT Salford, United Kingdom.

Electronic Supplementary Information (ESI) available: S1. Anisotropic Gold Nanoparticles – Gold Nanoparticle Shape Library; S2. Analytical Methods – Single Particle Extinction and Scattering (SPES); S3. Modelling the Polarizability of Gold Nanoparticles; S4. Physico-Chemical Characterisation of Anisotropic Gold Nanoparticles; S5. Identification and Geometrical Characterisation of Nanoparticles From TEM Micrographs. See DOI: 10.1039/x0xx00000x



Scheme 1. Schematic representation of the nanoparticle shape library: spherical, branched and rod-shaped nanoparticles.

of dispersions and surface chemistry are determined by conventional characterisation techniques. These include very popular analytical methods such as: Dynamic and Static Light Scattering for the determination of NPs hydrodynamic radius, size distribution and polydispersity¹³, Atomic Force Microscopy (AFM) for the analysis of the particle shape size and distribution along with the surface characterisation,¹⁴ Zeta potential measurements,¹⁵ UV-Vis spectroscopy for analysis of plasmonic metal nanoparticles (e.g. Au, Ag),¹⁶ Electron Microscopy for the analysis of the particles size and shape,¹⁷ nanoparticle tracking analysis (NTA)¹⁸ and field flow fractionation (FFF).¹⁹ Recently, Differential Centrifugal Sedimentation (DCS) allowed high resolution sizing of monolayer protected metal nanoparticles,²⁰ fine detections of particle aggregation states²¹ and used in addition to other analytical techniques to assess mapping of protein binding at the nanoparticle surface on a particle-by-particle basis.²²

Most of the above-mentioned techniques are not suitable for in-line, high-throughput nanoparticle analysis since they require off-line manipulation of the dispersion, moreover, do not provide a straightforward characterisation of nanoparticle shapes and/or the evolution for polydisperse samples in fluids. Optical techniques, based on light absorption or scattering,²³ are, in principle, valid candidates for the direct *in situ* characterisation of nanoparticles in solution, since they do not require any sample manipulation such as drying, concentration, purification etc.

In spite of being very straightforward and easy to use, Dynamic Light Scattering (DLS) is unable to give any information on the nanoparticle structure, shape anisotropy and assembly of nanoparticle with high polydispersity but giving only the information on the particle hydrodynamic radius.^{24, 25}

Recently, an approach based on single particle extinction and scattering (SPES) optical characterisation has been reported.²⁶⁻²⁸ SPES provides two independent parameters describing the optical field scattered forward from single particles illuminated by a laser beam. These two independent parameters are directly measured from the interference between the transmitted beam and the forward scattered light, thanks to the self-reference interference between the faint scattered and the intensely transmitted fields.^{27, 28} The raw data generated by SPES are described with real and imaginary parts of the electric field, $\text{Re } S(0)$ and $\text{Im } S(0)$ respectively.²⁷⁻²⁸ The former is related to the ability of the particle to scatter and absorb the light and the latter to the capacity of the particle of

being polarized under an external field, *i.e.* polarizability.²³ Both parameters are influenced by the surface plasmon modes

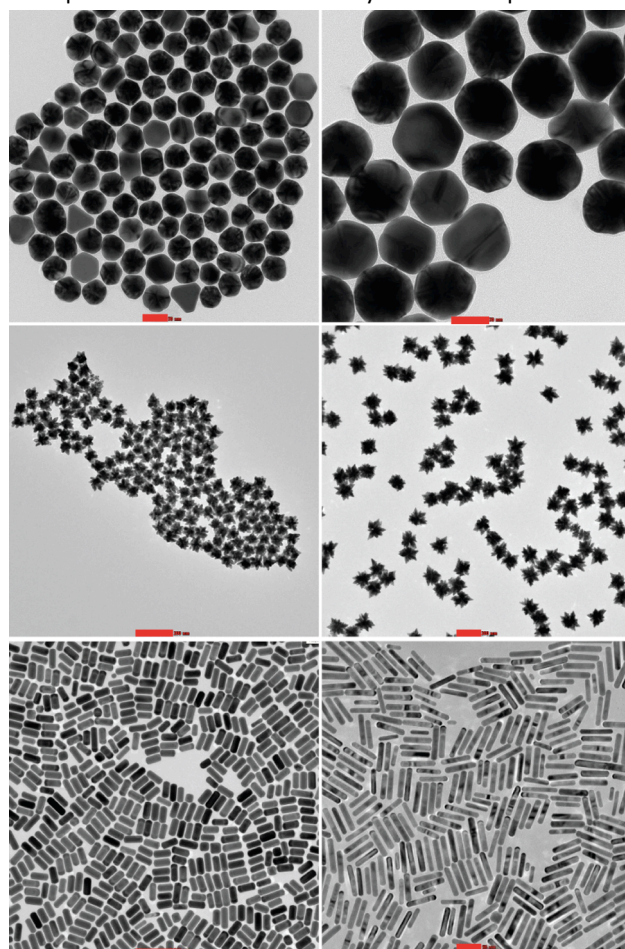


Figure 1. Gold nanoparticle shape library: representative TEM micrographs of nanoparticles used in this study, *i.e.* spherical gold nanoparticles (GNP1, GNP2), branched gold nanoparticles (GNP3, GNP4) and gold nanorods (GNP5, GNP6). Scale bars are 50, 50, 200, 200, 200 and 50 nm respectively.

that are being modified upon changes in shape and/or changes in surface features.

This overcomes the limitations typical for DLS, making SPES an efficient tool for the *in line* characterisation of nanoparticle polydispersity in fluids, providing information on particle size distribution, agglomeration state and refractive index of the dispersed species.²⁶⁻³¹ In the present configuration, SPES can work with dielectric particles down to roughly 200 nm in diameter. In the case of metallic NPs, as for example gold, both scattering and extinction efficiencies are much larger than in the case of dielectric particles, increasing the sensitivity of the method for small sizes. Hence, the lower size limit of detection is achieved, *i.e.* 50-60 nm for the spherical particles. Moreover, the plasmon properties depend on the particle shape.^{23, 26} Herein, we exploit the SPES technique for the challenging characterisation of the particle shape in the case of gold nanoparticles in dispersion, represented with a shape library. As a proof of concept, we use the SPES technique applied on a shape library of gold nanoparticles, consisting of dispersed

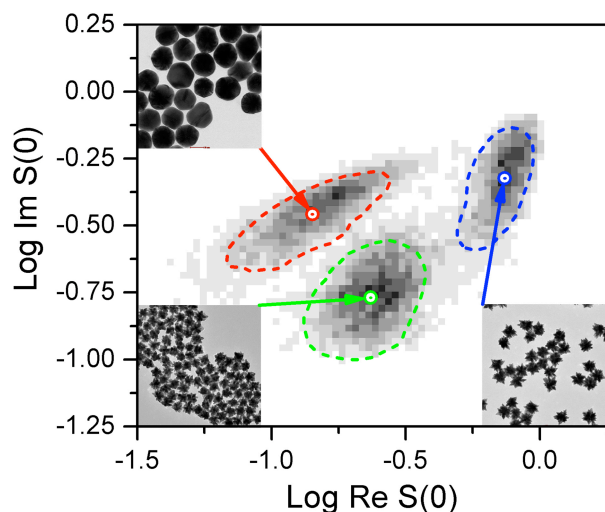


Figure 2. SPES raw data representative for spherical (GNO2, red) and branched gold nanoparticles (GNP3, green; GNP, blue) with the corresponding centroids indicated. Comparing the results obtained for GNP2 and GNP3, the effect of the charge of the surface Plasmon is evidenced by the strong shift (almost a decade) in the horizontal direction. Raw data for the forward scattered field amplitudes are represented here, as described in the text. Grey tones indicate on a linear scale the number of particles within each bin. In the insets, the corresponding TEM micrographs of the nanoparticles are shown

spherical nanoparticles, branched nanoparticles (nanostars) and nanorods of extremely narrow size distribution (Scheme 1). We demonstrate that SPES allows the quantitative analysis of a range of particle shapes in a solution being able to distinguish between different shapes of particles of comparable size.

We provide experimental evidence that, independently of any previous knowledge of the particles, the SPES method is capable of detecting the surface features of nanoparticles at scales much smaller than the wavelength of light and therefore well below the limit of optical resolution.

Results and discussion

Highly monodisperse gold nanoparticles of different shapes were prepared and functionalised with carboxy-PEG thiol ligands to avoid the formation of aggregates.²⁰ The shape library of anisotropic gold nanoparticles designed for this work is illustrated in Figure 1, while full information on the nanoparticle preparation and their physico chemical characterisation is available in the Electronic Supplementary Information (ESI) (Table S1). This library consists of nanoparticles with three distinct shapes: spherical gold nanoparticles of 60 and 80 nm (GNP1, GNP2), branched gold

nanoparticles of 60 and 120 nm nominal core diameter (GNP3, GNP4) and gold nanorods with different aspect ratios (90 x 40 nm; 68 x 13 nm; GNP5, GNP6). We have applied SPES technique to test its capability to detect different shapes of particles with comparable nominal core diameter.

Note that in order to compare the size range of branched (star-shaped) nanoparticles with spherical nanoparticles we have developed a novel approach to automatically size anisotropic nanoparticles from transmission electron microscopy (TEM) micrographs. Whilst geometrical identification and hence the size distribution of spherical nanoparticles from TEM micrographs can be easily obtained using automatic software approaches (e.g. ImageJ software), determining the size distribution of branched particles is not a trivial task.¹⁷ We developed a software specifically aimed to identify and process nanoparticles using TEM micrographs in a semi-automatic fashion. The idea was to use "ingredients" from different theories (percolation, cluster analysis, heuristic algorithms) in order to automatically identify the nanoparticles. Details of this approach are available in the ESI.

SPES analysis was performed by flowing aqueous dispersions of gold NPs through a laser beam at constant, known speed and the signals from the detectors were sampled at a frequency higher than the inverse transit time to accurately follow in time the self-reference interference fringes. As an output, the SPES produces two-dimensional (2D) plots (histograms) providing the raw data distribution of single particle fields in the complex plane $\text{Re } S(0) - \text{Im } S(0)$.²⁷ Typically, the scattered field depends on *i*) size, *ii*) refractive index and *iii*) shape and orientation of each particle.

Figure 2 shows how spherical (GNP2) and branched gold nanoparticles (GNP3, GNP4) in the comparable size range occupy different regions of the two-dimensional plot. The SPES raw data, represented in 2D histograms, show the number of particles measured within each 2D bin with grey tones *i.e.* the darker the grey tone, the larger the number of particles. The resulting analysis of spherical gold particles of 80 nm in diameter and two samples of branched particles (60 and 124 nm nominal diameter) clearly indicate the capability of the system to distinguish between them independently of any information about the particles, observing a large shift in the case of branched particles towards larger real and smaller imaginary values. Moreover, it also shows an estimate of the actual resolution of the SPES technique, considering that we are characterising highly monodisperse samples. The data spread in the 2D plot provides the resolution of the experimental set-up used here accordingly to fundamental definitions of resolution.³² The spread is still smaller than the separation between the data sets. We have not used here more refined algorithms like deconvolution or any inversion process to analyze data. These approaches are nevertheless absolutely viable and easy to be implemented if necessary, as it occurs for any resolution limited measuring device. We limit ourselves to evaluate the centroid of the data distributions, which results with the most probable value based on the statistical analysis and is easily comparable with the theoretical expectations.

The rationale of the shift observed in Figure 2 is explained *via* a semi-quantitative interpretation based on the Drude simplified model detailed in the ESI.²³ By considering the scattered field $S(0)$ at the first order of the expansion, and thanks to the simple assumption about the influence of surface corrugation of the plasmon resonance (see ESI), we expect a stronger

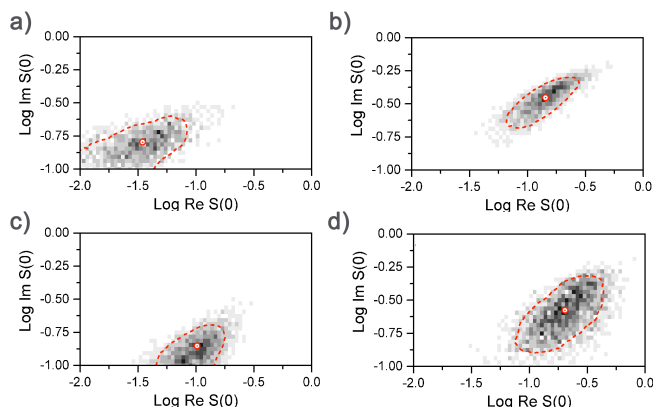


Figure 3. SPES raw data for **a)** GNP1, **b)** GNP2 (spherical gold nanoparticles) and **c)** GNP6, **d)** GNP5 (gold nanorods). The centroids of the 2D distributions are indicated with crosses. The effect of shape is again to give appreciable horizontal shift, showing the change of polarizability induced by the change in the surface plasmons.

absorption and weaker scattering for branched particles compared to spherical nanoparticles, as shown in Figure 2.

Figure 3 reports the results obtained for nanospheres (a, b) and nanorods (c, d). Data are presented separately for two reasons: *i)* the samples have been measured separately; *ii)* some data sets are partially superimposed, thus making it difficult to compare the corresponding SPES raw data.

By exploiting basic statistical approaches it is possible to deconvolute the position of the centroids, even in the cases of overlapping data distributions. This approach is not the purpose of the present work, and therefore we only extract the centroids of each data set. A clear systematic shift is evident between the spherical and rod-shaped nanoparticles when comparing the position of the data sets in the 2D plane when the separation between centroids becomes excessive. Herein we exploit the estimate of the instrumental resolution mentioned above. Even in the case of Figure 3 (b) and (d), the separation of the centroids is at least comparable to the width of the data sets (evidenced by the dashed lines). This result shows that basic resolution criteria like the Rayleigh's one for spectral lines are enough to separate spheres from rods even if data are partially superimposed.³²

We highlight that these assessments are solely based on the experimental data provided, in an absolutely model-independent way. The Drude simplified model (see ESI) can be used to explain the differences between the results reported in Figure 3. Both size and shape can be identified without any free parameter for nanorods of different aspect ratios. For simplicity, we approximate the nanorods as ellipsoids. Under the small particle approximation, the polarizability for an

ellipsoid can be obtained.²³ As shown in the ESI, accurate evaluation of polarizability and scattered fields for ellipsoids is then possible without any free parameter by introducing the same properties used for the description of spheres. The additional degree of freedom given by the particle orientation must be taken into account due to the non-spherical shapes. This makes the polarizability and the fields, both real and imaginary parts, to change of almost and order of magnitude upon orientation. This is not evident from the results in Figure 3 (c and d), where the data spread is appreciably smaller, still comparable to the estimated resolution. In fact, we evaluated the characteristic time constants for the Brownian rotations of these nanoparticles to be smaller than the time needed to traverse the laser beam in the focal plane. Therefore, any particle generates an optical signal which is an average of the orientations assumed during the passage through the beam (see Analytical Methods). As a consequence, the fast orientation changes are responsible for the relatively reduced spread of the population observed in Figure 3 with respect to all possible values. This causes the final results exhibiting a limited uncertainty, which allows for a very good separation of (small) rods from spheres.

Experimental Methods

Chemicals. All the reagents used in this work were of highest available grade and were purchased from Sigma Aldrich, if not stated otherwise. Hydrogen tetrachloroaurate trihydrate ($\geq 99.9\%$), Trisodium citrate trihydrate, Sodium borohydride ($\geq 99\%$), Bis(p-sulfonatophenyl)phenylphosphine dihydrate dipotassium salt (BSSP, 97%), Hexadecyltrimethylammonium bromide (CTAB, $\geq 99\%$), Hexadecyltrimethylammonium Chloride (CTAC, $\geq 98\%$), L-ascorbic Acid ($\geq 99\%$), Potassium Carbonate ($\geq 99\%$), Tannic acid, Silver nitrate ($\geq 99.9\%$), Hydrochloric acid (37%, AR grade), water used for nanoparticle preparation CHROMASOLV® Plus, HPLC grade and (LC-MS Ultra CHROMASOLV®, UHPLC-MS grade). Sodium oleate (NaOL, $\geq 97\%$) was purchased from Tokyo Chemical Industry Co., Ltd. And Carboxy-PEG thiol ligand (HS-C₁₁-EG₆-OCH₂-COOH) from ProChimia Surfaces.

Preparation of Gold Nanoparticles

i) Spherical Gold Nanoparticles

Gold nanoparticles of 60 and 80 nm nominal core diameters chosen for this work were purchased from BBI Solutions. The particles were functionalised with carboxy-PEG thiol ligand (ProChimia) HS-(CH₂)₁₁-[EG]₆-OCH₂-COOH (referred as PEG6-COOH further in the text). The surface ligand provides stability against aggregation and excellent dispersion in aqueous media.

For the surface functionalisation, as received gold colloid was placed in six glass vials (5 mL per vial) and subsequently, 20 mL of the aqueous solution of the functional PEG-ligand³³ (50 mM) was added under vigorous stirring to each vial (30 sec). The mixtures were then left overnight and subsequently excess ligands were removed by repetitive cycles centrifugation (5 min, 4000/5000 rpm, 10 °C) and redispersed

in fresh milli-Q water (resistivity 8.2 M Ω ·cm at 25°C). The final volume of the colloidal dispersion was 1 mL.

ii) Gold nanorods

Gold nanorods were prepared using a seeded-growth method reported in the literature.^{34,35}

Step 1. Seeds preparation. 5 mL of 0.5 mM of HAuCl₄ was added to 5 mL of 0.2 M of CTAB in a glass vial under vigorous stirring, followed by the addition of 1 mL of freshly prepared 6 mM NaBH₄ under vigorous stirring. The mixture was vigorously stirred for 2 min and aged at room temperature for further 30 min. The colour of the colloidal dispersion resulted light brown. Prepared seeds were utilised within 1 day of preparation.

Step 2. Gold nanorods preparation. Growth solution was prepared as follows: the required amount of CTAC/CTAB and sodium oleate (NaOL) (see Table S2 for details on quantities) were dissolved in 250 mL of warm milli-Q water (40–50°C), in a 1 L round bottom flask, then the solution was kept at 30 °C in an oil bath. Subsequently, a certain volume of AgNO₃ (4 mM) was added into the flask (see Table S2) and the mixture was kept undisturbed for 15 min at 30 °C. Then 250 mL of HAuCl₄ (1 mM) was added into the flask under stirring (700 rpm), the colour of the mixture changed from yellow to light yellow 3 h. A certain volume of HCl (37 wt.% in water) (see Table S2 for details) was then added under stirring (400 rpm, 15 min) followed by the addition of 1.25 mL aqueous ascorbic acid (64 mM) under vigorous stirring (1200 rpm, 30 s). The colour of the mixture changed from yellow to colourless following the reduction of Au(III) to Au(I). Subsequently, a required volume of gold seeds was added under vigorous stirring (1200 rpm, 30 s) and the dispersion was kept undisturbed at 30 °C overnight until the completion of the reaction. The resulting colloidal dispersion was filtered through 0.2 μ m Millipore® syringe filters before surface modification.

For the surface modification, 20 μ L of aqueous functional PEG ligand (50 μ M) was added under stirring, to 20 mL of the gold nanorods (GNR) dispersion. The mixtures were then left overnight and subsequently excess ligands were removed by repetitive cycles centrifugation (5 min, 4000/5000 rpm, 25 °C) and redispersed in fresh milli-Q water. Final volume was 1–5 mL, depending on the sample.

iii) Branched gold nanoparticles (Gold nanostars)

Branched gold particles were prepared using a two-step seeded growth modified literature method.³⁶

Step 1. Seeds preparation. Gold seeds of ca. 10 nm diameter were prepared by citrate reduction of HAuCl₄, *i.e.* modified Turkevich-Frens method.^{20, 37, 38} Briefly, 900 μ L of HAuCl₄ (1% wt.) were added to 90 mL of milli-Q water and heated to boiling under reflux. Subsequently, 2.7 mL of trisodium citrate (1% wt.) were quickly injected into the mixture under vigorous stirring. The mixture was left under reflux for 10 min. After the formation of the ruby red colour, the flask was placed on ice and allowed to cool to room temperature. Subsequently, the particles were filtered through a 0.2 μ m Millipore® filter and kept at 4°C up to two weeks before use.

Step 2. Formation of branches and particle growth. Different sizes of branched gold nanoparticles were prepared *via* the seeded growth method using the spherical gold seeds prepared as described in step 1. In a typical preparation, 96 mL of milli-Q water was placed in a 250 mL beaker tall form equipped with a magnetic stir bar to allow high vortex during the reaction. To this 100 μ L of HAuCl₄ (100 mM) was added, followed by an addition of 500 μ L of gold seeds, 250 μ L of trisodium citrate (1% wt.) and 250 μ L of freshly prepared aqueous hydroquinone (0.14 M). The mixture was vigorously stirred for 10 min allowing the formation of branched particles (cerulean blue coloured gold colloid observed). In order to tune the overall size of the branched nanoparticles, the amount of gold seeds added to the reaction mixture was changed (see Table S3).

To the obtained dispersions of branched gold nanoparticles, 1 mL of aqueous Bis-(*p*-sulfonatophenyl) phenylphosphine dihydrate dipotassium (BSPP)³⁹ (75 mM) was added and stirred for 30 sec, to quench the branches growth reaction. Subsequently, for the ligand exchange/functionalisation, 20 μ L of the aqueous solution of the functional-PEG thiol ligand (50 μ M) was added under stirring to each vial. The mixtures were then left overnight and subsequently washed by repetitive cycles centrifugation (5 min, 4000–5000 rpm, 25 °C) redispersing in fresh milli-Q water to a final volume of 1 mL.

Analytical Methods

Single Particle Extinction and Scattering (SPES). The complex amplitude of the scattered field has been measured through a SPES device described in previous works.^{27–28} A 5 mW solid state laser (wavelength 635 nm) has been focused to a diameter of 5 μ m into a flow cell and the emerging light collected by a segmented photodiode. A small particle passing through the focal region generates a scattered wave that superimposes to the intensely transmitted beam. Aqueous dispersions of particles were flown through the beam at a constant speed of 0.1 m/s and the electric signals from the sensors were sampled at a frequency of 1 MHz, higher than the inverse transit time. Therefore a detailed history of the signals was obtained and passed through a dedicated pulse shape analyser to extract the field amplitude of each particle. The method automatically provides an intrinsic calibration of the signals, thus allowing the data interpretation without any free parameter.

SPES is advantageous when working with metallic nanoparticles, in particular, those made of gold. Thanks to the plasmonic properties of gold nanoparticles, both scattering, and extinction efficiencies are much larger than in the case of dielectric particles, increasing the sensitivity of the method for small sizes. Moreover, the surface plasmons are strongly affected by size and shape, largely increasing the sensitivity in distinguishing different sizes and shapes (ESI).

UV-Visible Spectroscopy. UV-Vis spectra were recorded on a Varian's Cary®6000i spectrophotometer, registering the spectra in the 400–800 nm range (for spherical gold nanoparticles and nanorods) and 400–1400 nm range (for

branched gold nanoparticles) using a quartz cuvette with a path length of 1 cm.

UV-Visible Spectroscopy. UV-Vis spectra were recorded on a Varian's Cary®6000i spectrophotometer, registering the spectra in the 400-800 nm range (for spherical gold nanoparticles and nanorods) and 400-1400 nm range (for branched gold nanoparticles) using a quartz cuvette with a path length of 1 cm.

Differential Centrifugal Sedimentation (DCS). Monodispersity and particle size distributions were analysed using a disc centrifuge DC24000 (CPS Instruments Inc.). For analysis, the disc was filled with sucrose-based density gradient (8-24 w/w %) using freshly prepared aqueous solutions in Milli-Q and filled successively in nine consecutive steps into the disc (rotating at a maximum speed of 24000 rpm) starting with the solution of highest density.²⁰ Subsequently, 0.5 mL of dodecane was injected into the gradient, as a gradient capping agent, to prevent any evaporation of aqueous gradient fluid due to any heating of the disc occurring during analysis. Calibration was performed using polyvinylchloride (PVC) standard (0.476 μm , Analytik Ltd.). Calibration was carried out before each measurement by injecting 0.1 mL of the standard. Similarly, for analysis 0.1 mL of each sample diluted to appropriate sample concentration was injected into the disc. Note that in the case of nanorods, a non-sphericity factor of 0.5 was set by the instrument software. However, the diameter/aspect ratio of gold nanorods reported herein was determined using TEM.

Transmission Electron Microscopy (TEM). Transmission electron microscopy (TEM) micrographs of gold nanoparticles used in this work were acquired using an FEI™ Tecnai™ G2 20 Twin microscope (FEI, Inc.). The microscope is equipped with thermionic LaB6 cathode instrument operating at accelerating voltage of 200 kV. Samples were prepared by evaporating ca. 10 μL of appropriately diluted nanoparticle dispersions onto Formvar/Carbon-coated copper grids (Agar Scientific; 400 mesh; square).

Nanoparticle Tracking Analysis (NTA). The number concentration of the samples was measured with Nanosight LM10 Nanoparticle Analysis System equipped with the NTA 1.3 Analytical Software (Nanosight Ltd.). The sample chamber was cleaned with water and ethanol before starting measurements. Approximately 1 mL of the sample was loaded into the chamber using a disposable syringe. A video of the particles movement, *i.e.* Brownian motion was recorded for each measurement (30 seconds long). Milli-Q water was used as the dispersant in all measurements. The temperature was detected with a temperature probe before analysing the video record in order to adjust the viscosity of the solution.

Dynamic Light Scattering (DLS). Particle size distributions were also measured using Zetasizer Nano ZS (Malvern Instruments Ltd). A detection angle of 173° and detection temperature of 25 °C were applied to all measurements. The light source was a 4 mW He-Ne laser with a red (633 nm) wavelength. 1.5 mL PMMA disposable cuvettes (BRAND, Cat. No. 759115) were used, and approximately 0.8 mL of the sample was used to fill in the cuvette. Milli-Q Water was used as the dispersant in all

cases. For each measurement, 3 measurement runs were performed, having 12-16 sub-runs. The particle refractive index was set to 0.47 (gold) while the dispersant refractive index was set to 1.33 (water).

Conclusions

In conclusion, we demonstrated the capability of the SPES technique to distinguish between different shapes of gold nanoparticles in dispersion and its sensitivity to the surface features in the case of particles of comparable hydrodynamic size.

This approach solves a big challenge and brings the potential for routine screening of different shapes of nanoparticles in dispersion, without necessarily utilising off-line sophisticated and expensive tools based on the electron or scanning probe microscopies, and without the need for laborious analysis using off-line techniques. The major breakthrough of SPES consists in the short analysis time (a few minutes), precision of outputs and applications to in-line analysis approaches, making this tool a valuable support for the *in vitro* and *in vivo* evaluation of the effects of nanoparticle shapes and for optimisation of the large-scale production processes of nanoparticles with controlled shapes.

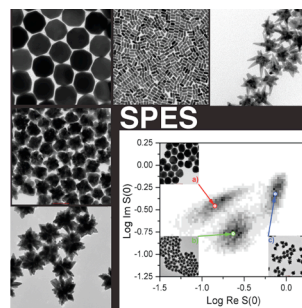
Acknowledgements

Ž.K., P.M. and K.D. acknowledge the financial support of the EU FP7 FutureNanoNeeds project (NMP.2013.1.3-3) under the grant agreement number 604602. J.M.A. acknowledges CNPq - Conselho Nacional de Desenvolvimento Científico e Tecnológico, of the Ministry of Science, Technology and Innovation of Brazil.

References

1. E. J. Cho, H. Holback, K. C. Liu, S. A. Abouelmagd, J. Park and Y. Yeo, *Mol. Pharmaceut.*, 2013, **10**, 2093.
2. A. Lopez-Serrano, R. M. Olivas, J. S. Landaluz and C. Camara, *Anal. Methods*, 2014, **6**, 38.
3. M. P. Monopoli, D. Walczyk, A. Campbell, G. Elia, I. Lynch, F. Baldelli Bombelli and K. A. Dawson, *J. Am. Chem. Soc.*, 2011, **133**, 2525.
4. K. P. Donaldson, C. A., *Curr. Opin. Biotechnol.*, 2013, **24**, 724.
5. A. Albanese and W. C. W. Chan, *ACS Nano*, 2011, **5**, 5478.
6. Ž. Krpetić, S. Anguissola, D. Garry, P. Kelly and K. Dawson, in *Nanomaterials: Impact on Cells and Cell Organelles*, eds. D. G. Capco and Y. Chen, Springer Netherlands, *Adv. Exp. Med. Biol.* 2014, **811**, ch. 8, 135.
7. S. Mirsadeghi, R. Dinarvand, M. H. Ghahremani, M. R. Hormozi-Nezhad, Z. Mahmoudi, M. J. Hajipour, F. Atyabi, M. Ghavami and M. Mahmoudi, *Nanoscale*, 2015, **7**, 5004.
8. W. Pengyang, W. Xin, W. Liming, H. Xiaoyang, L. Wei and C. Chunying, *Sci. Technol. Adv. Mater.*, 2015, **16**, 034610.

9. A. Bigdeli, S. Palchetti, D. Pozzi, M. R. Hormozi-Nezhad, F. Baldelli Bombelli, G. Caracciolo and M. Mahmoudi, *ACS Nano*, 2016, **10**, 3723.
10. A. Albanese, P. S. Tang and W. C. W. Chan, *Annu. Rev. Biomed. Eng.*, 2012, **14**, 1.
11. Y. Li, M. Kroger and W. K. Liu, *Nanoscale*, 2015, **7**, 16631.
12. R. Toy, P. M. Peiris, K. B. Ghaghada and E. Karathanasis, *Nanomed.*, 2014, **9**, 121.
13. R. Xu, *Particle Characterization: Light Scattering Methods*, Springer Netherlands, London, 2000.
14. C. M. Hoo, N. Starostin, P. West and M. L. Mecartney, *J. Nanopart. Res.*, 2008, **10**, 89.
15. N. Arjmandi, W. Van Roy, L. Lagae and G. Borghs, *Anal. Chem.*, 2012, **84**, 8490.
16. W. Haiss, N. T. K. Thanh, J. Aveyard and D. G. Fernig, *Anal. Chem.*, 2007, **79**, 4215.
17. T. Allen, *Particle Size Measurement*, Springer Netherlands, 1997.
18. V. Filipe, A. Hawe and W. Jiskoot, *Pharmaceut. Res.*, 2010, **27**, 796.
19. M. Baalousha, B. Stolpe and J. R. Lead, *J. Chromatogr. A*, 2011, **1218**, 4078.
20. Ž. Krpetić, A. M. Davidson, M. Volk, R. Levy, M. Brust and A. I. Cooper, *Acs Nano*, 2013, **7**, 8881.
21. Ž. Krpetić, I. Singh, W. Su, L. Guerrini, K. Faulds, B. G. A. and D. Graham, *J. Am. Chem. Soc.*, 2012, **134**, 8356.
22. P. M. Kelly, C. Åberg, E. Polo, A. O'Connell, J. Cookman, J. Fallon, Ž. Krpetić and K. A. Dawson, *Nat. Nano*, 2015, **10**, 472.
23. C. F. Bohren and D. R. Huffman, in *Absorption and Scattering of Light by Small Particles*, Wiley-VCH Verlag GmbH, 2007, pp. 57-81.
24. W. I. Goldberg, *Am. J. Phys.*, 1999, **67**, 1152.
25. B. J. Frisken, *Appl. Opt.* 2001, **40**, 4087.
26. M. A. C. Potenza, P. Milani, *J. Nanopart. Res.*, 2014, **16**, 1.
27. M. A. C. Potenza, T. Sanvito and A. Pullia, *AIP Adv.*, 2015, **5**, 117222.
28. M. A. C. Potenza, T. Sanvito, S. Argenti, C. Cella, B. Paroli, C. Lenardi and P. Milani, *Sci. Rep.*, 2015, **5**, 18228.
29. M. A. C. Potenza, K. P. V. Sabareesh, M. Carpineti, M. D. Alaimo and M. Giglio, *Phys. Rev. Lett.*, 2010, **105**, 193901.
30. M. A. C. Potenza, T. Sanvito and A. Pullia, *J. Nanopart. Res.*, 2015, **17**, 1.
31. S. Villa, T. Sanvito, B. Paroli, A. Pullia, B. Delmonte and M. A. C. Potenza, *J. Appl. Phys.*, 2016, **119**, 224901.
32. J. W. Goodman, *Introduction to Fourier Optics*, McGraw Hill, 1996.
33. A. G. Kanaras, F. S. Kamounah, K. Schaumburg, C. J. Kiely and M. Brust, *Chem. Commun.*, 2002, 2294.
34. X. Ye, Y. Gao, J. Chen, D. C. Reifsnyder, C. Zheng and C. B. Murray, *Nano Lett.*, 2013, **13**, 2163.
35. X. Ye, C. Zheng, J. Chen, Y. Gao and C. B. Murray, *Nano Lett.*, 2013, **13**, 765.
36. J. Li, J. Wu, X. Zhang, Y. Liu, D. Zhou, H. Sun, H. Zhang and B. Yang, *J. Phys. Chem. C*, 2011, **115**, 3630.
37. J. Turkevich, P. C. Stevenson and J. Hillier, *Disc. Faraday Soc.*, 1951, **11**, 55.
38. G. Frens, *Nat. Phys. Sci.*, 1973, **241**, 20.
39. C. J. Loweth, W. B. Caldwell, X. G. Peng, A. P. Alivisatos and P. G. Schultz, *Angew. Chem. Int. Edit.*, 1999, **38**, 1808.

**TOC highlight:**

Single Particle Extinction and Scattering (SPES) detects the shape of anisotropic gold nanoparticles in dispersion *in situ*.