

Human Annoyance, Acceptability and Concern as Responses to Vibration from the Construction of Light Rapid Transit Lines in Residential Environments[☆]

D. Wong-McSweeney,^{a,*} J. S. Woodcock^a, E. Peris^a, D. C. Waddington^a,
A. T. Moorhouse^a, M.D. Redel-Macías^b

^a*Acoustics Research Centre, University of Salford, Salford, M5 4TW, UK*

^b*Dep. Rural Engineering Campus de Rabanales, University of Córdoba,
Córdoba, Spain*

Abstract

The aim of this paper is to investigate the use of different self-reported measures for assessing the human response to environmental vibration from the construction of an urban LRT (Light Rapid Transit) system. The human response to environmental stressors such as vibration and noise is often expressed in terms of exposure-response relationships that describe annoyance as a function of the magnitude of the vibration. These relationships are often the basis of noise and vibration policy and the setting of limit values. This paper examines measures other than annoyance by expressing exposure-response relationships for vibration in terms of self-reported concern about property damage and acceptability. The exposure-response relationships for concern about property damage and for acceptability are then compared with those for annoyance. It is shown that concern about property damage occurs at vibration levels well below those where there is any risk of damage. Earlier research indicated that concern for damage is an important moderator of the annoyance induced. Acceptability, on the other hand, might be influenced by both annoyance and concern, as well as by other considerations. It is concluded that exposure-response relationships expressing acceptability as a function of vibration exposure could usefully com-

*Corresponding author

Email address: D.B.C.WongMcSweeney@salford.ac.uk (D. Wong-McSweeney,)

plement existing relationships for annoyance in future policy decisions regarding environmental vibration. The results presented in this paper are derived from data collected through a socio-vibration survey ($N = 321$) conducted for the construction of an urban LRT in the United Kingdom.

Keywords: Light Rapid Transport, Vibration, Construction, Acceptability, Concern, Annoyance, Exposure-Response Relationship.

1. Introduction

Preparations in the EU and other regions for transferring traffic from road to rail mean that huge investments are currently being put into railway infrastructure to achieve a higher capacity. Railway has been promoted over other
5 means of transport due to its environmental friendliness and competitiveness. However, the construction of new railways is not always welcome. Building large railway infrastructure involves complex construction operations that are sometimes performed during the whole day, generating high levels and durations of noise and vibration. Vibrations due to construction activity have been shown
10 (Waddington et al., 2011; Woodcock et al., 2011a) to be the cause of exceptionally high annoyance and objections. This means that for the sustainable development of these infrastructures the human response to those construction operations needs to be better understood and managed.

Compared with environmental noise, the human response to environmental
15 vibration is a relatively less developed area of research. This is partly because of the limited number of studies, but also because studies have used different metrics for the characterisation of vibration and different human response scales (Waddington et al., 2014). The strength of vibration on building floors is the key parameter to assess the effect of vibrations on humans inside the building. It is
20 required for the prediction of the human response in future planning situations or in studying exposure-response relationships for vibrations. Assessment of this vibration strength or vibration level is also required to compare the actual or expected level with limits set during planning.

Guidance available for the assessment of human response to vibration varies
25 from country to country in the form of national and international standards
(e.g. BS 6472:2008; ISO 2631-2:2003). There is currently no consensus as to the
most appropriate single figure descriptor of vibration exposure or appropriate
criteria to prevent adverse effects. Since the criteria on which the assessment
methods advocated in these standards are often derived from psychophysical
30 investigations performed in laboratory conditions and borrowed from the noise
field (e.g. ISO15666:2003), it is not clear whether they are relevant for assessing
the adverse impacts of vibration in residential environments. These difficulties
have consequently hampered policy and standard development in this field, and
also affect the consistent application of current policy and standards.

35 Self-reported annoyance as a response to a stimulus is often used in the field
of acoustics to form exposure-response relationships. The annoyance of vibra-
tion has been studied in the laboratory and this has gone on to inform national
and international standards (e.g. BS 6472-1:2008, BS 5228-2:2009). The method
for measuring annoyance due to noise exposure in socio-acoustics field surveys is
40 standardised in ISO 15666:2003 and these methods have recently been adopted
for socio-vibration surveys. As is it more difficult to measure vibration annoy-
ance in the field, less research has been completed in residential environments.
More recent studies have been carried out regarding the annoyance of vibra-
tion from transport in residential areas (Klæboe et al., 2003; Waddington et al.,
45 2014). Objective parameters of exposure do not fully account for the annoyance
reported from vibration (Peris et al., 2014; Sharp et al., 2014; Janssen et al.,
2015; Woodcock et al., 2015 under review), a finding that applies to annoyance
from noise too (Guski et al., 1999).

Attitudinal factors such as future expectations of vibration levels and con-
50 cern about property damage constitute the most important parameters for rail-
way vibration annoyance (Peris et al., 2014). Further, concern for damage
to property was found to moderate the annoyance reported by residents near
to railway lines. This suggests that engineering measures alone will not solve
problems of concern about the consequences of unwanted vibration. By under-

55 standing attitudinal factors it is proposed that adverse reactions can be reduced
or avoided more cost-effectively than by reducing exposure levels. For example,
residents could be educated how low vibration levels are not likely to cause dam-
age to their property, therefore increasing the public acceptance of the vibration
source.

60 Public acceptance has been studied for sustainable energy technologies be-
cause it is crucial for their successful introduction into society (Upham et al.,
2015). Devine-Wright (2007) details how public acceptance is recognised as
an important issue shaping the widespread implementation of renewable energy
technologies and the achievement of energy policy targets. That work argues for
65 inter-disciplinary research combining qualitative and quantitative approaches,
using social research methods with emphasis on the symbolic, affective and
discursive nature of beliefs about these technologies. Huijts et al. (2012) put
forward a framework of citizen acceptance based on a review of psychological
theories and on empirical studies. In the framework the acceptance of a citizen,
70 a person affected by the placement of a technological object controlled by others,
is influenced by their attitude as well as by personal and social norms. Their at-
titude is formed from positive and negative feelings towards sustainable energy
technology and both attitude and personal norms are influenced by perceived
costs, risks and benefits. Trust and fairness also play into citizen's attitudes.
75 Public acceptance is considered the most important barrier in studies of urban
road pricing (Grisolía et al., 2015).

With regard to noise, public acceptance has long been an approach favoured
by the aircraft (Bauer et al., 2010) and rotorcraft industries (Leverton and
Pike, 2007). Acceptance through public engagement measures have also been
80 carried out for wind farms. Toke (2003) emphasises the benefits of sensitivity
to a local community from the developer and of a more open and proactive
dialogue between the wind industry and local communities. To increase public
acceptance of sustainable transportation systems, Pridmore and Miola (2011)
recommend measures such as gaining trust from the public, informing the public
85 in a transparent manner, seeing operations in action, improving the perception

of benefits and enhancing positive media coverage. Further study, however, is needed to establish the effectiveness.

It is suggested that along with annoyance, concern about property damage and acceptability could be useful measures of human response to vibration. Guidance for limiting vibration is based on prevention of damage to property. 90 A measurement of people’s concern about property damage in response to vibration would therefore be useful in allaying those concerns through prior communications. With regard to generating policy around vibration it is arguably easier to interpret people’s response using acceptability than annoyance. Even 95 if a vibration is annoying to someone, they may none the less find it acceptable if there is the prospect of future gain and therefore they may not complain.

In this paper, the self-reported human response to vibration from the construction of an urban LRT (Light Rapid Transit) system is investigated, specifically the question of whether acceptability and concern are viable measures of 100 the human response. Firstly the paper describes the methods used to collect the data using field measurements of vibration exposure and responses from face-to-face questionnaires. Next the statistical analyses are described and the results expressed as exposure-response relationships: exposure-annoyance, exposure-concern about property damage (hereon *concern*) and exposure-acceptability. 105 The results are then discussed with a particular emphasis on their proposed application in further work to address contemporary challenges involving environmental vibration.

2. Methodology

2.1. Study Design

110 The data used in the paper were collected for the Defra project: The Human Response to Vibration in Residential Environments (Waddington et al., 2011). Further details can be found in that work along with Waddington et al. (2014) and Sica et al. (2014). The two components needed for this paper were the exposure data and the response data. All of the measurements were made in

115 the North-West of the England in 2010 during the construction/extension of a
Light Rapid Transit (LRT) system.

The construction/extension of a LRT was chosen since at each point along
the line, a repeated cycle of activities was carried out. This was important as
residents at one end of the line would have experienced the full construction cycle
120 and could be surveyed without introducing a bias from the vibration survey.
Vibration measurements of the full construction cycle could at the same time
be undertaken further down the line.

Candidate sites were chosen, using online mapping services, and then re-
connoitered to assess their suitability as survey sites. It was important that
125 sites did not have other significant sources of vibration and were at appropriate
stages of the construction process. It was also important that there was a mix
of construction activities and that there were enough residences within 100 m.
Three sites were found to meet the requirements. There were 350 dwellings in
the sample.

130 2.2. *Vibration Exposure*

It is recommended by standards BS 6472-1:2008 (evaluation of human ex-
posure to vibration in buildings) and ISO 2631-2:2003 (evaluation of human
exposure to whole body vibration) that vibration is measured over a 24 hour
period at the centre of the room where the greatest vibration magnitude is per-
135 ceived. Due to the number of responses, vibration exposure was estimated using
a technique combining measurements and estimation. The vibration measure-
ment instrumentation used were Guralp CMD-5TD three axis force feedback
accelerometers. These have low noise-floors ($\sim 1 \times 10^{-6} \text{ ms}^{-2}$ at relevant fre-
quencies) and were synchronised using GPS signals.

140 The diagram in Figure 1 illustrates where long and short-term measurements
were made externally and internally to residences. The long-term measurements
captured the full life cycle of the construction site as it passed by residences over
approximately two months. Short-term measurements were made at various
distances from the line and at one location inside the residence. From the

145 long and short-term measurements the ground attenuation was characterised
using the Bornitz equation (Woods, 1997) and the long-term internal vibration
exposures estimated.

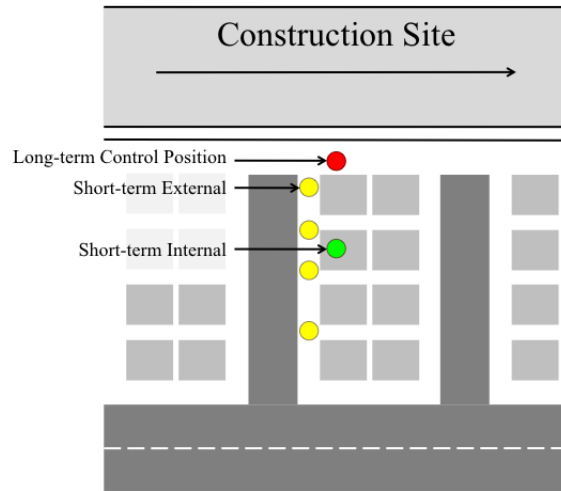


Figure 1: *Diagram showing an overview of the construction vibration measurements setup.*

Validation was made comparing the measured internal and predicted levels
inside a property 35 m from the construction source. The measured, weighted
150 (W_m unspecified body orientation), root-mean-square (rms) acceleration inside
the property was found to be 0.013 m/s^2 ; the predicted W_m weighted rms
acceleration inside the property was 0.019 m/s^2 . The difference in the measured
and predicted values therefore represents a relative error of 3.3 dB. The locations
characterised enabled the simulation of the 24 hour internal vibration in 321
155 dwellings from the 350 in the sample. From the acceleration data the Vibration
Dose Value (VDV) was calculated. This was chosen both because it is the
vibration exposure descriptor outlined in standard BS 5228-2:2009, and because
it was previously reported that for railway vibration there is no evidence for a
particular benefit to using one descriptor over another (Waddington et al., 2014).
160 As the exposures were estimated using distance curves, different descriptors were
not explored in this work and other descriptors may potentially be better.

2.3. Survey Data

Responses were collected from 350 residences across the three locations, A (161 residences), B (124 residences) and C (65 residences), with 133 male, 216 female and 1 not recorded. Respondents ranged in age between 16 and 88 years of age and Figure 2 shows the distribution of respondents' ages.

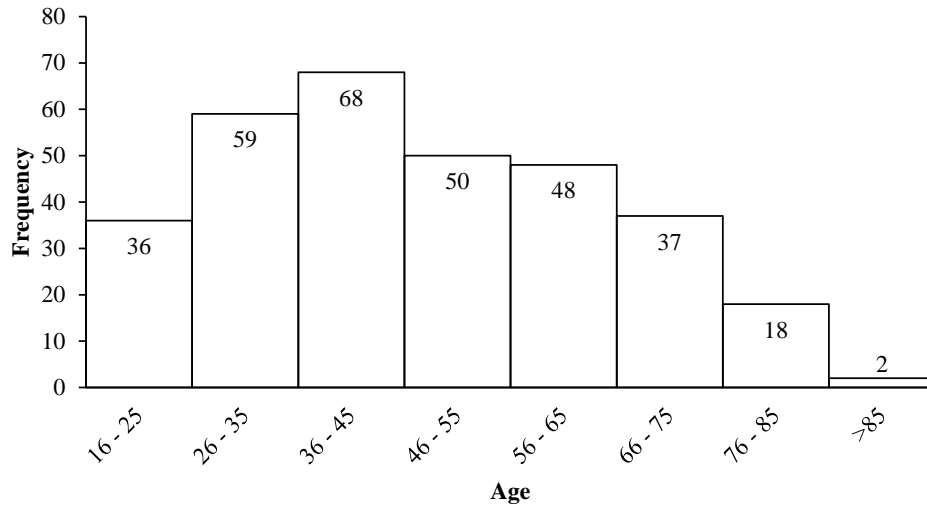


Figure 2: *Distribution of ages in this study. 32 ages were not reported and are not included in the chart.*

All three locations were on the outskirts of a large city and therefore relatively urban. The same LRT lines were being constructed at each location but intrinsic differences between each location would have resulted in some differences in construction activities. The light-railway lines were being constructed along disused railway cuttings behind residences at locations A and C but along the main road at location B. As a result of these differences the disruption to people's daily lives would have been different between locations.

2.4. Questionnaire

Having designed and pilot tested the questionnaire it was peer reviewed by five international experts in noise annoyance research (Sica et al., 2014). Surveys

were conducted face-to-face to avoid self-selection bias and only one person per household was interviewed, namely the person who answered the door. If the person to answer was under 16 then the next person was asked. Respondents
180 also had to have been living at the residence for more than 9 months.

To avoid bias regarding vibration, the survey was introduced as a neighbourhood satisfaction survey so the first few sections were about their neighbourhood and home. The wording of the questions regarding annoyance, concern about property damage and acceptability were of particular importance and are outlined below.
185

Annoyance: The questions relating to levels of annoyance used a five point semantic scale and the question: “*Thinking about the time you have been living here, when indoors at home, how bothered, annoyed or disturbed have you been
190 by feeling vibration or shaking or hearing or seeing things rattle, vibrate or shake caused by construction activity, including demolition, piling road works, drilling, surface activity such as bulldozers and loading trucks and any other construction activity? Would you say not at all (1), slightly (2), moderately (3), very (4) or extremely (5)?*”.

Concern About Property Damage: The question used to ascertain levels
195 of concern about property damage was: “*We would like to know if you are concerned that the vibration may damage this home or your possessions inside it in any way. Are you: No - Not at all (1), Yes - Slightly (2), Yes - Moderately (3), Yes - Very (4), Yes - Extremely (5)*”.

Acceptability: The question used to measure how acceptable residents
200 found vibration was: “*Looking at this scale and given all that you have said, in the time you have been living here, how acceptable have you found the level of vibration you have experienced in this home. Would you say it has been very acceptable, acceptable, neither acceptable nor unacceptable, unacceptable
205 or very unacceptable? Very acceptable (1), Acceptable (2), Neither acceptable nor unacceptable (3), Unacceptable (4), Very unacceptable (5)*”.

The questionnaire provided two routes into the vibration questions, either

via noticing vibration or noticing rattling or shaking as a result of vibration. If a respondent reported not feeling vibration nor any effects of vibration (e.g. rattling) they were not subsequently they were about property damage nor how acceptable they found the vibration. A default score of ‘0’, i.e. no score, was then recorded for these questions that people had been routed away from. Later, during the analysis, these scores were recoded to a ‘1’, the lowest category. There were 249 responses regarding acceptability.

2.5. Statistical Analyses

The programme SPSS (IBM SPSS Statistics v.20) was used to archive and analyse the survey data. Following the work of Peris et al. (2014) and Klæboe et al. (2003) an ordinal logistic regression was used to model the data and generate parameter estimates for each dependent variable threshold (e.g. not at all, slightly annoyed, moderately, very and extremely annoyed). Parameters were estimated using a Maximum Likelihood Estimation (MLE) and they are consistent and asymptotically multinomial. Putting these parameters into Equation 1 indicates the probability of having a response equal to or greater than j .

$$P(Y \geq j | \mathbf{X}_i - \mathbf{x}_i) = 1 - \left(\frac{e^{\tau_j - \beta \mathbf{x}_i}}{1 + e^{\tau_j - \beta \mathbf{x}_i}} \right) \quad \text{where } j \in [1, \dots, J - 1] \quad (1)$$

where τ_j corresponds to the j th estimated threshold and β is a vector of estimated parameters for both the vibration exposure. J is the number of dependent variable categories and \mathbf{X}_i is a vector of independent variables containing the exposure. For example, in applying this to the relationship between vibration exposure and annoyance τ_j are the annoyance thresholds, β would be a vector with the estimated coefficients relating the exposure to annoyance. x_i would be a vector of exposure values and modifying variables for an individual i .

In using ordinal logistic regression the assumption of proportional odds is implicitly made. The validity of this assumption was tested via the test of parallel lines. This compares the use of one set of coefficients over all thresholds to using different coefficients for each threshold. It was confirmed that indeed the assumption of proportional odds was valid as the chi-squared statistic for

the general model (different thresholds) was rejected with significance greater than 0.1.

230 Each model was judged by the change in the pseudo R^2 . In particular the Cox & Snell R^2_{pseudo} and Nagelkerke R^2_{pseudo} were used. For linear regression the R^2 value describes the proportion of variance in the dependent variable that is described by the predictor variable, however this is not the same for logistic regression. Instead only the relative improvement of one model over another
 235 can be judged using the pseudo R^2 values.

3. Results

Table 1 presents the descriptive statistics for the semi-empirically generated vibration dose value (VDV) used in this study.

Table 1: *Descriptive statistics for the vibration dose value ($VDV_{m,24h}$) generated semi-empirically in this work.*

N	Range	Minimum	Maximum	Mean	Std. Dev.	Variance
321	0.0737	0.0002	0.0739	0.0224	0.0218	0.0005

3.1. Exposure-Annoyance Relationship

240 From the ordinal logistic regression relating exposure, $\log_{10}VDV_{m,24h}(\text{m/s}^{1.75})$, and annoyance the parameters in Table 2 were estimated. Figure 3 shows the proportion of people who reported as being *Extremely Annoyed*, *Very Annoyed*, *Moderately Annoyed* or *Slightly Annoyed* in response to construction vibration. The lines delineate the boundaries between each of the categories. Also drawn
 245 on the graph are the 95% confidence intervals. The graph shows that as the exposure increases the greater the proportion of respondents who were annoyed at a higher level. The Cox & Snell R^2_{pseudo} value is 0.17 against which later models can be compared.

Table 2: *Estimated parameters for the prediction of annoyance by construction vibration exposure.*

Parameter	Estimates			
	Estimates	SE	95% CI	
			Lower	Upper
Threshold Annoyed (τ)				
Not at all	-3.153***	0.477	-4.088	-2.218
Slightly	-2.731***	0.469	-3.649	-1.812
Moderately	-2.177***	0.460	-3.079	-1.276
Very	-1.599***	0.456	-2.493	-0.704
Location (β)				
$\log_{10} VD V_{m,24h}$	1.771***	0.254	1.273	2.269

Link function: Logit. SE: Standard Error.

Cox & Snell $R^2_{\text{pseudo}} = 0.165$, Nagelkerke $R^2_{\text{pseudo}} = 0.178$

* $p < 0.1$, ** $p < 0.01$, *** $p < 0.001$

3.2. Exposure-Concern Relationship

250 Table 4 presents the estimated parameters for the relationship between exposure and concern about property damage. Figure 4 presents the exposure-response curves for the proportion of respondents who were at least *Slightly Concerned*, *Moderately Concerned* and *Highly Concerned* along with their 95% confidence intervals.

255 As with annoyance when vibration exposure increases so does the proportion of respondents who report as *concerned* at a higher level. The Cox & Snell R^2_{pseudo} value is around 0.11, somewhat less than the 0.17 for annoyance.

3.3. Exposure-Acceptability Relationship

260 Table 4 presents the estimated parameters for the relationship between vibration exposure and acceptability. Figure 5 presents the proportion of respondents reporting the level of vibration as *Very Acceptable*, *Acceptable*, *Neither*,

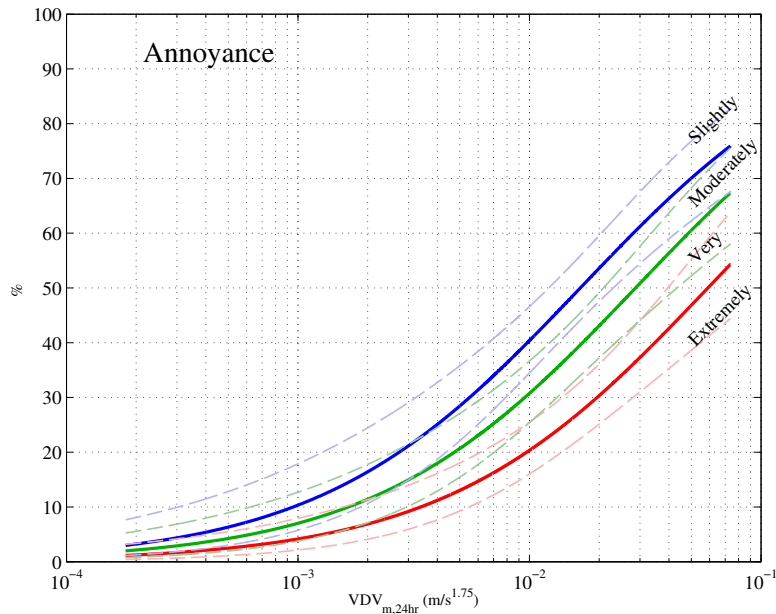


Figure 3: *Exposure-Response curves showing the proportion of people who are Extremely Annoyed, Very Annoyed, Moderately Annoyed and Slightly Annoyed by construction vibration. The dashed lines represent 95% confidence intervals.*

Unacceptable or Very Unacceptable. With greater exposure, the greater the proportion of people reporting it as unacceptable.

4. Discussion

265 In this work, the subjective responses of residents living near to construction sites were compared to semi-empirical estimations of the vibration. Using a questionnaire the responses were measured in three ways: 1. level of annoyance; 2. level of concern about property damage and 3. level of acceptability. Using ordinal logistic regression, exposure-response relationships between vibration and each of the responses were derived and comparisons made of the three.

270

This study presents the results from 321 interviews collected for the particular case of construction of an LRT in one city. As such the findings need to be approached with caution, and indeed may not apply to other construction

Table 3: *Estimated parameters for the prediction of concern about property damage by construction vibration exposure.*

Parameters	Estimates			
	Estimates	SE	95% CI	
			Lower	Upper
Threshold Concerned (τ)				
Slightly	-2.404***	0.447	-3.281	-1.527
Moderately	-1.840***	0.439	-2.700	-0.980
Very	-1.206**	0.434	-2.057	-0.356
Location (β)				
$\log_{10} VDV_{m,24h}$	1.344***	0.235	0.883	1.805

Link function: Logit. SE: Standard Error. $N = 321$.

Cox& Snell $R^2_{\text{pseudo}} = 0.112$, Nagelkerke $R^2_{\text{pseudo}} = 0.120$.

* $p < 0.1$, ** $p < 0.01$, *** $p < 0.001$

projects, such as the development of high speed railway lines. With considera-
275 tion of these limitations, the results indicate that acceptability and annoyance
are equally applicable for the prediction of community response to vibration lev-
els. This finding presents an interesting dichotomy for the management of the
human response to vibration from construction. On the one hand, the equiva-
lence of annoyance and acceptability as a predictor of community response sug-
280 gests that vibration limit values may be set on the derived annoyance exposure-
relationships curves without the need for consideration of a complex framework
of psychological factors. On the other hand, acceptability presents the possi-
bility of the management of psychological factors, such as perceived costs, risks
and benefits, and outcome efficacy, to improve the community response.

285 The question at hand is whether there are other useable measures of people's
responses to vibration other than annoyance. As for noise (Guski et al., 1999), it
has previously been found that vibration exposure only partly accounts for the

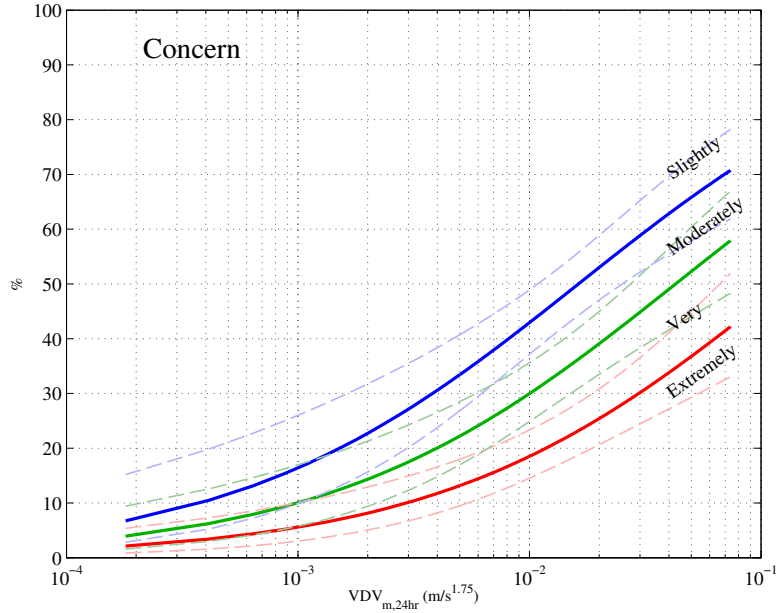


Figure 4: *Exposure-response curves showing the proportion of people reporting being extremely concerned, very concerned, moderately concerned and slightly concerned for property damage due to construction vibration, for a given vibration exposure ($VDV_{m,24hr}$). The dashed lines show 95% CI. $N=321$. Vibration data are ‘ W_m ’ weighted.*

variation in annoyance responses (Waddington et al., 2014; Woodcock et al., 2011b) and that other non-exposure factors do influence people’s annoyance
 290 (Peris et al., 2014). From the Cox & Snell R^2_{pseudo} presented here it is seen that exposure explains more of the variation in annoyance than it does in either *concern* or acceptability.

A comparison is now made of the sizes of confidence intervals. A relationship with tight 95% confidence intervals is generally considered more useful than one
 295 with broad intervals. Of the three measures acceptability has the broadest CIs as seen when comparing the graphs in Figures 3, 4 and 5. Annoyance has the tightest CIs closely followed by *concern*.

Also through a comparison of the graphs and parameter estimates it can be

Table 4: *Estimated parameters for the prediction of acceptability by construction vibration exposure.*

Parameter	Estimates			
	Estimates	SE	95% CI	
			Lower	Upper
Threshold (τ)				
Very Acceptable	-4.477***	0.600	-5.652	-3.301
Acceptable	-3.095***	0.538	-4.150	-2.041
Neither	-2.185***	0.511	-3.186	-1.184
UnAcceptable	-0.935**	0.491	-1.898	-0.027
Location (β)				
$\log_{10} VDV_{m,24h}$	1.115***	0.271	0.583	1.647

Link function: Logit. SE: Standard Error. $N = 249$

Cox & Snell $R^2_{\text{pseudo}} = 0.097$, Nagelkerke $R^2_{\text{pseudo}} = 0.102$

* $p < 0.1$, ** $p < 0.01$, *** $p < 0.001$

seen that the thresholds of the different levels of acceptability are spread much
300 further apart than for either *concern* or annoyance. This implies that within
the range of exposures measured a given level of acceptability covers a much
wider range of exposure compared to annoyance or *concern*. Increasing the β
value moves the graph to the right and lowering (to larger negative values) the
 τ thresholds increases the steepness of the curve. Each of the thresholds within
305 a metric has the same β parameter (proportional odds assumption).

Taken together, these results show that annoyance has a much tighter and
more distinct relationship to exposure than acceptability. In part this may be
due to the differences in questionnaire wording and scales used. Annoyance
was measured using a semantic scale running from “*Don’t notice*” through to
310 “*Extremely*”, i.e. levels of being annoyed, while acceptability was measured on
a semantic scale passing through neutral from unacceptable to acceptable. An-

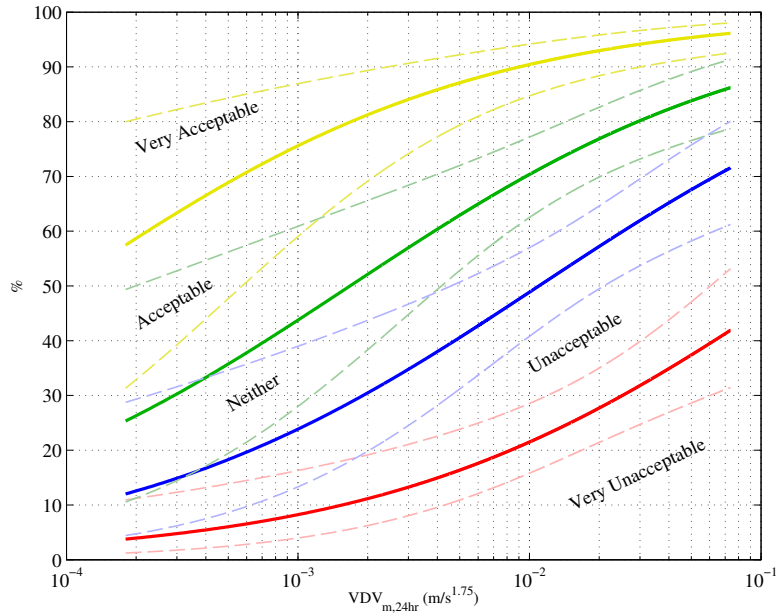


Figure 5: *Exposure-Response curves showing the probability of people finding the vibration either very acceptable, acceptable, neither acceptable nor unacceptable unacceptable or very unacceptable.*

other explanation considers how acceptability is judged compared to annoyance.

In the model proposed, individuals decide how annoyed they are in response to vibration by considering the vibration alone, regardless of other factors.

315 While it has been shown that many other factors actually influence the exposure-annoyance relationship (Peris et al., 2014; Wong-McSweeney et al., 2016 Forthcoming), the respondent is perhaps only focussed on the vibration. For *concern* the respondent may take into account factors that affect the potential damage to their property (vibration magnitude, strength/age of building, risk of shaking to
 320 fragile objects) but are still focussed on the vibration. For acceptability on the other hand, the respondent may consider a far wider range of factors balancing the negatives of living with the vibration (annoyance, damage...) against the potential positives of the construction site's outcome, i.e. a nearby convenient transport link.

325 By having these other factors involved it makes sense that there is a broader
spread of responses for acceptability and concern than for annoyance. This
means that as a response measure in itself annoyance gauges people's reactions
more precisely and comparisons between sites can be made with more certainty.
However to understand how much of a problem the vibration from a construc-
330 tion site will be for local residents, the fact that acceptability encompasses a
judgement balancing the positives and negatives may be an advantage.

Aims of further work are to improve the well-being of people living in the
vicinity of railway developments as well as to facilitate the mobility of the people
through railway systems. On one side, construction or upgrade of railways can
335 generate problems such as deprivation of landscape and well-being within the
communities located in the vicinity of such infrastructure. Reducing annoyance
and related responses due to railway noise and vibration using community ori-
entated measures will support the quality of urban environments. On the other
hand, the enhancement of the railway achieved by using community orientated
340 solutions would improve the mobility of the population and ensure the capacity
growth of the railway network.

The expectation of future vibration or noise from the line under construc-
tion is not specifically considered in this study. Expectation could play a role
in annoyance by the construction vibration, but an even more important role in
345 the acceptability of it. For example, if it is expected that the LRT will reduce
vibration and noise in the long term, then the short-term negative effects could
be expected to balance with the long-term benefits. Acceptability may represent
a long-term judgement of construction vibration, while annoyance encompass
only current factors. Other non-acoustical factors involved in the levels of an-
350 noyance reported by residents exposed to vibration near to LRT construction
site are examined by Wong-McSweeney et al. (2016 Forthcoming). Important
factors assessed include: whether the resident has ownership of the property;
self reported sensitivity to vibration, expectations of future levels of vibration;
the visibility of the construction site and the age of the respondents.

355 There is a significant knowledge gap on how measures directed to manage

acceptability might be more cost-effective than physical interventions alone. Further work might therefore be directed towards the development of guidance on management of annoyance and related behaviours such as acceptability. The guidance could give knowledge about expected outcomes when applying the various mitigation measures and describe the limits of its applications. These
360 outcomes are likely to be economic and this means that it is essential for industry to partner on such work. Likewise outcomes might be societal, so policy makers and planners too need to be key participants.

5. Conclusions

365 It was found that annoyance is the most sensitive response to different vibration exposures with thresholds closer together than either *concern* or acceptability. The confidence intervals for annoyance were also smaller suggesting a stronger relationship. The Cox and Snell pseudo R^2 was also greatest for annoyance which indicates that more of the variability in the response can be
370 attributed to the vibration, however for none of the three is the value very high.

It is suggested that the greater spread of both *concern* and acceptability are due to the multiple considerations taken into account by residents when judging these compared to annoyance. Even though evidence has been presented by others that external factors do influence the exposure-annoyance relationship
375 these are not as explicit in the judgement of annoyance as in the judgement of acceptability.

For *concern* residents may weigh up what they know of the vibration and the property before deciding how concerned they are. Likewise for acceptability residents may balance the negatives of disruption, nuisance and annoyance
380 against the positives of what they stand to gain from the construction, such as a convenient transport link.

Key objectives of further investigations should be to identify the benefits of the different self-reported measures for assessing the human response to environmental vibration in terms of improved community response and economic cost.

385 Of particular interest are gaps regarding possible measures and interventions,
accompanying costs, benefits of avoided effects, determinants of acceptance,
influence of other personal and contextual aspects including policy and gover-
nance, and communication. This requires a multidisciplinary approach that will
bring together experts on modelling and mitigating vibration, as well as experts
390 on human response, including annoyance, sleep disturbance and health effects.
Standardisation, establishing and sharing high quality databases, and the har-
monisation of methods, which so far is much more advanced in the noise field,
would likewise enable significant progression in the innovative management of
vibration.

395 **Acknowledgements**

This research was co-funded by Department for Environment and Rural Affairs (Defra) U.K. under grant agreement number NANR209 and the MAPFRE Foundation.

References

400 **Standards**

BS 5228-2:2009, Code of practice for noise and vibration control on construction and open sites Part 2: Vibration

BS 6472-1:2008, Guide to evaluation of human exposure to vibration in buildings Part 1: Vibration sources other than blasting

405 **ISO 2631-2:2003**, Mechanical vibration and shock - Evaluation of human exposure to whole-body vibration - Part 2: Vibration in buildings (1 Hz to 80 Hz)

ISO 15666:2003, Acoustics - Assessment of noise annoyance by means of social and socio-acoustic surveys

Bauer, M., Collin, D., Iemma, U., Janssens, K., Márki, F., Muller, U., 2010.

410 Cosma-community oriented solutions to minimise aircraft noise annoyance, in: INTER-NOISE and NOISE-CON Congress and Conference Proceedings, Institute of Noise Control Engineering. pp. 4126–4135.

Devine-Wright, P., 2007. Reconsidering public attitudes and public acceptance of renewable energy technologies: a critical review. Manchester: School

415 of Environment and Development, University of Manchester. Available at: http://www.sed.manchester.ac.uk/research/beyond_nimbyism .

Grisolía, J.M., López, F., de Dios Ortúzar, J., 2015. Increasing the acceptability of a congestion charging scheme. *Transport Policy* 39, 37–47.

Guski, R., Felscher-Suhr, U., Schuemer, R., 1999. The concept of noise annoyance: How international experts see it. *Journal of Sound and Vibration* 223, 420 513 – 527.

- Huijts, N., Molin, E., Steg, L., 2012. Psychological factors influencing sustainable energy technology acceptance: A review-based comprehensive framework. *Renewable and Sustainable Energy Reviews* 16, 525–531.
- 425 Janssen, S., Coelho, B.Z., Koopman, A., Peris, E., Groll, W., Wisniewska, K., 2015. Annoyance due to vibration from freight railway lines in the netherlands and poland, in: *Proceedings 10th European Congress and Exposition on Noise Control Engineering, EuroNoise*, pp. 595–598.
- 430 Klæboe, R., Turunen-Rise, I., Hårvik, L., Madshus, C., 2003. Vibration in dwellings from road and rail traffic—part ii: exposure–effect relationships based on ordinal logit and logistic regression models. *Applied Acoustics* 64, 89–109.
- Leverton, J., Pike, A., 2007. Helicopter noise - what is important from a community prospective?, in: *Annual Forum Proceedings - American Helicopter Society, American Helicopter Society, Inc.*. p. 1.
- 435
- Peris, E., Woodcock, J.S., Sica, G., Sharp, C., Moorhouse, A.T., Waddington, D.C., 2014. Effect of situational, attitudinal and demographic factors on railway vibration annoyance in residential areas. *The Journal of the Acoustical Society of America* 135, 194–204.
- 440 Pridmore, A., Miola, A., 2011. Public acceptability of sustainable transport measures, a review of the literature, *International Transport Forum, European Commission Joint Research Centre. OECD Publishing.*
- Sharp, C., Woodcock, J.S., Sica, G., Peris, E., Moorhouse, A.T., Waddington, D.C., 2014. Exposure-response relationships for annoyance due to freight and passenger railway vibration exposure in residential environments. *The Journal of the Acoustical Society of America* 135, 205–212.
- 445
- Sica, G., Peris, E., Woodcock, J.S., Moorhouse, A.T., Waddington, D.C., 2014. Design of measurement methodology for the evaluation of human exposure to

- vibration in residential environments. *Science of the Total Environment* 482,
450 461–471.
- Toke, D., 2003. Wind power in the uk: How planning conditions and financial arrangements affect outcomes. *International Journal of Sustainable Energy* 23, 207–216.
- Upham, P., Oltra, C., Boso, À., 2015. Towards a cross-paradigmatic framework
455 of the social acceptance of energy systems. *Energy Research & Social Science* 8, 100–112.
- Waddington, D.C., Moorhouse, A.T., Steele, A., Woodcock, J.S., Condie, J., Peris, E., Sica, G., Koziel, Z., 2011. Human response to vibration in residential environments (NANR209), final project report. ,
460 <http://usir.salford.ac.uk/18583/>.
- Waddington, D.C., Woodcock, J.S., Peris, E., Condie, J., Sica, G., Moorhouse, A.T., Steele, A., 2014. Human response to vibration in residential environments. *The Journal of the Acoustical Society of America* 135, 182–193
<http://usir.salford.ac.uk/33652/>.
- 465 Wong-McSweeney, D., Woodcock, J.S., Waddington, D.C., Peris, E., Moorhouse, A.T., Redel-Macias, M.D., 2016 Forthcoming. Effect of attitudinal, situation and demographic factors on annoyance due to environmental vibration from construction of a light rapid transit system. *IJERPH* .
- Woodcock, J.S., Peris, E., Condie, J., Sica, G., Koziel, Z., Evans, T., Moorhouse, A.T., Steele, A., Waddington, D.C., 2011a. Human response to vibration
470 in residential environments (NANR209), Technical report 6: determination of exposure–response relationships. Technical Report. University of Salford
<http://usir.salford.ac.uk/23386/>.
- Woodcock, J.S., Peris, E., Sica, G., Koziel, Z., Moorhouse, A.T., Waddington, D.C., 2011b. Human response to vibration in residential environments: Es-
475

tablishing exposure-response relationships, in: 10th International Congress on Noise as a Public Health Problem, ICBEN <http://usir.salford.ac.uk/19134/>.

Woodcock, J.S., Sica, G., Peris, E., Sharp, C., T., M.A., Waddington, D.C., 2015 under review. Quantification of the effects of audible rattle and source type on the human response to environmental vibration. Journal of Acoustic Society of America .

Woods, R.D., 1997. Dynamic effects of pile installations on adjacent structures. volume 253. Transportation Research Board.